

Target Simulation W. Bo (Mar 12, 2009)

(1) Elliptic jet

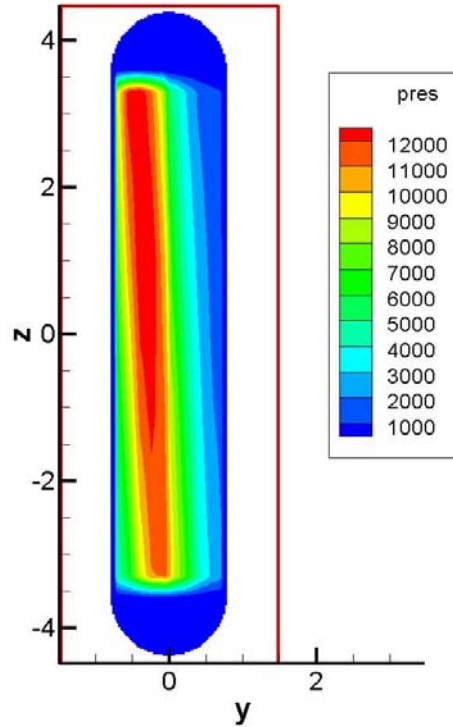
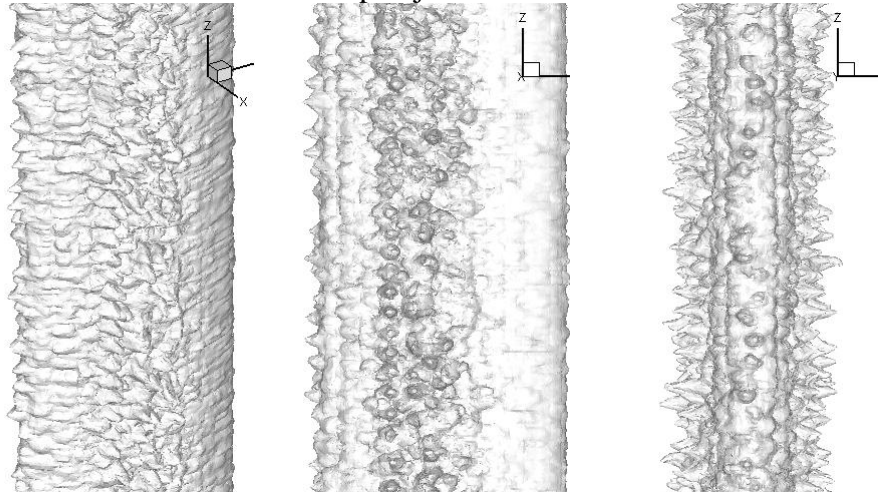
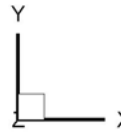
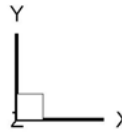


Fig1. Energy deposition in a elliptic jet

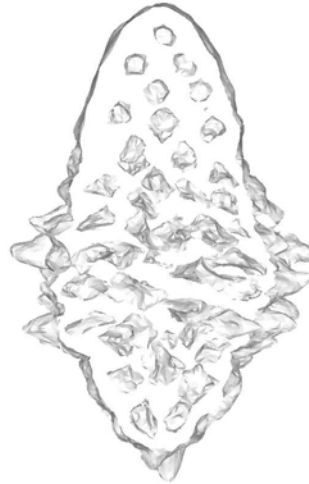
Here are the 3 different views for the elliptic jet at 120 microsecond.



Jet surface at different z cut planes.



$z = -1.9\text{cm}$



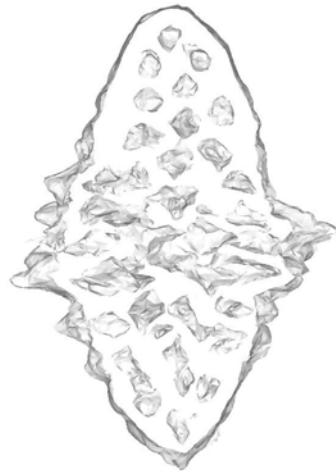
$z = -2.9\text{cm}$



$z = 0$



$z = 2.9\text{cm}$



$z = 1.9\text{cm}$

(2) Circular jet with reduced density

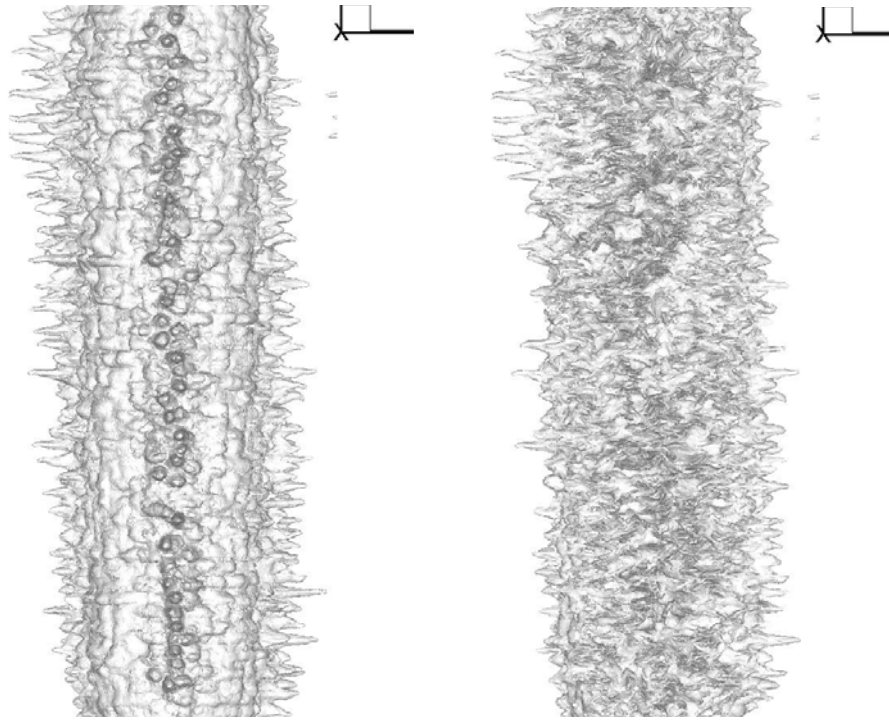
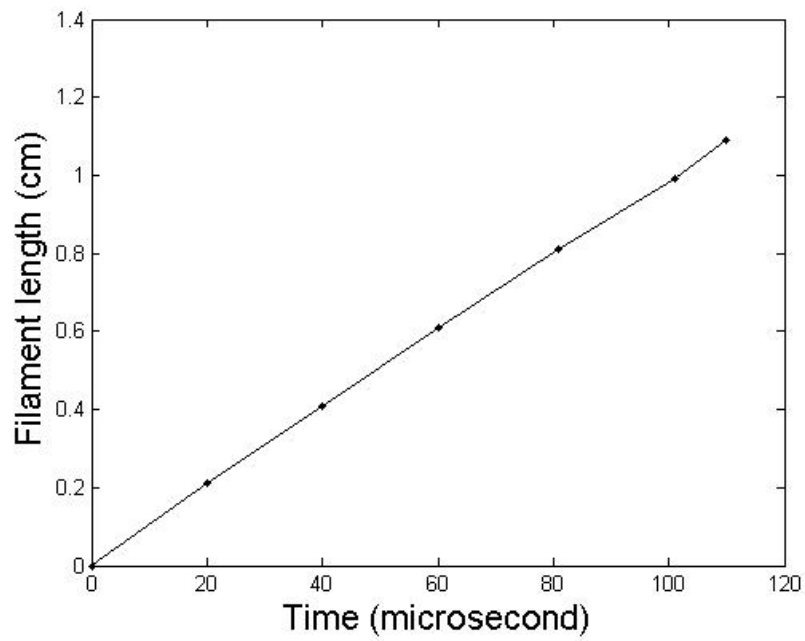


Fig 2.The jet surface and its interior at $t = 120$ microsecond.



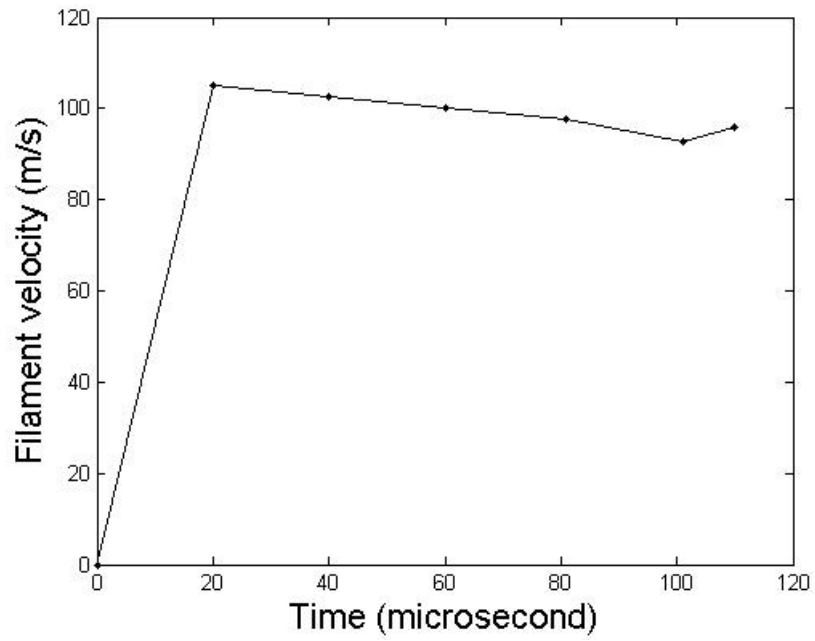


Fig3 Growth of filaments for circular jet with reduced density.

(3) Effect of magnetic field

The test problem without bubble insertion shows the stability effect of magnetic field.

See the following figs

