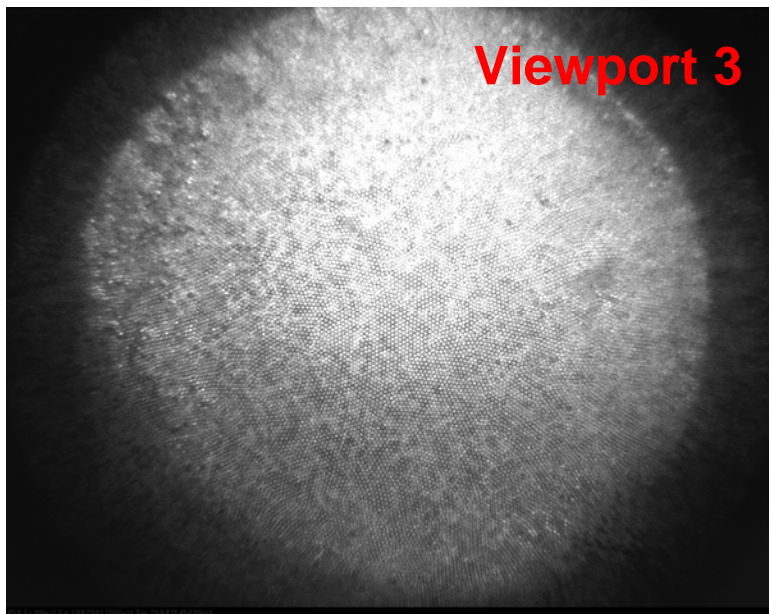
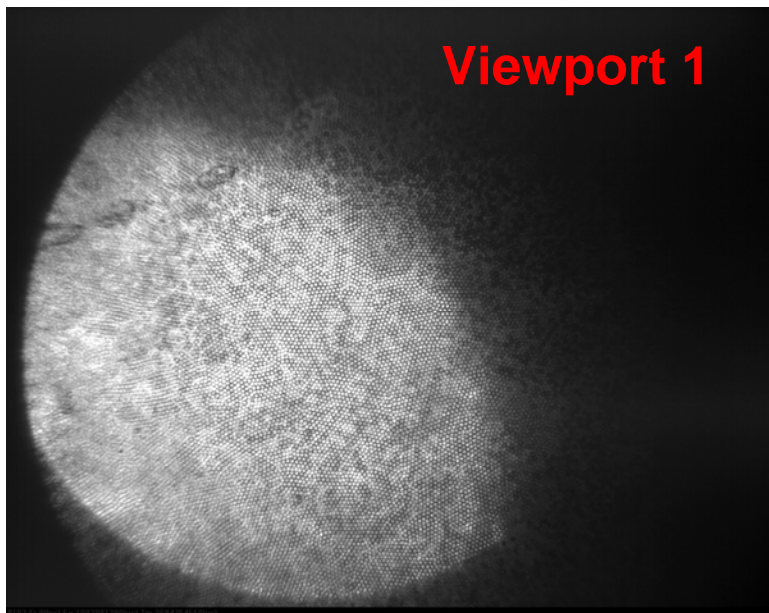


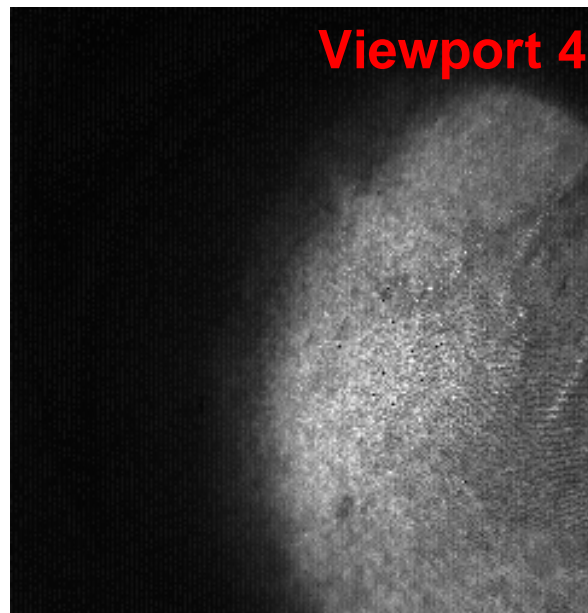
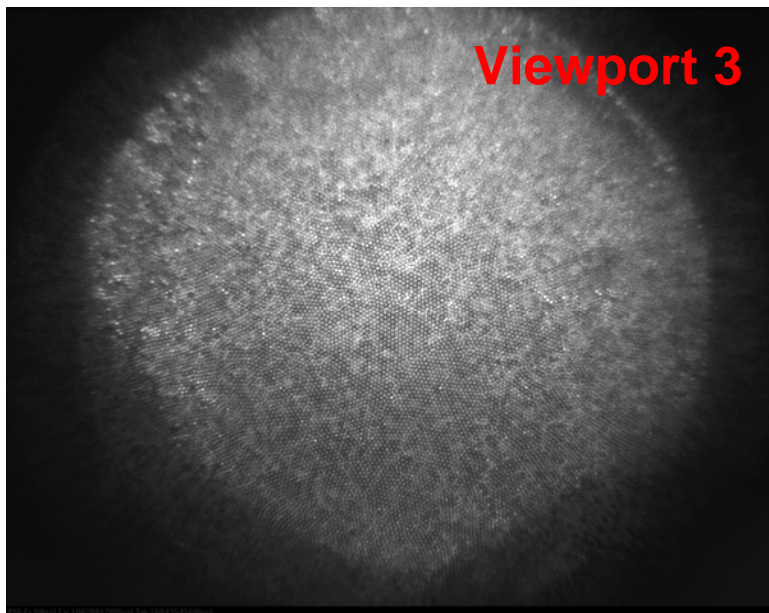
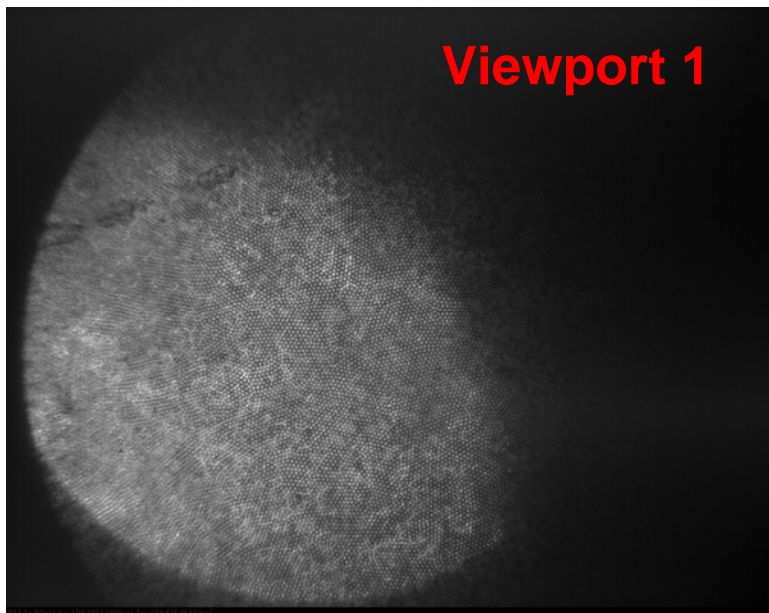
Oct 3, 2007 14:30 ~24 hrs after cooling soleniod

Temperature (°C) on HPU display
Primary : 19
Secondary : 16



Oct 3, 2007 20:14 ~30 hrs after cooling soleniod

Temperature (°C) on HPU display
Primary : 8
Secondary : 14



Oct 4, 2007 13:30 TT2 tunnel access

0.5 hour TT2 tunnel access to replace secondary power supply from (70V, 1 A) limit to (150V, 6 A limit)

Primary heater

Primary: was set @ 12 V, 2.5 A



Set: current limited @ 3 A,
voltage is @ 15 V

Secondary heater

Secondary was set @ 71.8 V, 0.9 A

Secondary heater resistance measured: 79 Ohm



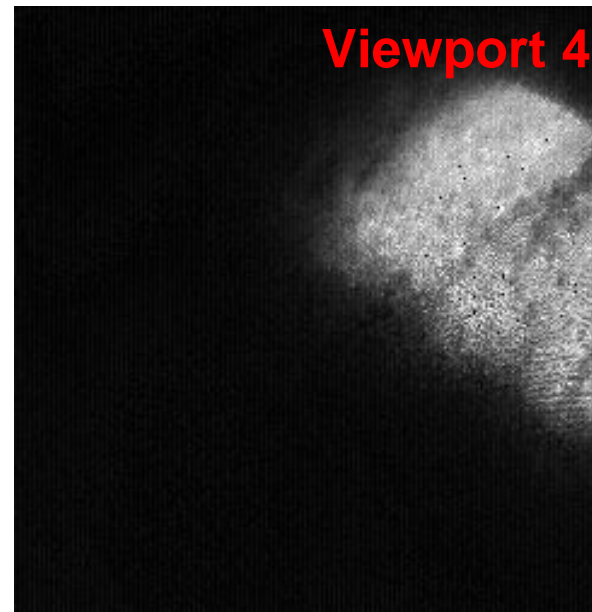
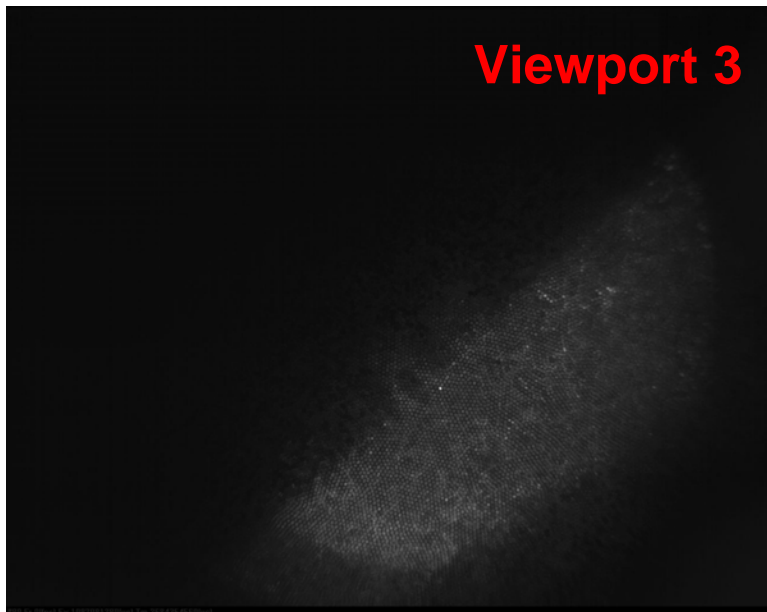
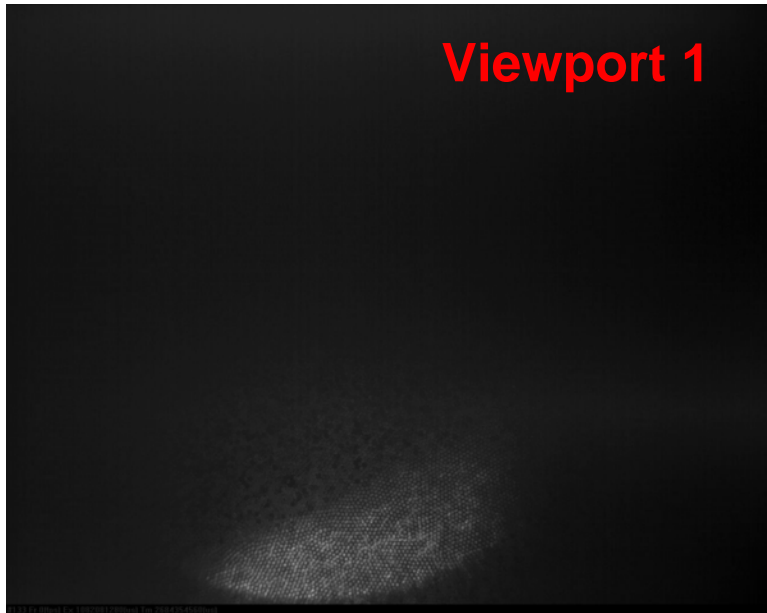
Set: current limited @ 1.5 A,
voltage is @ 110 V

Temperature log

CERN Merit																
Manual Log of temperature readout from Cryogenic, Mercury system, and Optics																
Date & time	Cryogenic (degree K)				Mercury system (degree C)								Optics (degree C)			
	TT301C	TT302C	TT303C	TT304C	Sump tan	hyd fluid	Cy. Inlet	sec. Air	D.Pri Win	D Bore ai	U bore ai	Nozzle F	Primary set point	Secondary set point		
10/2/2007 21:00	278	240	258	249	21.5	30.2	23	23.3	29.1	30.6	39.5	33.2	32	35 C, 15V	19	20 C, 70 V
10/3/2007 14:30	231.6	171.1	209.6	184	21.1	29.9	22.7	23	22.5	24.4	30.6	24.1	22	35 C, 15V	16	20 C, 70 V
10/3/2007 15:56	224.1	163.4	194.1	172.9	21.1	29.9	22.7	22.9	21	22.9	28	22	19	35 C, 15V	16	20 C, 70 V
10/3/2007 20:14	204.1	143.2	186.2	156	20.9	29.8	22.2	22.9	16.2	17.6	17.9	13.4	8	35 C, 15V	14	20 C, 70 V
10/4/2007 10:10	151	100.7	143.5	114.4	20.2	27.7	20.1	22.8	7.9	8.7	-14.3	-15.2	-25	35 C, 15V	13	20 C, 70 V
10/4/2007 12:30	145	98.6	139.2	111.6	20.2	27.6	20	22.8	7.3	8	-18.5	-19.1	-30	35 C, 15V	13	20 C, 70 V
10/4/2007 14:00 *	141	97.2	136	110	20.1	27.2	20	22.7	10	10.3	-14.7	-15.4	-23	35 C, 18V	14	30 C, 110V
* 0.5 hrs tunnel access to replace secondary power supply on 10/4/2007 @ 13:30																

Oct 4, 2007 10:10 before TT2 tunnel access

Temperature (°C) on HPU display
Primary : -30
Secondary : 13



**Oct 4, 2007 14:00 after 0.5 hrs TT2 tunnel access
to replace secondary heater power supply**

Temperature (°C) on HPU display
Primary : -23
Secondary : 14

