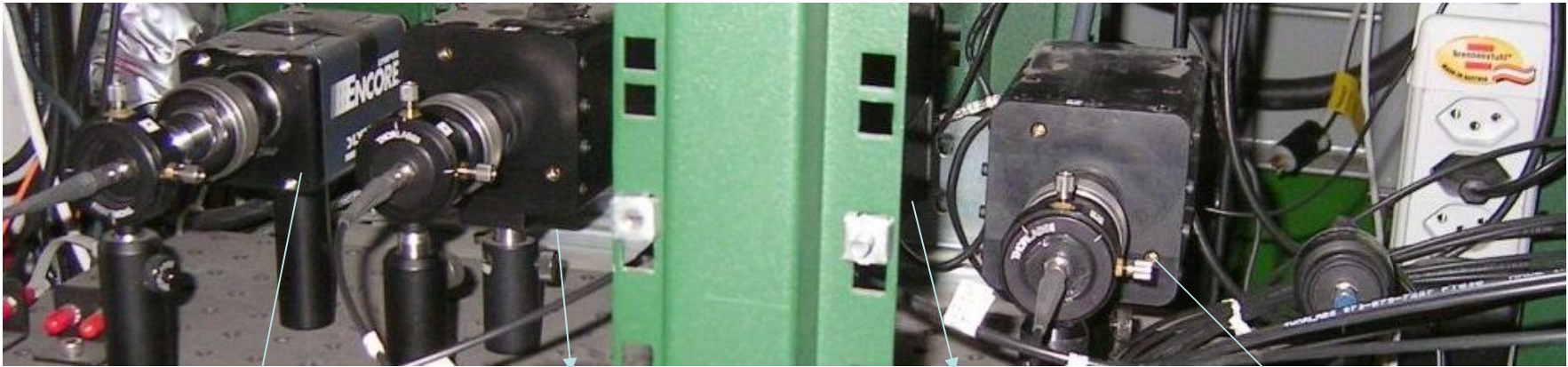


Nov 8, 2007 camera lens replaced to give 2000 fps with reduced image resolution

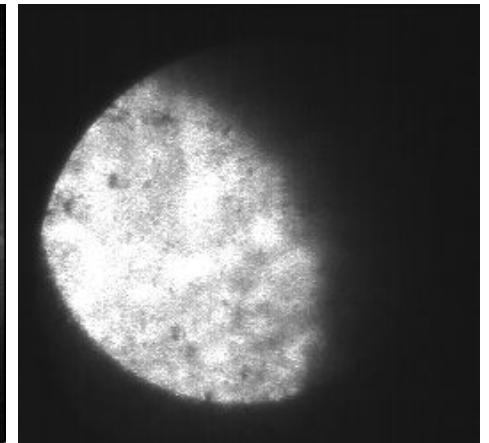
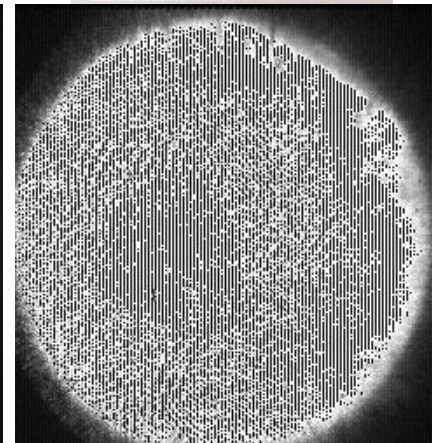
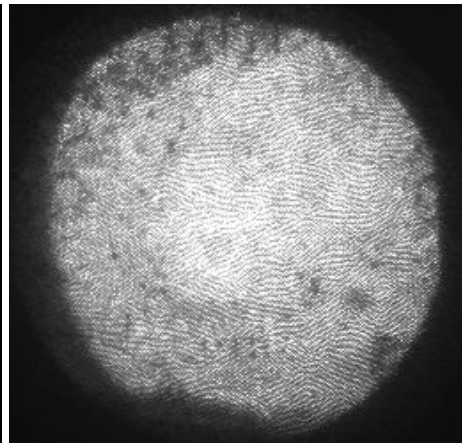
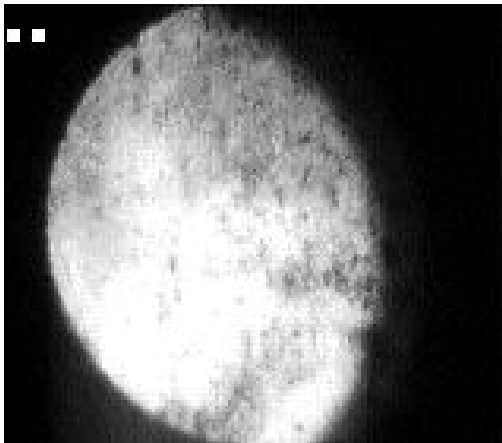
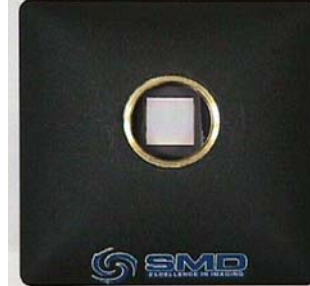


Viewport 4, Olympus
0.5 ms frame rate
33 μ s exposure
160x140 pixels

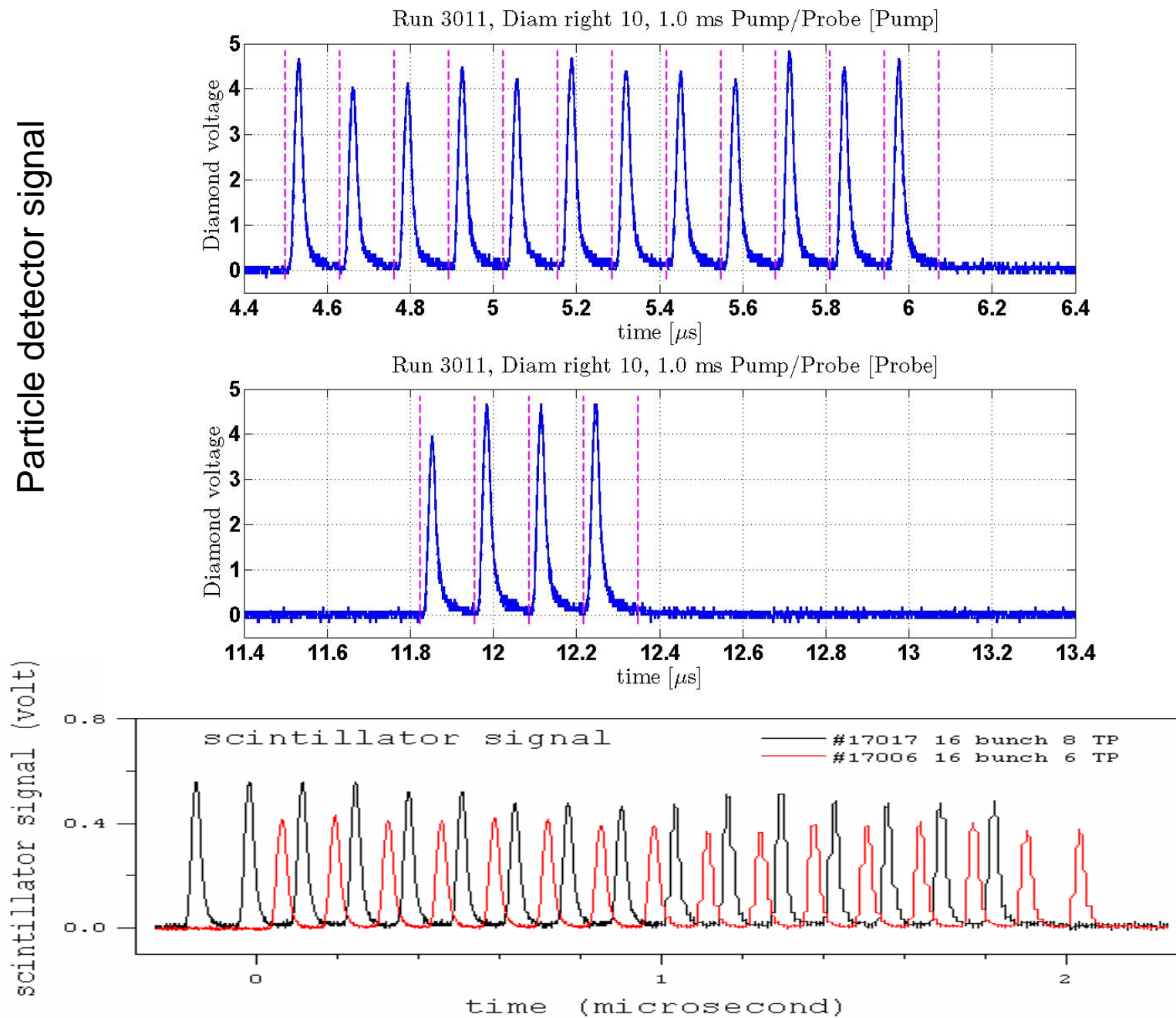
Viewport 3, FV Camera
0.5 ms frame rate
6 μ s exposure
260x250 pixels

Viewport 2, SMD Camera
0.5 ms frame rate
0.15 μ s exposure
245x252 pixels

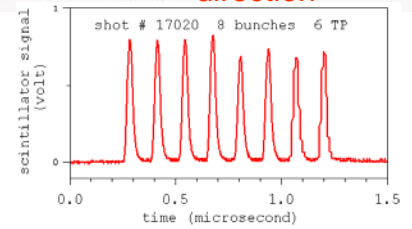
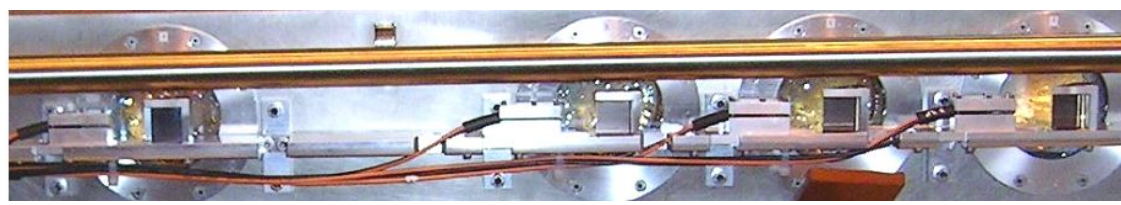
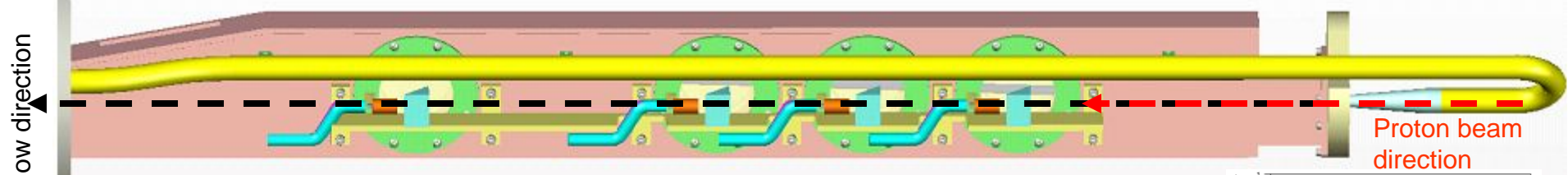
Viewport 1, FV Camera
0.5 ms frame rate
6 μ s exposure
260x250 pixels



A 3TP Pump Pulse and a 1TP Probe Pulse with 1ms delay



Nov 8-11, 2007 CERN proton beam run, all camera @ 2000 fps



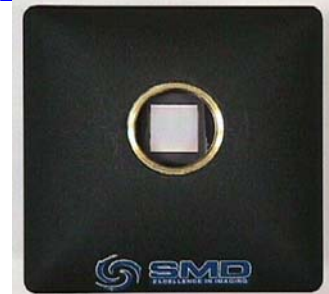
Viewport 4, Olympus
33 μ s exposure
160x140 pixels



Viewport 3, FV Camera
6 μ s exposure
260x250 pixels



Viewport 2, SMD Camera
0.15 μ s exposure
245x252 pixels



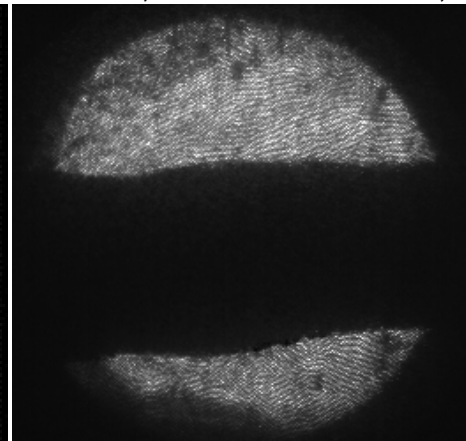
Viewport 1, FV Camera
6 μ s exposure
260x250 pixels



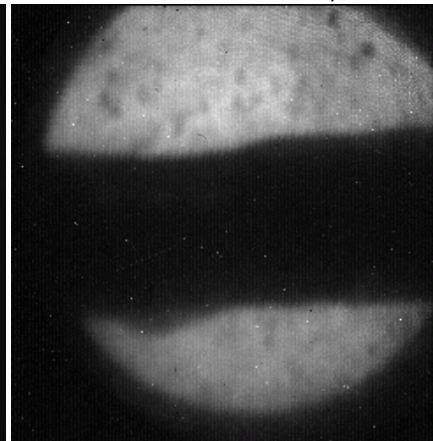
Nov. 11, 2007 Shot # 17020, 8 bunches 6 TP 7 Tesla, 15 m/s jet



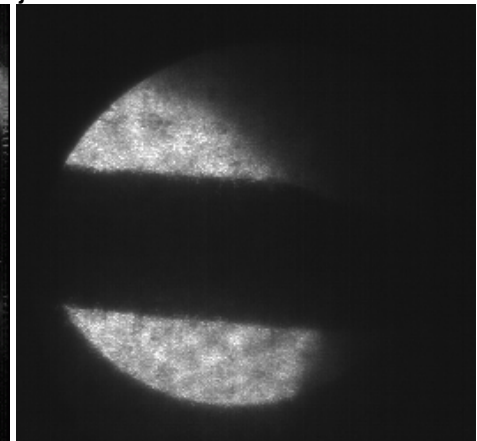
Movie 17020 vp4.gif



Movie 17020 vp3.gif

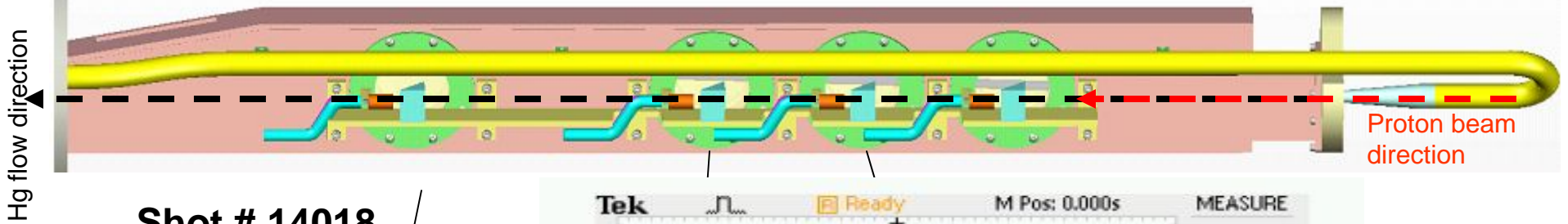


Movie 17020 vp2.gif



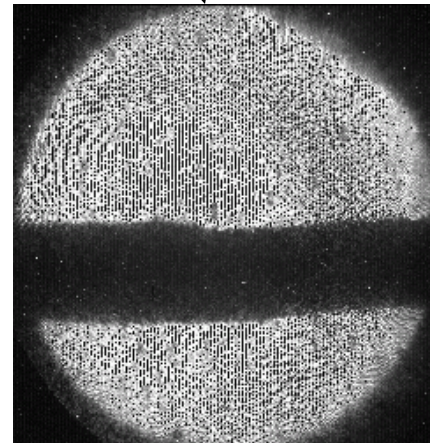
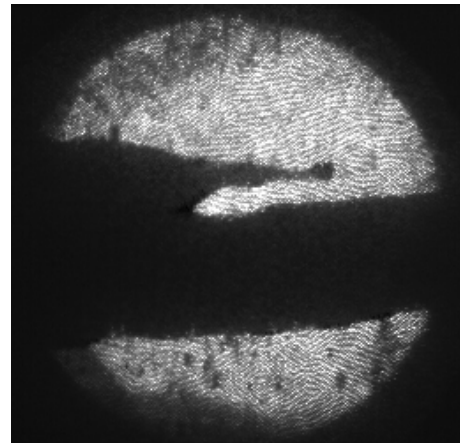
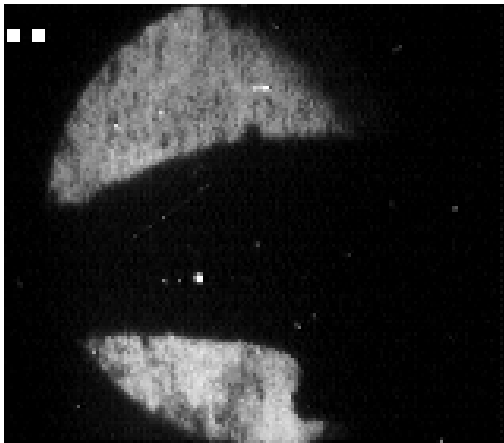
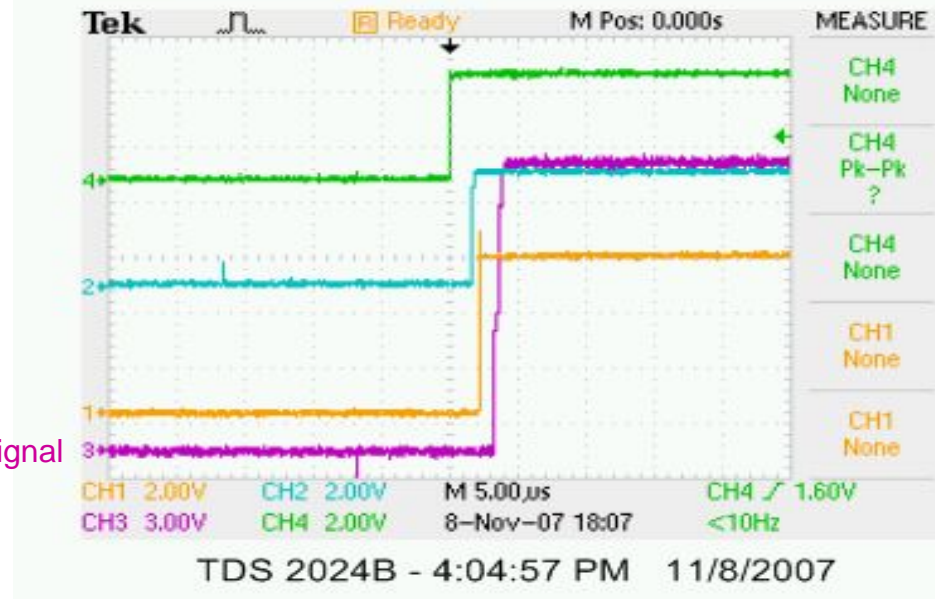
Movie 17020 vp1.gif

MORE CERN proton beam run @ @ 2000 fps

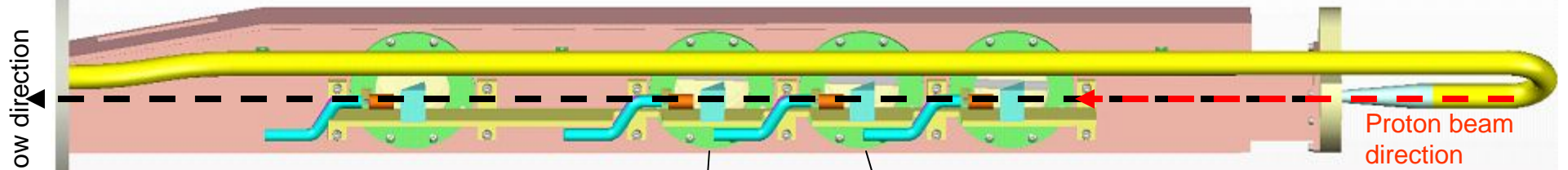


Shot # 14018
6+2 bunches
16 TP
5 Tesla
15 m/s jet

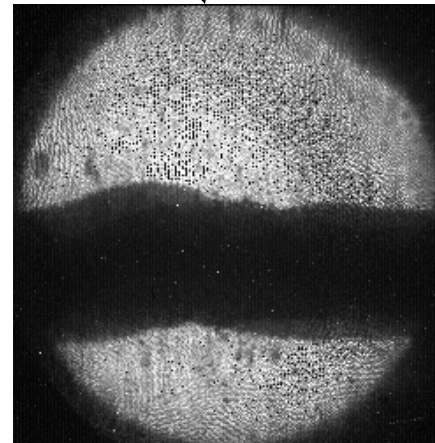
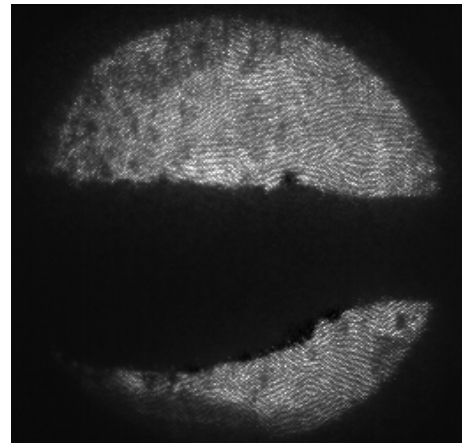
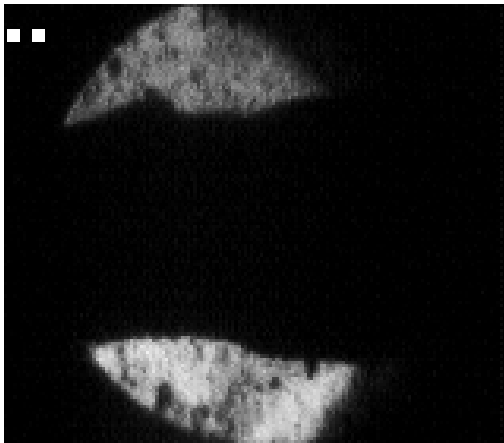
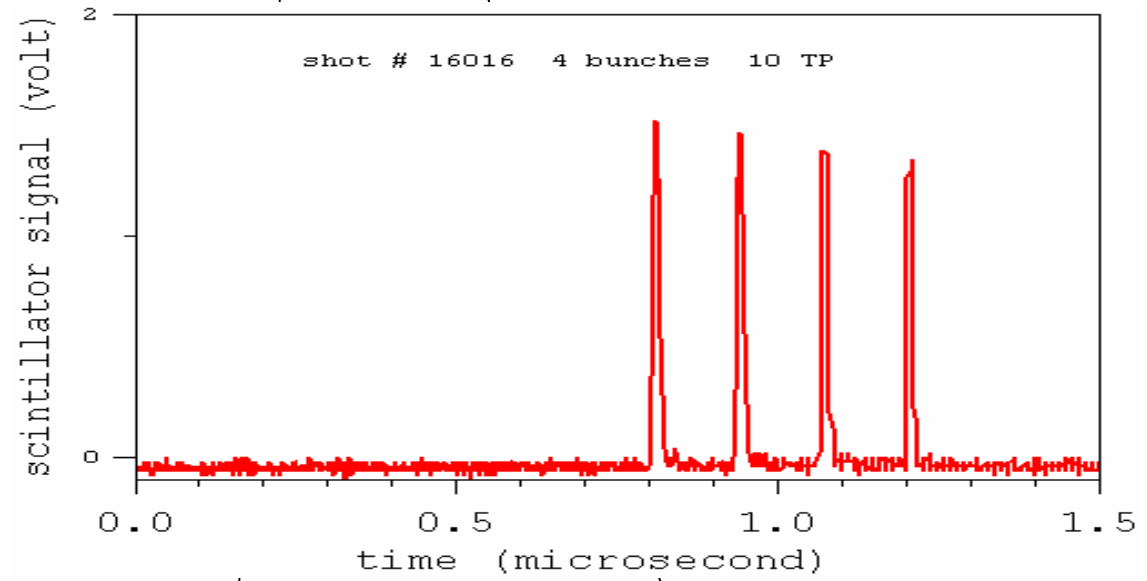
Scintillator signal



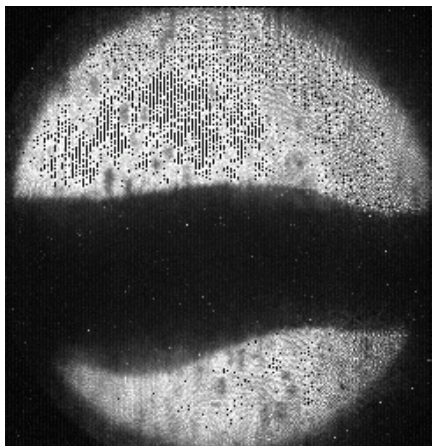
MORE CERN proton beam run @ @ 2000 fps



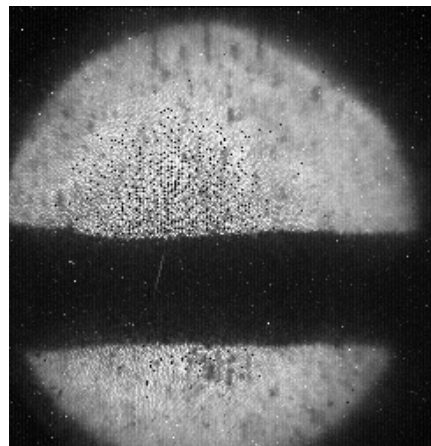
Shot # 16016
4 bunches
10 TP
5 Tesla
15 m/s jet



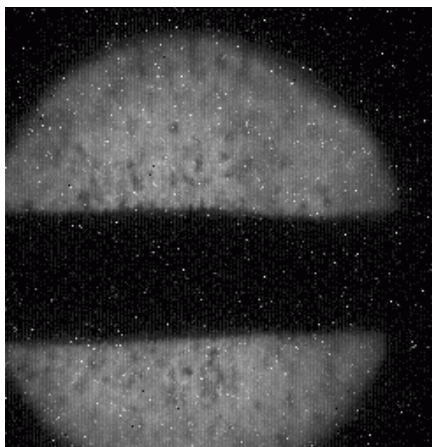
MORE CERN proton beam run, SMD Viewport #2



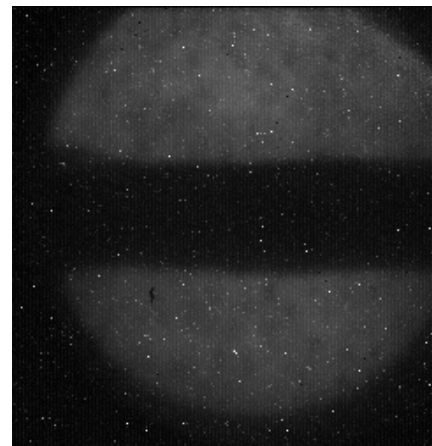
Shot # 6006
16 bunches
10 TP
5 Tesla
15 m/s jet
0.1 ms/frame



Shot # 11019
16 bunches
10 TP
10 Tesla
15 m/s jet
0.1 ms/frame



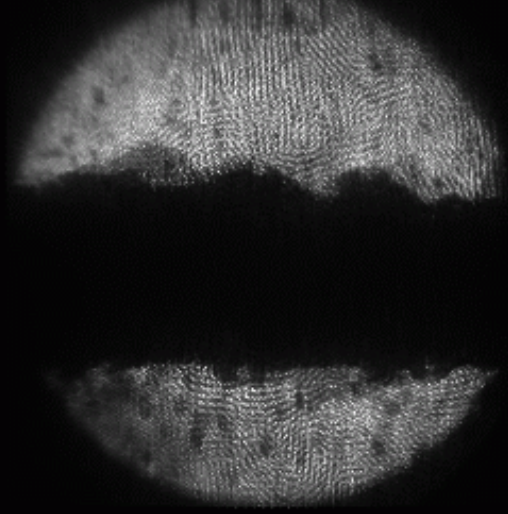
Shot # 12033
16 bunches
30 TP
15 Tesla
20 m/s jet
0.1 ms/frame



Shot # 17024
16 bunches
29 TP
10 Tesla
20 m/s jet
0.5 ms/frame

Merit Milestones

Feb 14, 2007 @ ORNL

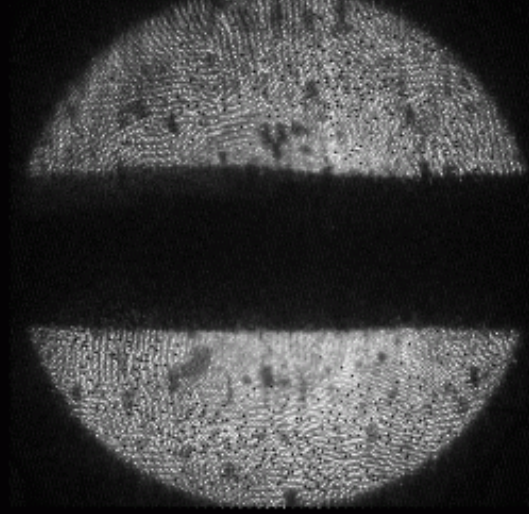


FOV 5.5 cm
50 μ s/frame
0.15 μ s exposure
Hg_20ms.gif

B=0

20 m/s jet

March 3, 2007 @ MIT

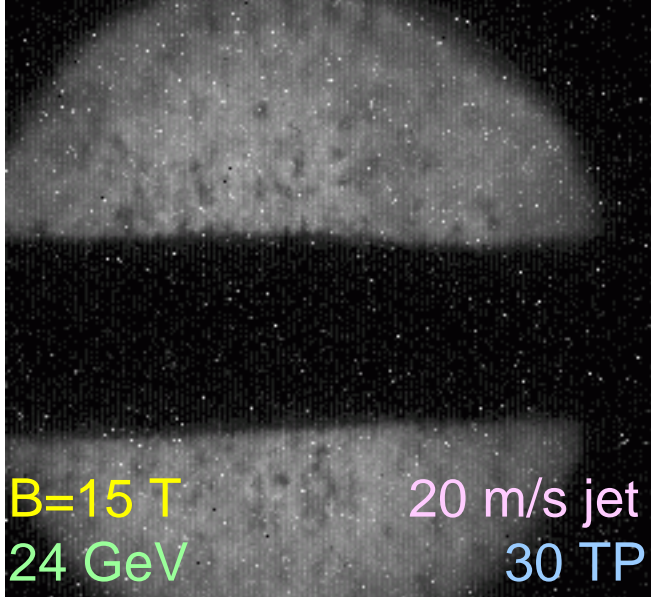


FOV 5.5 cm
100 μ s/frame
0.15 μ s exposure

B=10 T

20 m/s jet

Nov 6, 2007 @ CERN

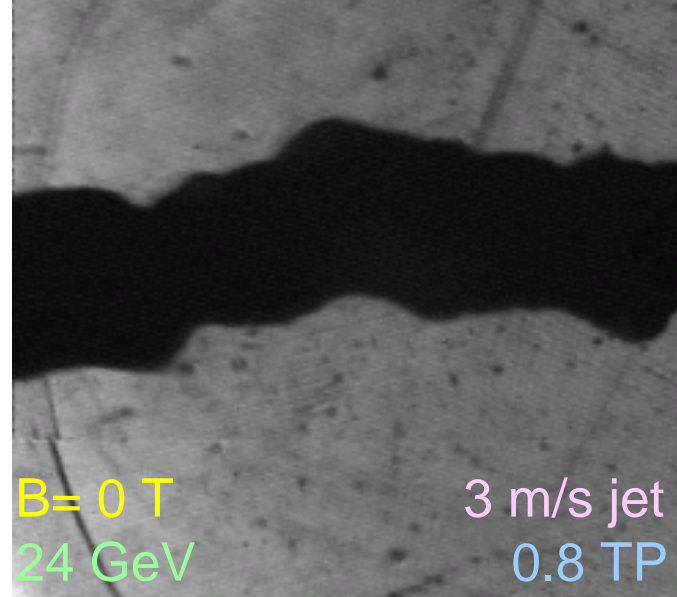


FOV 5.5 cm
100 μ s/frame
0.15 μ s exposure
shot # 12033
Movie12033vp2.gif

B=15 T
24 GeV

20 m/s jet
30 TP

April 27, 2001 @ BNL



FOV 4.2x4.2 cm
100 μ s/frame
0.15 μ s exposure
Jet 4-27-01-15.gif

B= 0 T
24 GeV

3 m/s jet
0.8 TP