

Some slides on UCLA LM-MHD capabilities

and

**Preliminary Incompressible LM Jet Simulations in
Muon Collider Fields**

Neil Morley and Manmeet Narula
Fusion Science and Technology Group, UCLA
<http://www.fusion.ucla.edu> , morley@fusion.ucla.edu

Nov 16, 2005

UCLA

HIMAG attributes in a nut-shell

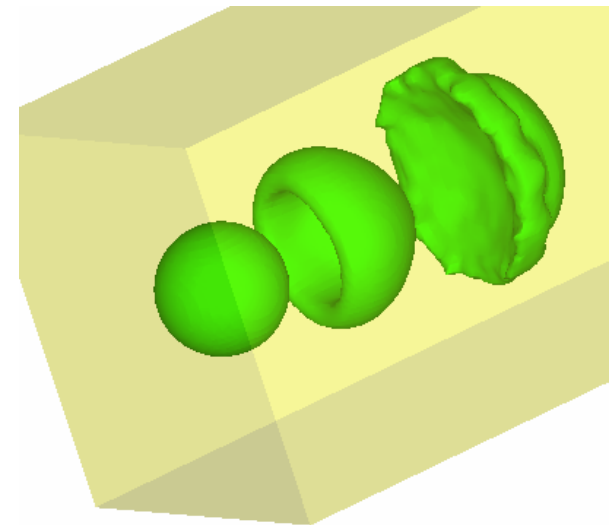
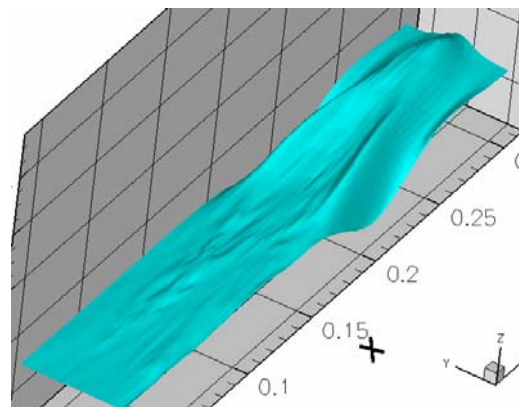
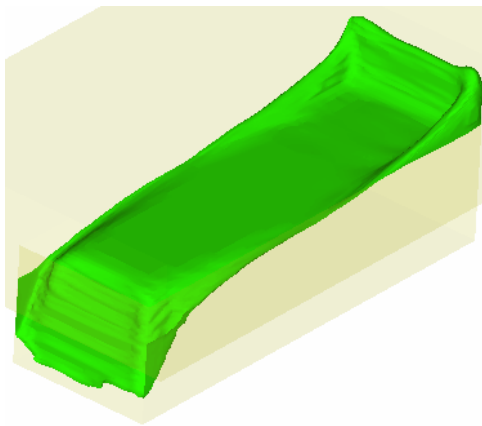
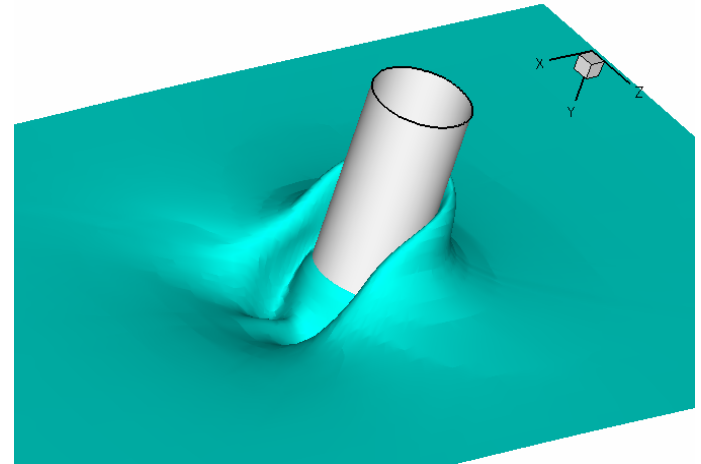
- HIMAG second order accurate, finite volume based Navier-Stokes solver on unstructured grids
 - including free surface with Level Set
 - electric potential and induction equation MHD models
- The code has been written for complex geometries and there is much flexibility in choosing a mesh: Hexahedral, Tetrahedral, Prismatic cells can be used.
- 2-D as well as 3-D flows can be simulated. A fully developed flow option has recently been created.
- The code is parallel. All problems can be run across parallel computers.
- Electromagnetics and flow physics are solved in a coupled manner. Two different formulations for electromagnetics are now available: phi and B.
- An arbitrary set of conducting walls maybe specified. Free surface flows are modeled using the Level Set method. **Multiple solid materials** can be simulated
- Graphical interfaces are available to assist users from problem setup to post-processing.
- A preliminary turbulence and heat transfer modeling capability now exists.

Free surface capture

HIMAG uses the Level Set method to capture free surfaces

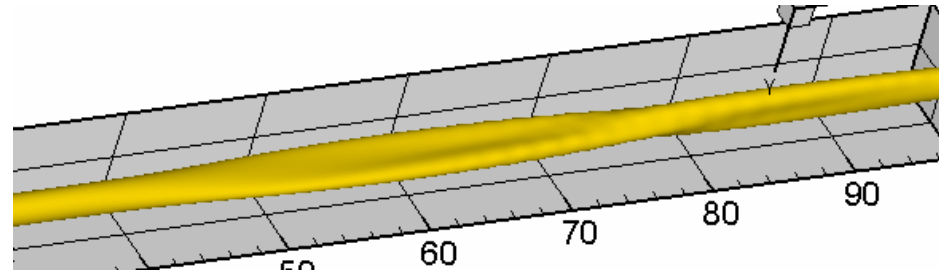
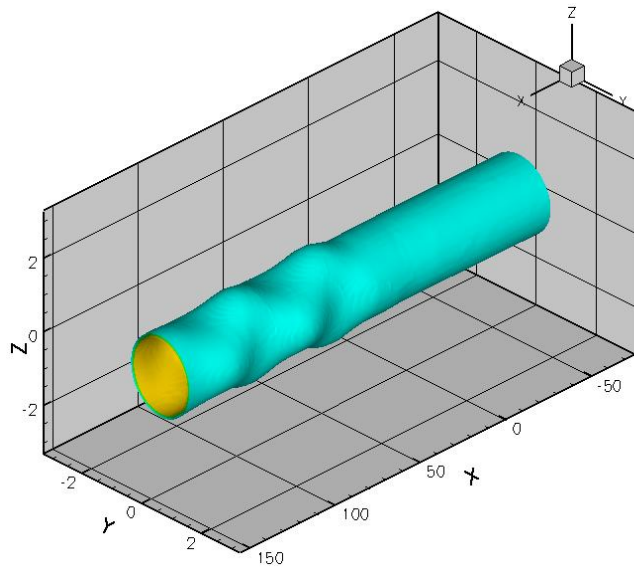
A higher order TVD procedure is used to enhance mass conservation and numerical stability

Examples of HIMAG simulations:



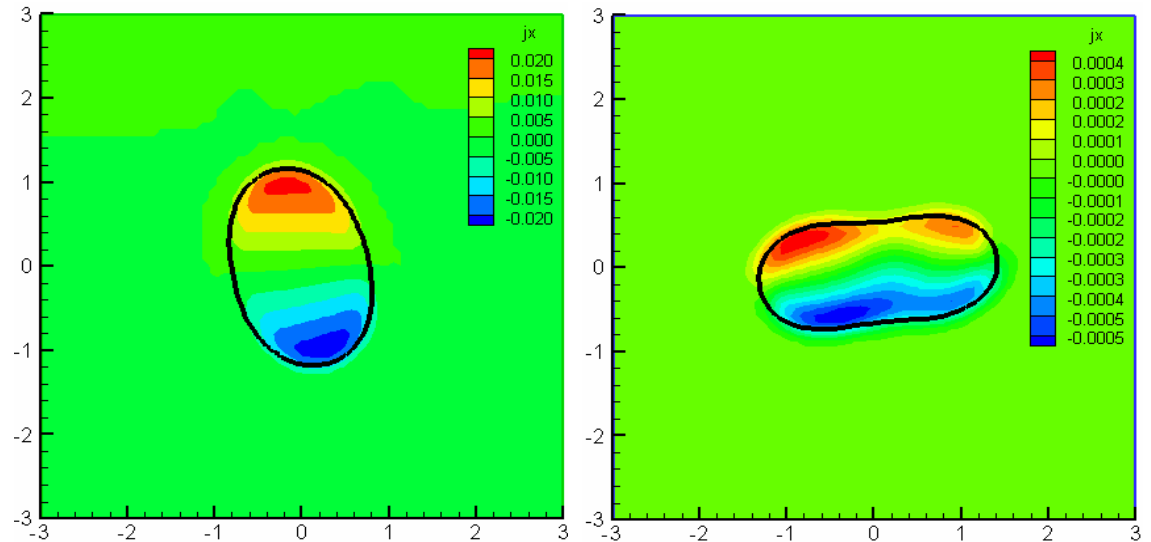
Jet flow under a 3-component applied B-field for fusion:

The warping of a liquid metal jet under a B-field with sharp spatial gradients is studied. The free surface can deform sizably.



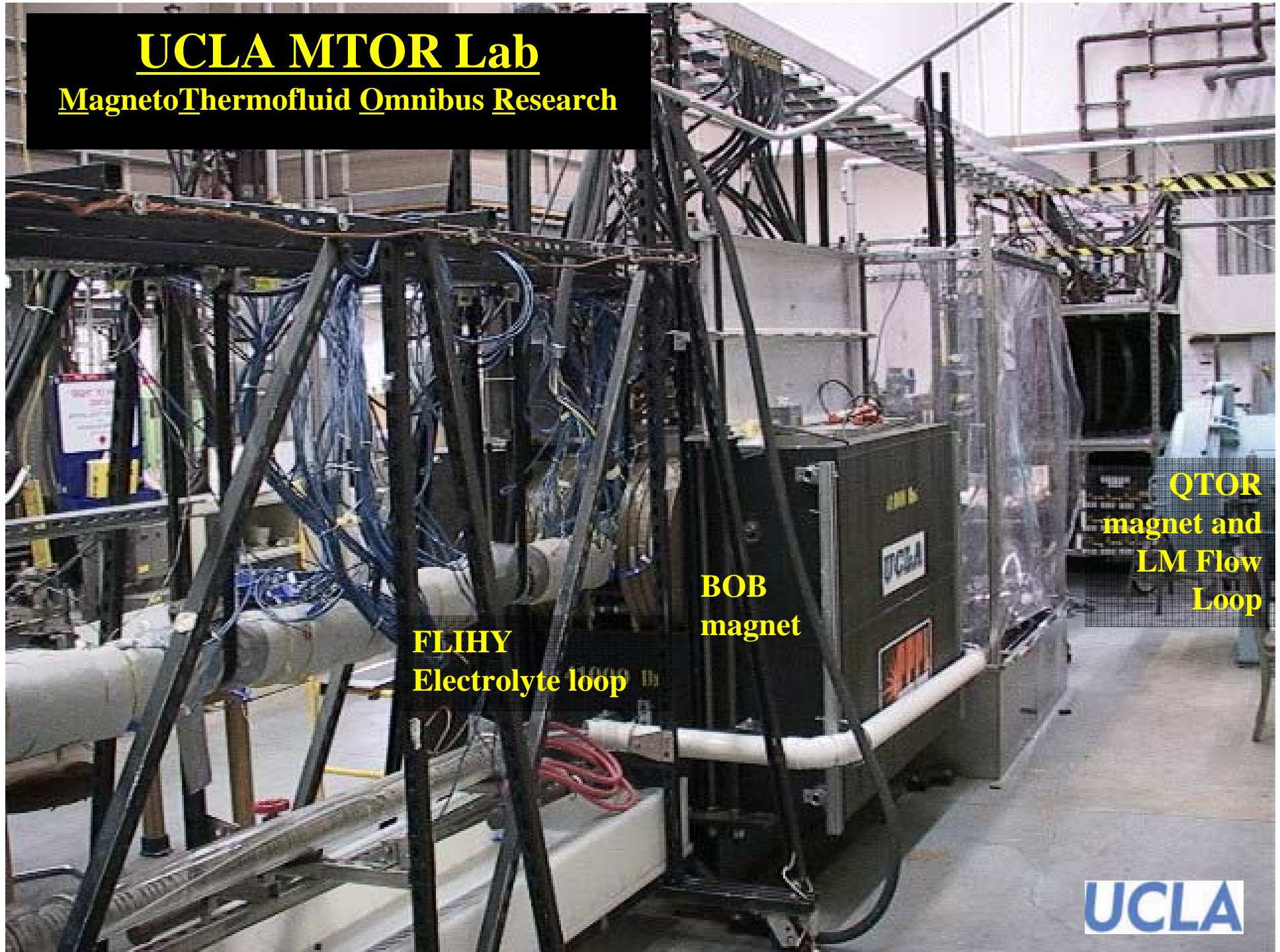
Jet at the real aspect ratio, and exaggerated aspect ratio on the left.

Right: Jet deformation and Axial current density at two cross sections



UCLA MTOR Lab

MagnetoThermofluid Omnibus Research



QTOR
magnet and
LM Flow
Loop

BOB
magnet

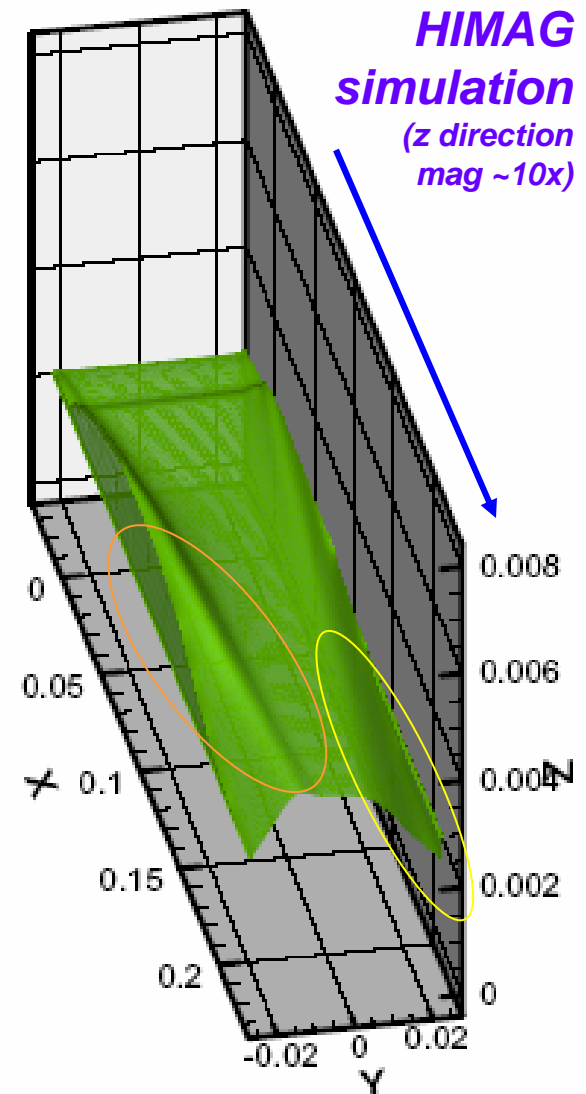
FLIHY
Electrolyte loop

UCLA

Experiments and Modeling of 3D MHD flows (both films & jets) show interesting free surface features

- ❑ Film flow example pictured: both numerical & experimental results show that the free surface height variation is **asymmetric** in span wise direction when both toroidal and normal field components are applied. Features like
 - ridge formation (orange ellipses) and
 - wall separation (yellow ellipses)are observed
- ❑ Drag is also significant and film height doubles in the first 20 cm

5 cm wide Ga-In-Sn flow in a “NSTX-like” scaled toroidal and poloidal field



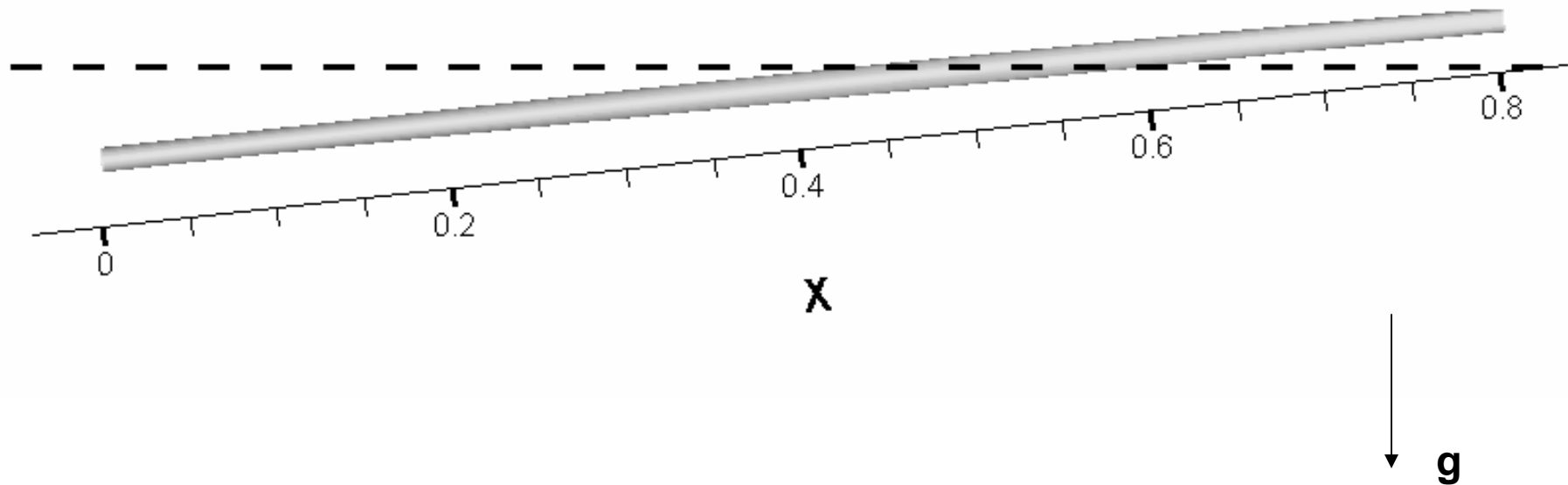
UCLA

Preliminary Muon Collider Simulation

Jet Parameters

- ❑ Horizontal solenoid with center at 0,0,0
- ❑ Field approximated as a single coil with the inner diameter 30 cm, outer diameter 40 cm, and length 100 cm. The total current is $7200 \times 78 \times 24 = 13478400$ A.
- ❑ Nozzle outlet at x (longitudinal) = -40 cm and y (vertical) = -4 cm
- ❑ Nozzle tilt is 0.1 rad in xy plane (pointing only slightly upwards but mostly horizontal)
- ❑ Nozzle outlet radius is 5 mm
- ❑ Nozzle is not simulated, idealized inlet boundary conditions used with no MHD forces for first 5 cm.
- ❑ Jet initial average velocity is 25 m/s
- ❑ Mesh is uniform 50x50x200, space is 4x4x80 cm

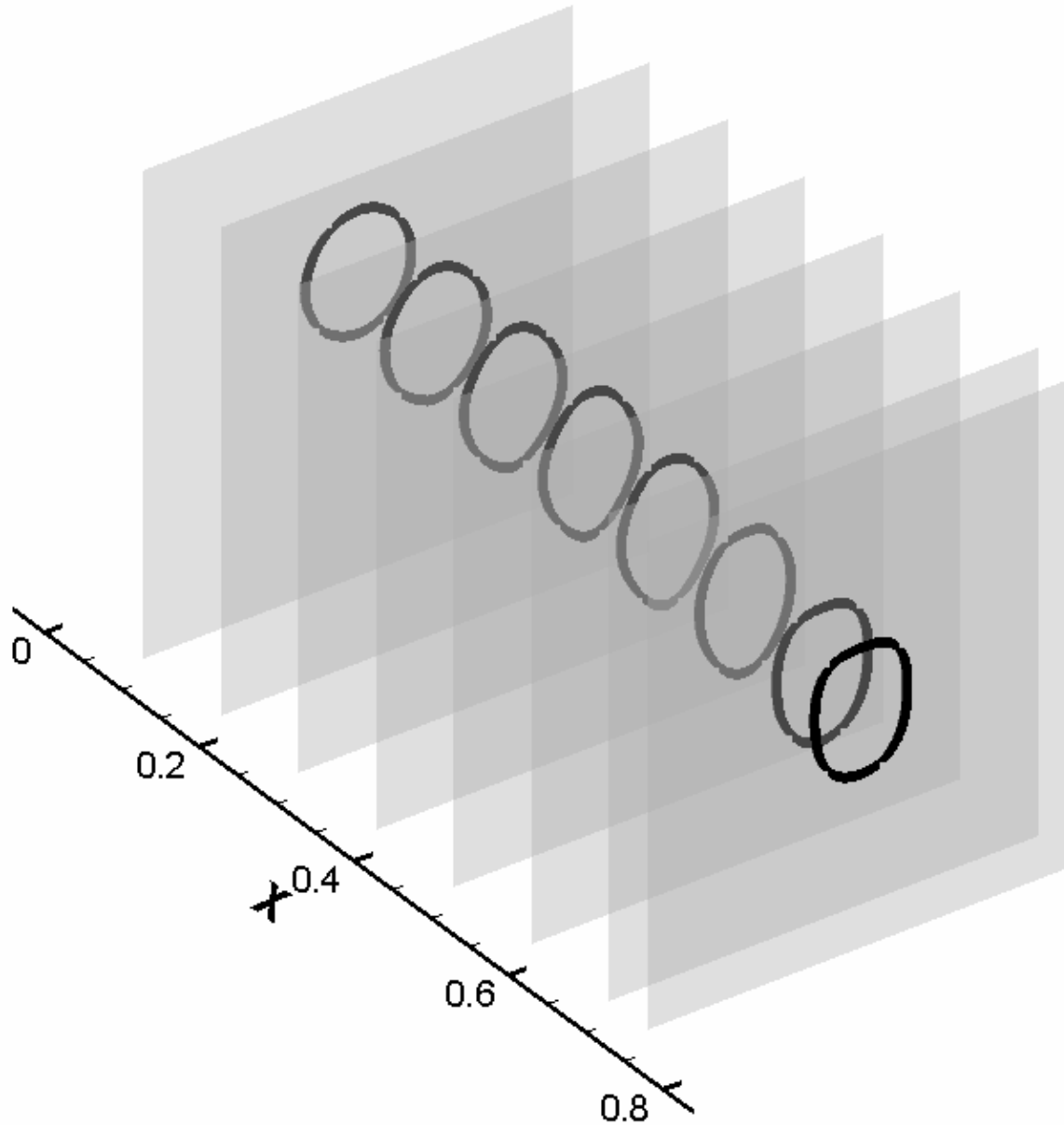
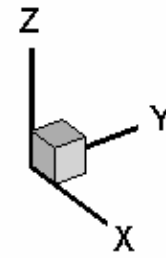
Jet trajectory relative to the magnetic axis of the solenoid.



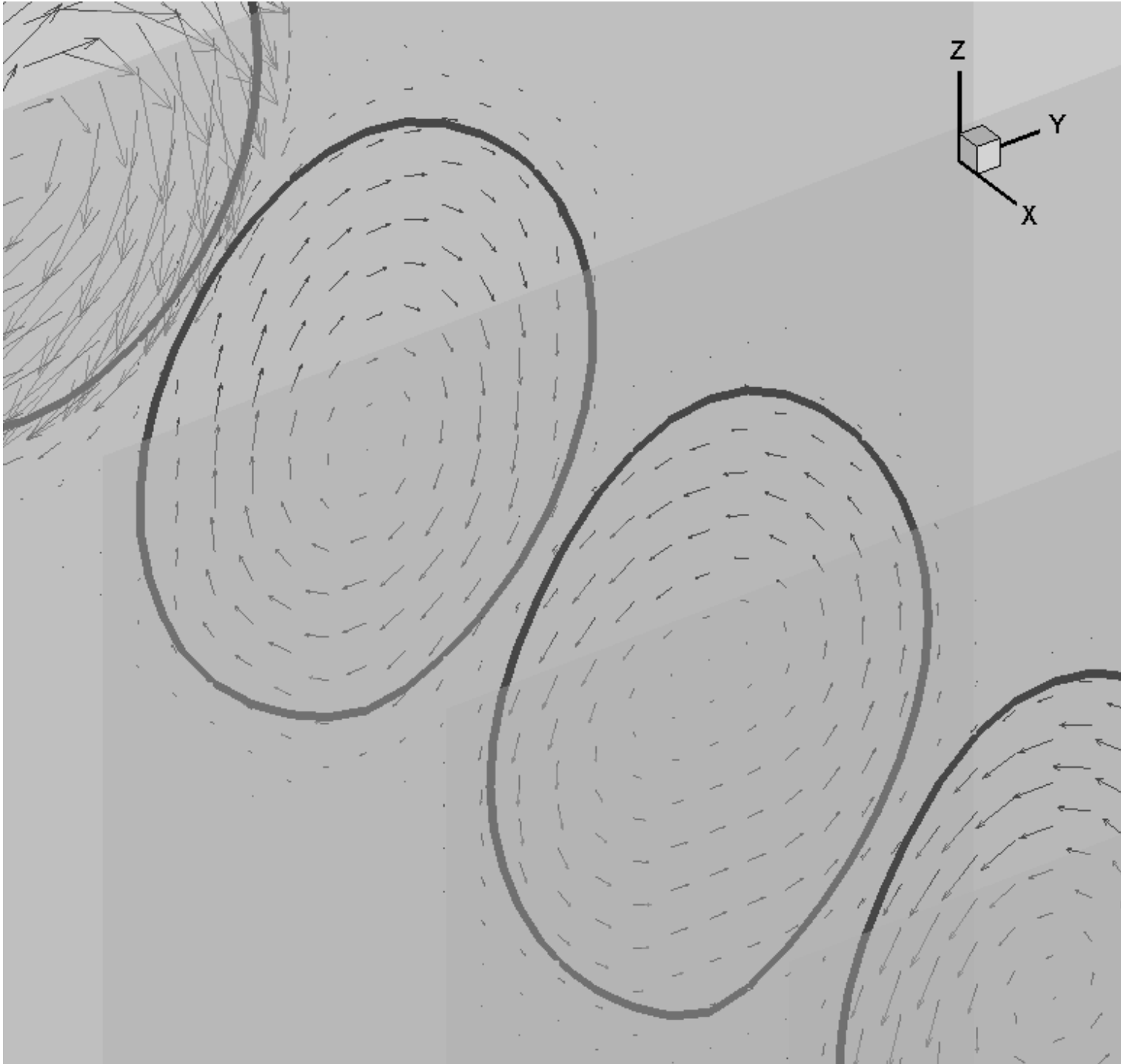
Magnification in x:y is 1:2

Solenoid center is at $x = 0.4$ in this
simulation

Jet cross section deformation

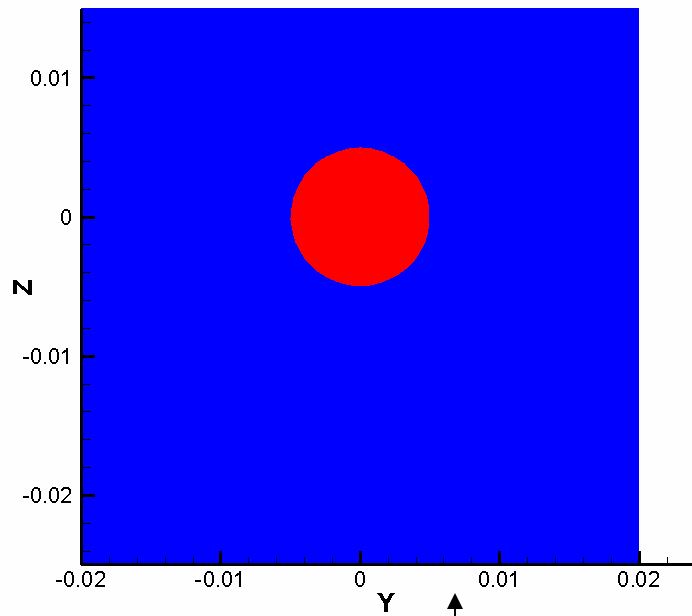


Jet cross sections
cut every 10 cm

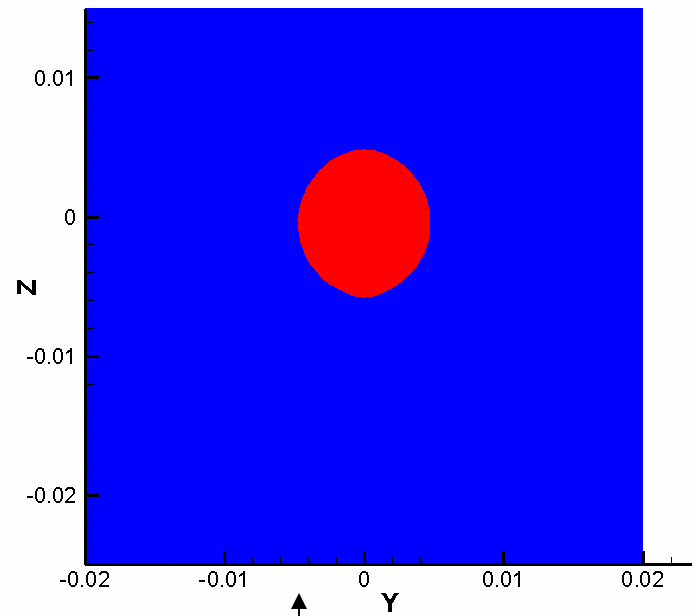


Zoomed in view.
Sections at $X = 10, 20, 30$ and 40 cm.

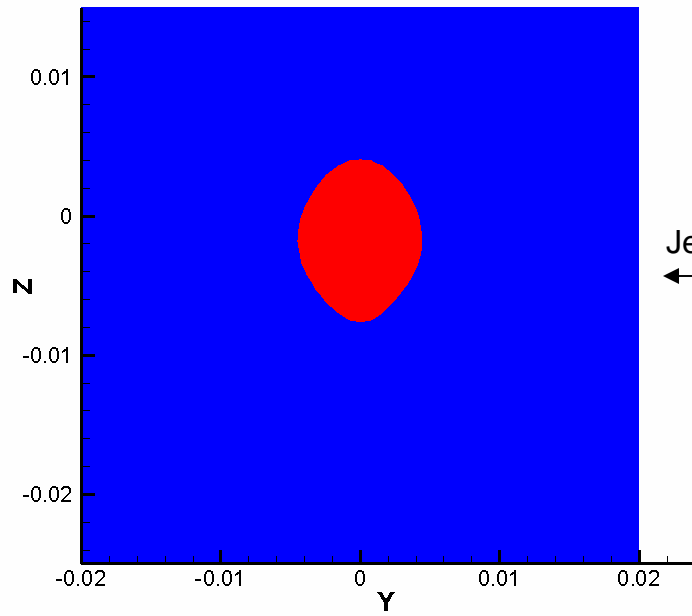
Reversal in induced current direction occurs between $X = 20$ and $X = 30$ cm.



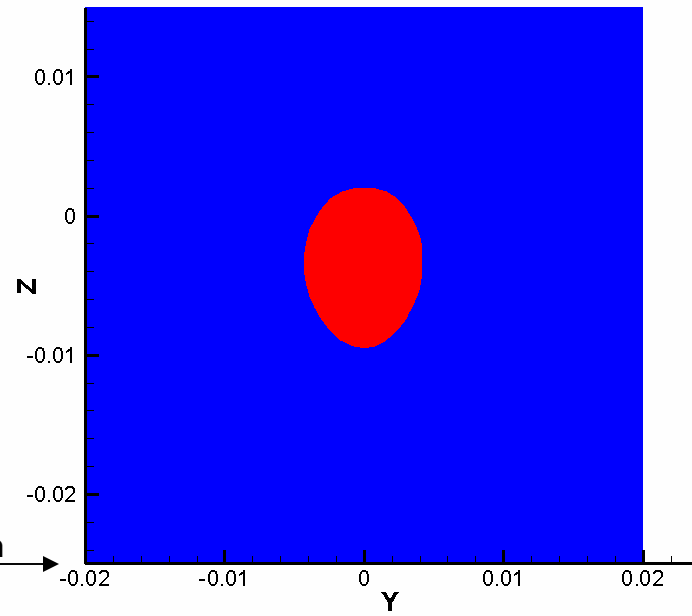
Jet section at X = 1 cm



Jet section at X = 20 cm



Jet section at X = 40 cm



Jet section at X = 60 cm

Remarks

- ❑ Neglect of electrically conducting nozzle in such a strong field is a big simplification – transition from nozzle to free surface flow will likely be an initial disturbance affecting jet shape. Future simulations should include this nozzle.
- ❑ For future simulations, higher resolution should be used
- ❑ This simulation executed in 1 day on 16 3GHz Xeon processors at UCLA
- ❑ Experiments at UCLA experimental facility using gallium alloy possible at low field $\sim 1.5\text{T}$, or higher field with magnet upgrade (if any interest I will look for suitable magnet in fusion community)