

O.B. Book

GO AWAY

This book is mine

I bought it

And I like it fine

I am the one

Who helped to choose it

And the world would end

If I should lose it





M. Berkowicz
L. Rychly

O-BOOK

Central High School
SENIOR CLASS



OMAHA « » NEBRASKA

VOLUME LII

1938



JOSEPH G. MASTERS . . . PRINCIPAL

STAFF

EDITOR-IN-CHIEF

NORMA ROSE MYERS

ASSOCIATE EDITORS

BARBARA BEERMAN

HARRY OTIS

FRANCES MORRIS

JOE KIRSHENBAUM

ANNE WHITE

ART EDITOR

ELEANOR JANE SMITH

AUDITOR

JAMES McDONALD

CIRCULATION MANAGER

JUNE BLISS

LITERARY ADVISER

ANNE LANE SAVIDGE

ART ADVISER

MARY L. ANGOOD

BUSINESS ADVISER

O. J. FRANKLIN

SENIOR CLASS SPONSORS

JULIA T. CARLSON

EXECUTIVE SPONSOR

GRACE M. KNOTT

MAYBEL BURNS

RUTH PILLING

J. J. GJENTHER

J. G. SCHMIDT

FLORENCE C. ROUSH

CENTRAL HIGH SCHOOL FACULTY

FRED HILL
Assistant Principal
Dean of Boys

JOSEPH G. MASTERS
Principal

JESSIE M. TOWNE
Assistant Principal
Dean of Girls

ENGLISH

Sara Vore Taylor
Bertha Neale
Tillie C. Anderberry
Nell Bridenbaugh
Julia T. Carlson
Josephine Frisbie
Grace H. McManus
Margaret A. Mueller
Frank M. Rice
Anne Lane Savidge
Helen L. Sommer
Louise Stegner
Martina Swenson
Jessie M. Towne
Augusta Turpin
Ida A. Ward
Alice West

MATHEMATICS

Amanda E. Anderson
G. E. Barnhill
R. B. Bedell
L. N. Bexten
Maybel Burns
Grace Fawthrop
Pearl Judkins
Sarah A. Ryan

HISTORY

Genevive W. Clark
Irma Costello
Mary E. Elliott
Edith C. Field
Elsie Fisher
Juliette Griffin
Elizabeth Kiewit
Mary A. Parker
Nelle Randall

MODERN LANGUAGES

Marjorie A. Boyd
Bess M. Bozell
May Mahoney
Ruth H. Pilling
Webster Porter
Margarita Rosemont
Margaret West

LATIN

Bernice S. Engle
Josephine Frisbie
Ruth H. Pilling
Webster Porter
Bessie S. Rathbun
Margaret West

PHYSICAL SCIENCE

J. J. Guenther
F. H. Gulgard
J. G. Schmidt

NATURAL SCIENCE

Jennie E. Hultman
Elly M. Jacobsen
Helen C. Lane

SOCIAL SCIENCE

Autumn Davies
Edith C. Field
F. Y. Knapple
Elmer B. Mortensen

COMMERCIAL

Edna S. Dana
Dorothy D. Anderson
Marguerette R. Burke
Ada Ewing
Harriet R. Harris
Esther M. Johnson
Gertrude Knie
Grace M. Knott
Angeline Tauchen

MUSIC

Carol Marhoff Pitts
Irene Haskins Jensen
Elsie Howe Swanson
Henry G. Cox
Lylyan Chudacoff Wick

HOUSEHOLD ARTS

Chloe Stockard
Evelyn Krotz
Florence C. Roush

STAGE MANAGER

Frank M. Rice

MECHANICAL ARTS

L. W. Busing
O. J. Franklin

ART

Mary L. Angood
Florence E. Power

EXPRESSION

Myrna Vance Jones
Frances McChesney
Elmer B. Mortensen

JOURNALISM AND DEBATE

Anne Lane Savidge
Elmer B. Mortensen

PHYSICAL TRAINING

Allie R. Morrison
Marian Treat

R. O. T. C.

Sergeant L. O. Wyatt
F. H. Gulgard
Faculty Sponsor

FRESHMAN COUNSELLORS

Irene Haskins Jensen
F. Y. Knapple

SCHOOL TREASURER

O. J. Franklin

CAFETERIA

Ruby Richardson

LIBRARY

Hazel C. Stewart
Catherine S. Blanchard
Margaret Weymuller

OFFICE

Adrian Westberg

Secretary

Dorothy Archer
Helen E. Davis

CLERK OF BOOKROOM

Ida Turco

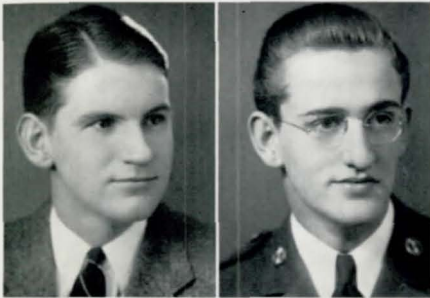
ATTENDANCE CLERK

Thelma Moss

Big Shots



D. Neely



RAY LOW

President, June. Register Staff, Circulation Manager (4); Press Club (4); State Press Convention (4); O-Book Staff, Circulation Auditor (4); Athletic Manager (2,4); Central High Players (1,2,3,4); Central High Players Plays (2,3,4); Library Monitor (4); Motor Club (2); Opera (4); Road Show (2,3); Senior Play (4)

JOHN MOSSMAN

President, January. R.O.T.C. (4); Greenwich Villagers (2); Art Contest (1); Regiment (1); Speakers' Bureau (1); German Club (1)



ORVILLE A. OLSON JR.

National Honor Society

Vice President, June. R.O.T.C., Major (4); C.O.C., President (4); Regiment (1,2,3); Crack Squad (2,3); Engineers (4); A Cappella Choir (2,4); Boys' Senior Glee Club (1); Boys' Junior Glee Club (1); Opera (2,4); Madrigal Singers (4); National Music Supervisors' Conference (4); Road Show (2,3,4), Manager (4); Junior Honor Society (2,3); Library Monitor (4); Mathematics Society (2,3), Secretary (3); Motor Club (3,4); Central Committee (3,4); Hi Y (1,2,3), Vice President (3); Football (4); Basketball (1); Baseball (2,3); Hi Y Conference (3)

MARIE MAURO

Treasurer, January. Student Control (2)



JAYNE WILLIAMS

National Honor Society

Secretary, June. Register Staff, Make-Up Editor (4); O-Book Staff (4); Quill and Scroll (4); Press Club (3,4), Secretary (4); Monitors' Council (4); Library Monitor (4); Register Representative (3); Road Show (3); Spring Frolic (4); Pep Club (4); Lininger Travel Club (1,2,3,4), Secretary (3); Junior Honor Society (1,3); Central Colleens (2,3,4), Vice President (4); State Press Convention (4); Student Control (2,3); Senior Play (4)

ROGER W. CRAMPTON

National Honor Society

Parliamentarian, June. R.O.T.C., Second Lieutenant (4); C.O.C. (4); Regiment (1,2,3); Debate Squad (2); Debate Team (3,4); Forensic Society (2,3,4), Secretary (4); Junior Honor Society (3); Library Monitor (4); Register Representative (3); Senior Play (4)



BRUCE MACALISTER

Treasurer, June. R.O.T.C., Captain (4); C.O.C. (4); Regiment (1,2,3); Register Staff, Make-Up Editor (4); O-Book Staff (4); Press Club (3,4), President (4); State Press Convention (4); Football (1); Library Monitor (3,4); Motor Club (3); Register Representative (2); Road Show Program Committee (4); Stamp Club (2,3,4), Vice President (3,4); Student Control (2); Senior Play (4)

ELAINE S. LAGMAN

Reporter, June. Register Staff (3,4), Assistant News Editor (4); Quill and Scroll (4); O-Book Staff (4); State Press Convention (4); Central High Players (1,2,3); Commercial Awards (3,4); Library Monitor (4); Make-Up (2,3); Motor Club (2); Press Club (4); Spring Frolic (4); Student Control (4); Swimming (1); Senior Play (4)



MARY MAENNER

Sergeant at Arms, June. A Cappella Choir (4); Girls' Senior Glee Club (3); Girls' Junior Glee Club (3); Le Cercle Francais (3,4); Opera (4); Road Show (3,4); Spring Frolic (3)

LEE SEEMANN

Sergeant at Arms, June. R.O.T.C., Captain (4); C.O.C., Sergeant at Arms (4); Regiment (1,2,3); Crack Squad (3); Basketball (1,2,4); Football (1,2,3,4); National Athletic Honor Society (4); O-Club, Sergeant at Arms (4); Track (1,2,3,4); Library Monitor (4); Hi Y (3); Central Committee (3,4), Sergeant at Arms (4); Gentlemen's French Club (2,3,4), Sergeant at Arms (4); Motor Club (2,3); Road Show (3); Intramural Sports (1,2,3)

NORMA ROSE MYERS

National Honor Society

O-Book Staff, Editor-in-Chief (4); Register Staff (4); Press Club (3,4); Quill and Scroll (4); State Press Convention (4); A Cappella Choir (3,4); Girls' Junior Glee Club (1); Girls' Senior Glee Club (2); Central Colleens (3,4); Junior Honor Society (1,2,3); Library Monitor (4); Lininger Travel Club (2,3,4); Monitors' Council (4); Motor Club (4); Senior Home Room Officer, Chairman (4); Spring Frolic (4); Student Control (3,4); Young Citizens' Contest (4); Central Committee (4)

JAMES C. McDONALD

National Honor Society

O-Book Staff, Auditor (4); Register Staff, Business Manager (4); Press Club (3,4); Quill and Scroll (4); Junior Honor Society (1,2,3); Library Monitor (4); Monitors' Council (4); Motor Club (2,3); Student Control (3); Central High Players (3); Latin Club (2,3); Road Show Advertising Auditor (4); Senior Play (4)

BARBARA BEERMAN

National Honor Society

O-Book Staff, Senior Editor (4); Register Staff (4); Quill and Scroll (4); Press Club (3,4); Register Representative (4); State Press Convention (4); Junior Honor Society (1,3); Central Colleens (3,4); Girls' Junior Glee Club (1); Library Monitor (4); Lininger Travel Club (2,3,4); Motor Club (3); Student Control (3,4); Senior Play (4); Pep Club (4)

JUNE BLISS

National Honor Society

O-Book Staff (3,4), Circulation Manager (4); Register Staff (4); Press Club (3,4), Treasurer (4); State Press Convention (4); Quill and Scroll (4); Central Colleens (1,2,3,4); Central High Players (1,2,3,4); Central High Players Plays (2,3); Junior Honor Society (1,3); Library Monitor (4); Lininger Travel Club (4); Motor Club (2,3,4); National Thespians (4); Road Show (4); Senior Home Room Officer, Sergeant at Arms (4); Senior Play (4); Spring Frolic (4); Student Control (1,2,3); Pep Club (4)

MARION WESTERING

National Honor Society

O-Book Staff, Associate Editor (4); Register Staff (4); Press Club (4); State Press Convention (4); Quill and Scroll (4); Junior Honor Society (1,2,3); Library Monitor (4); Lininger Travel Club (4); Le Cercle Francais (3,4); Central Colleens (1,3,4); Latin Club (2,3); Motor Club (2,3,4); Student Control (3,4); Junior Red Cross (3,4)

HARRY B. OTIS

National Honor Society

O-Book Staff, Military and Honors Editor (4); R.O.T.C., First Lieutenant (4); C.O.C., Vice President (4); Regiment (1,2,3); Register Staff (4); Quill and Scroll (4); Press Club, Vice President (4); Register Representative (2); A Cappella Choir (2); Boys' Senior Glee Club (1); Boys' Junior Glee Club (1); Opera (2); Junior Honor Society (2,3); Library Monitor (3,4); Latin Awards (3); Latin Club (2,3); Treasurer (3); Mathematics Society (4); Motor Club (2); Road Show (4); Student Control (2,3); Hi Y (1,2,3,4); Loquax Staff (2); Athletic Manager (2,3); Senior Play (4)

ANNE WHITE

O-Book Staff, Associate Editor (4); Register Staff (4); Quill and Scroll (4); Press Club (4); State Press Convention (4); Register Representative (4); A Cappella Choir (3,4); Girls' Senior Glee Club (2); Girls' Junior Glee Club (1); National Music Supervisors' Conference (4); Opera (3); Regional Music Conference (3,4); Central Colleens (1,2,3,4); Library Monitor (4); Student Control (2,3,4)

FRANCES MORRIS

National Honor Society

O-Book Staff, Associate Editor (4); Register Staff (4); Press Club (4); State Press Convention (4); Quill and Scroll (4); Central Colleens (3,4); Central High Players (1,2,3,4); Central High Players Plays (3,4); Junior Honor Society (1,2,3); Library Monitor (4); Make-Up (4); Road Show (4); Spring Frolic (3,4); Student Control (3,4); Senior Play (4); Miss Central IV

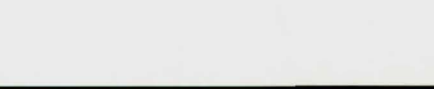
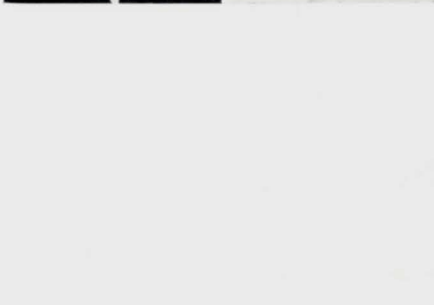
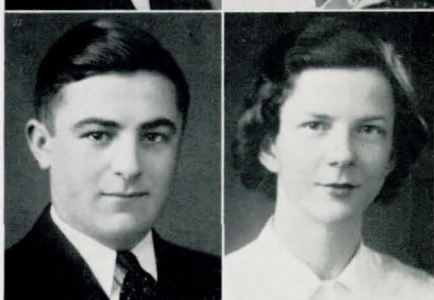
JOE KIRSHENBAUM

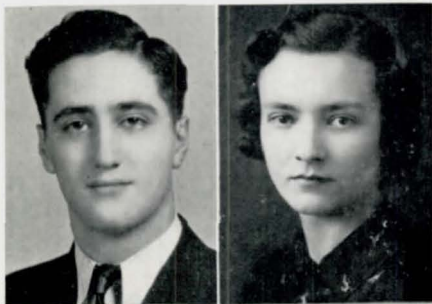
O-Book Staff, Sports Editor (4); Register Staff, Assistant Sports Editor (4); State Press Convention (4); Student Control (3,4); Register Representative (3); Press Club, Sergeant at Arms (4); Motor Club (3,4); Basketball (1,3); Boys' Junior Glee Club (3); Boys' Senior Glee Club (3); Library Monitor (4); Commercial Awards (4)

ELEANOR JANE SMITH

National Honor Society

O-Book Staff, Art Editor (4); Student Control (1,2,3,4); Titians (1,2,3,4); Library Monitor (4); Junior Honor Society (3); Greenwich Villagers (2,3,4); Girls' Junior Glee Club (1,2); Commercial Awards (3); Art Contest (4); Pep Club (4)





ALBERT ABRAHAM

Library Monitor (4); Register Representative (4); Student Control (3,4)



CHRISTINE M. ALGER

Girls' Junior Glee Club (4); Girl Reserves (3); Orchestra (3); G.A.A. (1)



HERBERT ACKER

Library Monitor (4); German Club (4); Motor Club (3); Skating Club (3,4); Stamp Club (3); Student Control (3,4)



LEO ALPERSON

Library Monitor (3,4); Student Control (3,4); Motor Club (2,3,4); Skating Club (3,4); Stamp Club (1); Latin Club (2); Senior Play (4); Register Representative (4)



NANCY ADAMS

Library Monitor (4); Le Cercle Francais (4); Lininger Travel Club (3,4); Girls' Junior Glee Club (1,2); Los Sabios (3); Student Control (2,3,4); Central Colleens (2,3); Motor Club (2,3); O-Book Staff (4); Spring Frolic (4)



MARCELLA ALTMAN

Girls' Junior Glee Club (1,2); Girls' Senior Glee Club (3); Library Monitor (4); Central Colleens (3,4); Senior Play (4); Register Representative (4); Commercial Awards (3,4); Motor Club (2,3,4); Student Control (1,3,4)



ALEX ADLER

Student Control (3,4); Motor Club (2,3,4); Register Representative (3)



DONALD ANDERSON

R.O.T.C., Staff Sergeant (4); Regiment (1,2,3); O-Book Staff (4); Boys Junior Glee Club (1); Boys' Senior Glee Club (2); Opera (2); Los Sabios (4); Speakers' Bureau (3,4); Student Control (4); Motor Club (2,3,4); Latin Club (2); Mathematics Society (2); Register Representative (1); Hi Y (3,4); Tennis (4); Track (3); Bowling League (3,4); Captain (4); Intramural Sports (1,2); Senior Play (4)



GEORGE J. ALEVEZOS

R.O.T.C., Second Lieutenant (4); C.O.C. (4); Regiment (1,2,3); Library Monitor (4); Monitors' Council (4); Gentlemen's French Club (3); Latin Club (2); Hi Y (1); Motor Club (2,3); Register Representative (1,2); Speakers' Bureau (4); Loquax (2)



WALTER ANDERSON

R.O.T.C., Major (4); C.O.C. (4); Regiment (1,2,3); Engineers (4); Crack Squad (2,3); Register Staff (4); O-Book Staff (4); State Press Convention (4); Cheer Leader (4); Hi Y (3); Library Monitor (4); Mathematics Society (3,4); Sergeant at Arms (4); Press Club (3,4); Road Show (2,3,4); Road Show Advertising (4); Speakers' Bureau (3); Senior Play (4)

HERBERT ANDREWS

A Cappella Choir (2,3,4); Boys' Senior Glee Club (1); Boys' Junior Glee Club (1); Opera (2,3,4); National Music Supervisors' Conference (3); Library Monitor (4); Motor Club (3,4); Student Control (2,4)

LOIS BARISH

O-Book Staff (4); Press Club (3); Register Representative (2); Student Control (3); Motor Club (3); Central Colleens (1,2); Central Committee (3,4); G.A.A. (4); Junior Red Cross (4); Sports (4)

HARRY ARCHIBALD

Library Monitor (4); Mathematics Society (4); Motor Club (2,3,4); Hi Y (3); Wrestling (4); Track (1,2,3,4); Football (1); Latin Club (2); Stamp Club (1)

BETTYE BATES

Press Club (4); Register Representative (4); Library Monitor (4); Central Colleens (2,3,4); Skating Club (3,4); Sergeant at Arms (4); Spring Frolic (2); Latin Club (2,3); Student Control (1,2); Boule Club, Secretary (1)

LOREN BAILEY

Road Show (3); Motor Club (3,4); Skating Club (3,4), President (3), Vice President (4); Student Control (2,3)

WAUNETA BATES

Central Colleens (2,3,4); Greenwich Villagers (2); Le Cercle Francois (4); Library Monitor (4); Lininger Travel Club (3,4); O-Book Staff (4); Student Control (3); Pep Club (4)

MARY LOU BALL

Register Staff (4); Press Club (4); State Press Convention (4); Girls' Senior Glee Club (2); Girls' Junior Glee Club (1); Library Monitor (4); Lininger Travel Club (2,3,4); Motor Club, Home Room Representative (4); Road Show (2); Pep Club (4)

ROSALINE BAUM

Central Colleens (2,3,4); G.A.A. (1); Library Monitor (4); Los Sabios (4); Student Control (3)

CHARLES E. BARBER

Library Monitor (4); Hi Y (2); Regiment (1,2); Road Show (4); Speakers' Bureau (2,3,4); Senior Play (4); Basketball (1); Project Committee (1); Road Show (4)

DONALD W. BECK

National Honor Society
A Cappella Choir (2,3,4); Boys' Senior Glee Club (1); Boys' Junior Glee Club (1); Register Staff (4); Madrigal Singers (4); Male Quartet (3); Library Monitor (3); Road Show (3,4); Basketball (1,2); Football (1,2,3); Mathematics Society, Treasurer (4); Motor Club (2); Opera (2,3,4); Regiment (1); Skating Club (4); Speakers' Bureau (4)



**JAY BEECROFT**

Library Monitor (4); Motor Club (2); Regiment (1,2); Skating Club (3,4); Track (3,4); Wrestling (3); Intramural Sports (2)

RUTH LEE BLOCH

Library Monitor (4); Junior Honor Society (3); Student Control (4); Spring Frolic (4); Road Show (1); Motor Club (2,3,4); Home Economics Club (2); Central Colleens (2,3); Commercial Awards (3,4); Senior Play (4)

**ERVIN BEITEL**

Student Control (2,3,4); Speakers' Bureau (3,4); Orchestra (2,3); Motor Club (1,2); Latin Club (2); Debate Squad (2,3); Boys' Junior Glee Club (2,3)

MILTON BLOOM

Library Monitor (4); Student Control (2,4); Motor Club (2,3,4); Latin Club (2,3); Athletic Manager (4); Track (3,4)

**BETTY BENNETT**

A Cappella Choir (3,4); Girls' Junior Glee Club (2); Girls' Senior Glee Club (2); Opera (3,4); National Music Supervisors' Conference (4); Le Cercle Francais (4); Latin Club (2); Home Economics Club (1,2)

MILDRED BORN

Library Monitor (4); Motor Club (2,3); Commercial Awards (3,4); G.A. A. (1,4); Baseball (1,2,3,4); Basketball (1,2,3,4); Hockey (1,2); Volleyball (1,2,3,4); Pep Club (4)

**MILDRED L. BERKOWITZ**

O-Book Staff (4); Library Monitor (4); Central Colleens (1,2,3); Art Contest (3,4); Greenwich Villagers (3,4); Vice President (4); Motor Club (3,4); Student Control (2,3,4); Senior Art (4); Junior Red Cross (4); Senior Play (4)

PAUL D. BOX

Speakers' Bureau (2,3); Motor Club (2,3,4); Student Control (2,3,4); Regiment (1,2,3); Football (2,3,4); Track (2,3); Wrestling (2,3)

**JANE BIRK**

Library Monitor (4); Student Control (4); Latin Club (1,2); Central High Players (1); Girls' Junior Glee Club (1); Girls' Senior Glee Club (2,3)

GEORGE D. BRADNER

Mathematics Society (2,3,4); Motor Club (2,3); Track (4); Latin Club (2); Hi Y (3); Senior Play

HARRIET E. BRAUCH

Library Monitor (4); Girl Reserves (4); Discussion Club (4); Central Col-
leens (2,3,4); Central High Players (4); Los Sabios (1,2,3); Project
Committee (2,3); Skating Club (3,4); Stamp Club (4); Student Control
(4); Pep Club (3); Senior Play (4)

PETER BROAD

R.O.T.C., First Lieutenant (4); C.O.C. (4); Regiment (1,2,3); A Cap-
pella Choir (2,4); Boys' Junior Glee Club (1); Boys' Senior Glee Club
(1); Opera (2,4); Library Monitor (4); Motor Club (2); Basketball (1,
2); Boys' Rifle Team (3,4); O-Club (4); Register Representative (3);
Track (1,3); Senior Play (4)

MARY KAY BRAWNER

G.A.A. (1,2,3,4), Vice President (4); Baseball (1,2,3,4); Basketball (3,
4); Motor Club (2,3); Student Control (2,3,4); Volleyball (1,2,3,4);
Pep Club (4)

ELAINE C. BROWN

Register Staff (3,4); O-Book Staff (4); Press Club (3,4); Library Mon-
itor (4); Register Representative (4); Skating Club (3,4); Student
Control (3,4)

DWIGHT BRIGHAM

R.O.T.C., Captain (4); C.O.C. (4); Regiment (1,2,3); Road Show (2,3,4);
State Music Contest (4); Senior Play (4)

LOY T. BROWN

National Honor Society

R.O.T.C., Major (4); C.O.C., Secretary (4); Regiment (1,2,3); Engineers
(3,4); O-Book Staff (4); Mathematics Society, President (4); Secretary
(4); Speakers' Bureau (3); Road Show (3); Library Monitor (4); Junior
Honor Society (1,2,3); Basketball (1,2); Athletic Manager (2); Register
Representative (1); Senior Play (4)

A. BRUCE BRIGHTMAN

Motor Club (2,3,4); Road Show (4); Register Representative (1,2);
Gentlemen's French Club (4); Hi Y (1,2,3,4); Football (1,2,3); Regiment
(1,2); Track (4)

ROBERT W. BUCHANAN

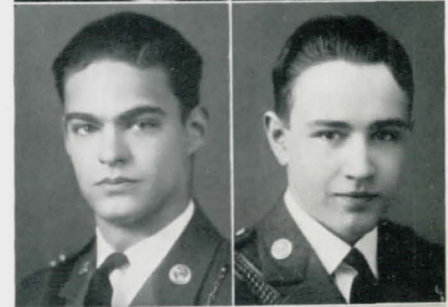
National Honor Society

R.O.T.C., Captain (4); C.O.C. (4); Regiment (1,2,3); Crack Squad (3);
O-Book Staff (4); Central Committee (2,3,4); Central High Players
(4); Central High Players Play (4); Cheer Leader (4); French Play (1);
Gentlemen's French Club (1,2,3); Hi Y (1,2,3); Junior Honor Society
(2,3); Mathematics Society (3); Motor Club (2,3,4); Road Show (3,4);
Senior Play (4); Road Show Ticket Committee (4)

EMILY BRITTON

SYLVESTER BUCKNER

Student Control (4); Motor Club (2,3,4)





BILL BUNCE

National Honor Society
R.O.T.C., First Lieutenant (4); C.O.C. (4); Regiment (1,2,3); Boys' Junior Glee Club (1); Boys' Senior Glee Club (2); Hi Y (1,2,3); Junior Honor Society (1,3); Library Monitor (4); Mathematics Society (3,4); Sergeant at Arms (4); Secretary (4); Opera (2); Speakers' Bureau (3); Student Control (2); Tennis (4); Motor Club (3)

GWENETH CARSON

National Honor Society
Register Staff (4); O-Book Staff (4); Quill and Scroll (4); Junior Honor Society (1,2,3); Central Colleens (2,3,4), President (4); D.A.R. Award (4); Latin Club (2,3), Vice President (3); Library Monitor (4); Lininger Travel Club (4); Motor Club (2,3); Press Club (3,4); Student Control (3); Spring Frolic (4); Junior Red Cross (3,4); Pep Club (4); Senior Announcement Committee (4); Le Cercle Francais (3); Senior Play (4)



ROBERT T. BURNS JR.

R.O.T.C., Second Lieutenant (4); C.O.C. (4); Regiment (1,2,3); French Play (1); Gentlemen's French Club (1,2,3,4); Motor Club (2,3,4); Register Representative (1,2,3,4); Road Show (3,4); Speakers' Bureau (1,2,3,4); Tennis (4); Junior Red Cross (4)

LILIAN MARIE CARTER

Junior Honor Society (2,3); Home Economics Club (3,4), Vice President (4); Commercial Awards (3,4); Student Control (3,4)



ROSE MARIE CANIGLIA

Girls' Junior Glee Club (1); Project Committee (2,3,4); Boule Club (1,2), Secretary (1), President (2); Latin Club (3); Commercial Awards (3,4); Girl Reserves (4); Motor Club (2,3); Senior Play (4)

SEBASTINO CASTRO

O-Club (2,3,4); Register Representative (2); Basketball (1,2,3,4); Baseball (2,3,4); Football (1,2); Track (1); National Athletic Honor Society (3); Intramural Sports (1,2,3,4)



WILLIAM L. CAREY

Library Monitor (4); Regiment (1,2,3); Road Show (3,4); Central High Players (3); Central High Players Play (3); Crack Squad (3); Football (1); Gentlemen's French Club (1,2,3); Hi Y (3); Mathematics Society (4); Motor Club (1,2,3); Junior Red Cross (4), Vice President (4); Bowling (4)

JOSEPHINE ANN CATALANO

Central High Players (2,3); Student Control (2,3); Basketball (1); Central Colleens (3); Make-Up (3); Motor Club (2); Register Representative (3); Volleyball (1)



IRA CARPENTER

JOHN CATLIN

National Honor Society
R.O.T.C., First Lieutenant (4); C.O.C. (4); Regiment (1,2,3); Junior Honor Society (1,2,3); A Cappella Choir (3,4); Boys' Senior Glee Club (2); Boys' Junior Glee Club (1); Hi Y (4); Latin Club (2); Mathematics Society (3,4); Motor Club (4); Register Representative (1,2); Speakers' Bureau (4); Opera (3); Chess Club (3)

DOROTHY CHAIT

Register Staff (4); O-Book Staff (4); Library Monitor (4); Press Club (4); Junior Red Cross (4); Central Colleens (1); Motor Club (2,3); Student Control (2,3); Senior Play (4)

WILLIAM CHIN

Library Monitor (3,4); O-Club (4); Boys' Senior Glee Club (3); Boys' Junior Glee Club (2); Speakers' Bureau (2,3); Motor Club (1); Tennis (2,3); Tennis Tournament (3); Track (2,3); Football (2,3); Basketball (2,3); Baseball (1)

JOHN CHAMBERLIN

National Honor Society

R.O.T.C., Second Lieutenant (4); C.O.C. (4); Regiment (1,2,3); Library Monitor (4); Mathematics Society (4); Monitors' Council (4); Junior Honor Society (1,2,3); Senior Play (4)

FRANCES A. CHRISTINA

Girls' Junior Glee Club (3,4); Central Colleens (4); Make-Up (3); Orchestra (3,4); Skating Club (3,4); Student Control (3)

BETH SEVA CHERNISS

Central Colleens (1,2,3); Commercial Awards (3,4); Le Cercle Francais (2); Library Monitor (4); Motor Club (2,3,4); Senior Play (4); Student Control (2,3,4); Titians (2,3,4); Skating Club (3)

JACK R. CHUDA

A Cappella Choir (2,3,4); Boys' Senior Glee Club (1); Boys' Junior Glee Club (1); Opera (2,3,4); National Music Supervisors' Conference (3); Latin Club (3); Motor Club, Home Room Representative (4); Regiment (1,2,3); Skating Club (3)

JAMES G. CHILDE

R.O.T.C., Second Lieutenant (4); C.O.C. (4); Regiment (1,2,3); Engineers (3); Hi Y (1,2), Secretary (2); Library Monitor (4); Motor Club (3); Bowling (4)

JAMES CLAPPER

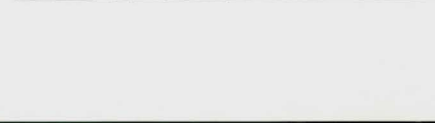
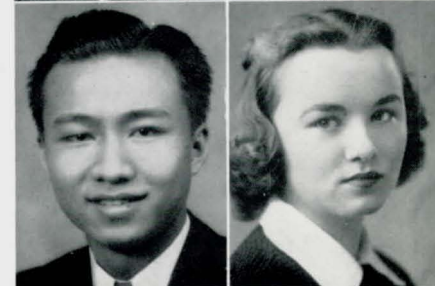
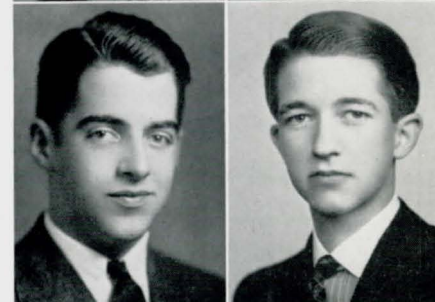
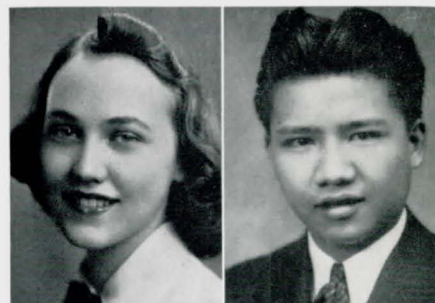
A Cappella Choir (2); Boys' Junior Glee Club (1); Boys' Senior Glee Club (1); Library Monitor (4); German Club (3,4); Sergeant at Arms (4); Regiment (1,2,3); Motor Club (3); Hi Y (3); Basketball (2)

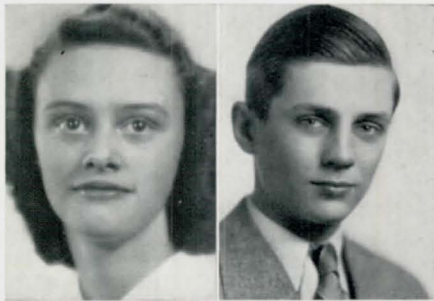
CLARENCE CHIN

Monitors' Council (4); Library Monitor (3,4); Student Control (4); Tennis (3,4), Captain (4); O-Club (4); Hi Y (4); Stamp Club (2,3,4); Skating Club (4); Basketball (2,3); Tennis Tournament (3,4)

BETTY MARIE CLARKE

Library Monitor (4); Los Sabios (4); Motor Club (3,4); Speakers' Bureau (4); Student Control (2,4)



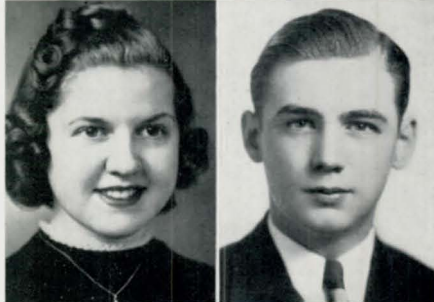


BETTY JEANNE CLARKE

National Honor Society
Register Staff (4); Quill and Scroll (4); A Cappella Choir (3,4); Girls' Junior Glee Club (1); Girls' Senior Glee Club (2); Central Colleens (2,3,4); Treasurer (4); Central Committee (1,2,3,4); Junior Honor Society (1,3); Le Cercle Francais (3); Library Monitor (4); Lininger Travel Club (1,2,3,4); Motor Club (2,3); National Music Supervisors' Conference (2,3); Opera (4); Press Club (3,4); Spring Frolic (4); State Press Convention (4); Student Control (3); Pep Club (4); Junior Red Cross (2,3); L'Alliance Francais (3); Senior Announcement Committee (4); Rifflery (4); O-Book Circulation (4); Senior Play (4)

GEORGE COCKLE

A Cappella Choir (3); Boys' Senior Glee Club (2); Boys' Junior Glee Club (1); Hi Y (1,2); Junior Honor Society (3); O-Club (4); Opera (3); Regiment (1,2); Road Show Advertising (1,2); Tennis (3,4); Wrestling (4)



AGNETA E. CLAUSSEN

Library Monitor (4); Central Colleens (1); Home Economics Club (3); Student Control (4)

JOHN COCKLE

National Honor Society
A Cappella Choir (2); Boys' Senior Glee Club (1); Boys' Junior Glee Club (1); Football (2); Gentlemen's French Club (4); Hi Y (1,2); Junior Honor Society (1,2,3); Latin Award (2); Library Monitor (4); Opera (2); Regiment (1,2); Tennis (3,4)



MARIAN CLAYMAN

Library Monitor (4); Central Colleens (2,3); Commercial Awards (3,4); G.A.A. (1); Student Control (3,4); Volleyball (1); Senior Play (4)

DONALD COHEN

Motor Club (2,3,4); Student Control (4); Los Sabios (4)



RAY CLEVENER

R.O.T.C., Second Lieutenant (4); C.O.C. (4); Regiment (1,2,3); Orchestra (1,2,3,4); Vice President (4); Opera (2,3); Road Show (1,2,3,4); Project Committee (2); Stamp Club (2); President (2); Student Control (2,3); State Music Contest (3)

HASKELL COHEN

National Honor Society
R.O.T.C. (4); Regiment (1,2,3); Basketball (1,2); French Play (2); Football (1,2); Motor Club (2,3,4); Library Monitor (4); Press Club (3,4); Quill and Scroll (4); Register Staff, Sports Editor (4); State Press Convention (4); Chess Club (3,4); Senior Play (4)



BETTY COBRY

Central Colleens (3); Home Economics Club (4); Le Cercle Francais (3); Motor Club (3); Senior Play (4); Skating Club (3); Speakers' Bureau (4); Student Control (4); Junior Red Cross (4)

RALPH S. COMBS JR.

O-Book Staff (4); Press Club (3,4); Motor Club (2); Register Staff (4); Regiment (2,3); Register Representative (3); Road Show Advertising (2,3); Speakers' Bureau (3); Stamp Club (2,3); State Press Convention (3); Library Monitor (4); Gentlemen's French Club (2,3); Discussion Club (2)

VIRGINIA L. COMBS

Library Monitor (4); Spring Frolic (4); Press Club (4); Make-Up (4); Student Control (2,3,4); Titians (1,2,3,4); Latin Club (2); G.A.A. (4); Central Colleens (2); Baseball (4)

MEYER M. CRANDELL

Debate Squad (2,3,4); Debate Team (3,4); O-Book Staff (4); Motor Club (2); Press Club (3); Regiment (1); Register Staff (3); Speakers' Bureau (1); Student Control (4); Forensic Society (2,3,4); President (4); Discussion Club (3,4); Declamatory (2,3,4)

BETTY CONDON

Central Committee (2,3,4); Pep Squad (4); Lininger Travel Club (2,3,4); Red Cross (4); Motor Club (2,3,4); Road Show (2,4); Student Control (3,4); Spring Frolic (4)

GOLDEN CROUCH

EVALYN LaVERN CORP

MARY ANNE CROWLEY

A Cappella Choir (4); Art Contest (4); Girls' Senior Glee Club (4); Girls' Junior Glee Club (4); Le Cercle Francais (2,3,4); Library Monitor (4); Lininger Travel Club (3); Central High Players (1,2); Motor Club (3,4); National Music Supervisors' Conference (4); Project Committee (4)

HELEN COYNE

Central Committee (3,4); Pep Squad (4); Girls' Junior Glee Club (1); Lininger Travel Club (2,3,4); Road Show (4); Student Control (3,4); Junior Red Cross (4)

ANGELA CRUISE

Press Club (4); Make-Up (4); Junior Red Cross (4); Central Colleens (2); Motor Club (3); Project Committee (1); Skating Club (3); Le Cercle Francais (2); Home Economics Club (2); Girls' Junior Glee Club (1); Senior Play (4)

GERARD COZETTE

Football (4); Library Monitor (4); Motor Club (3,4); Skating Club (3); Track (3,4); Wrestling (4); Intramural Sports (2,3)

DON DANIELSON

Student Control (2); Student Control Convention (2); Track (3); Regiment (1,2,3)





GEORGE H. DECKER

Library Monitor (4); Speakers' Bureau (4); Track (3,4); Student Control (3,4); Central High Players (1); Central High Players Plays (1)

PATRICIA DRANEY

Girls' Junior Glee Club (1); Girls' Senior Glee Club (2,3)

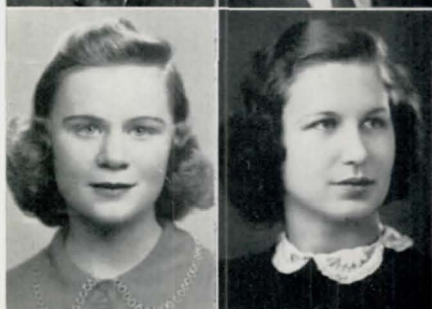


MAX DELROGH

Student Control (2,3,4); Discussion Club (4); Motor Club (2,3,4); Skating Club (3,4), Vice President (4)

WALTER J. DUDA

Mathematics Society (3,4); Motor Club (3,4); Register Representative (1); Hi Y (2,3,4); Football (4); Intramural Sports (4); Bowling (4); Senior Play (4)



ARIS ELIZABETH DeWALD

Register Staff, Exchange Editor (4); O-Book Staff (4); Junior Honor Society (3); Library Monitor (4); Le Cercle Francais (2); Central High Players (3,4); Red Cross (3,4); Treasurer (4); Central Colleens (1,3); Make-Up (3,4); Press Club (3,4); Speakers' Bureau (4); Register Representative (2); Motor Club (2,4); Student Control (2,4); Senior Play (4)

KATHRYN JEAN DUSTIN

Register Staff (4); O-Book Staff (4); Press Club (3,4); Girls' Rifle Club, Treasurer (4); Junior Honor Society (3); Library Monitor (4); Girls' Rifle Team (3,4); G.A.A. (4); Commercial Awards (3,4); Library Monitor (4); Los Sabios (3); Volleyball (4); Student Control (1,2,3,4); Tennis (3,4); Motor Club (4); Baseball (3,4); Basketball (3,4)



MILDRED DORSEY

Girls' Junior Glee Club (2,3); Spring Frolic (2); Student Control (3); Motor Club (2,3)

MARGUERITE DVORAK

O-Book Staff (4); Girls' Junior Glee Club (3); Girls' Senior Glee Club (3); Le Cercle Francais (4); Library Monitor (4); Greenwich Villagers (2,3,4); Student Control (3,4); Art Contest (4); Senior Art (4); Pep Club (4); G.A.A. (1); Swimming (1); Spring Frolic (4); Senior Play (4)



EVELYN DORTCH

Girls' Junior Glee Club (2,4); Los Sabios (3); Motor Club (3,4); Student Control (1,2,3)

GEORGE DYBALL

National Honor Society
R.O.T.C., Major (4); C.O.C. (4); Regiment (1,2,3); Engineers (4); Junior Honor Society (2,3); Library Monitor (4); Mathematics Society (3); Register Representative (3); Boys' Rifle Team (2,3,4), Captain (4); O-Club (2,3,4)

VALDENE D. ENOS

Library Monitor (4); Girl Reserves (3,4), President (4); Latin Club (3); Girls' Junior Glee Club (1); Commercial Awards (3,4); Pep Club (4); Central Colleens (1,2,4)

JACK FAGAN

R.O.T.C., Master Sergeant (4); Regiment (1,2,3); Skating Club (3,4), President (4); Stamp Club (3); Motor Club (2,3); Football (1,2,3,4); National Athletic Honor Society (4); Register Representative (1,2); Senior Play (4)

WALTER ENGEL

Senior Play (4)

JAYNE FEE

A Cappella Choir (3,4); Girls' Junior Glee Club (1); Girls' Senior Glee Club (2); Opera (3); National Music Supervisors' Conference (4); Central Colleens (2,4); Latin Club (2); Library Monitor (4); Motor Club (2,3,4); Road Show (3); Skating Club (3,4); Spring Frolic (3); Student Control (3,4)

BILL ENGLER

Junior Honor Society (1,2,3); Library Monitor (4); Mathematics Society (4); Motor Club (3); Road Show (4); Hi Y (1,2,3); Baseball (1)

MERRIAM FIEDLER

Central Colleens (1,2,3,4); Girls' Junior Glee Club (3); Le Cercle Francais (3,4); Motor Club (3,4); Orchestra (1); Press Club (4); Spring Frolic (3,4); Student Control (4); Class Officer (1,2)

SHIRLEY L. EPSTEIN

O-Book Staff (4); Press Club (4); Register Representative (4); Library Monitor (4); Junior Honor Society (2); Girls' Junior Glee Club (1,2); Central Colleens (1,2,3,4); Motor Club (3,4); Spring Frolic (4); Student Control (2,4)

ANTHONY FILIPCIC

Student Control (4); Motor Club, Representative (3); Boys' Junior Glee Club (3); Boys' Senior Glee Club (3); Commercial Awards (3,4)

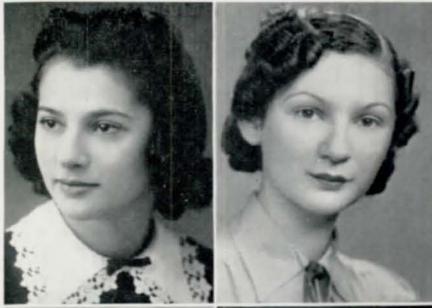
PHYLLIS EYER

Library Monitor (4); Road Show (4); Girls' Junior Glee Club (2); Latin Club (2); Los Sabios (3); Student Control (3)

JACK FILKINS

O-Book Staff (4); Register Staff (4); Press Club (4); State Press Convention (4); Student Control (4); Motor Club (4); O-Book Circulation (4)





FANNIE FIRESTONE

Central Colleens (1,2,3,4); Central High Players (1,2,3,4); Treasurer (4); Library Monitor (4); Motor Club (2,3,4); Road Show (4); Skating Club (3,4); Speakers' Bureau (3,4); Student Control (2,3,4); Central High Players Play (4); Senior Play (4); Ticket Manager, Senior Play (4)

LORRAINE FREGGER

A Cappella Choir (4); Girls' Junior Glee Club (3); Girls' Senior Glee Club (3); Opera (4); Le Cercle Francais (4); Student Control (3); Spring Frolic (3); Pep Club (4)



BONNIE LEE FITCH

Motor Club (1); Road Show (2,3,4); Senior Play (4); Speakers' Bureau (4); Spring Frolic (3); Student Control (3)

BERNICE FRIEDEL

Register Staff (4); Quill and Scroll (4); O-Book Staff (4); Press Club (4); Junior Honor Society (1,2,3); Library Monitor (4); Central Colleens (1,2,3,4); Student Control (3,4); Motor Club (4); Junior Red Cross (4); Senior Play (4)

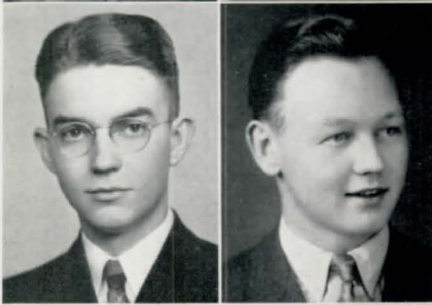


PEGGY FLINT

Library Monitor (4); Mathematics Society (4); Student Control (4); Riflery (4)

DORIS FRIEDMAN

Motor Club (4); Commercial Awards (4); Skating Club (4)



J. PHIL FORD

National Honor Society
R.O.T.C., Second Lieutenant (4); C.O.C. (4); Regiment (1,2,3); Register Staff, Assistant Business Manager (4); Quill and Scroll (4); A Cappella Choir (2); Boys' Junior Glee Club (1); Boys' Senior Glee Club (1); Opera (2); Junior Honor Society (1,2); Latin Club (3); Senior Home Room Officer, Secretary (4); Speakers' Bureau (4); Senior Play (4); Tennis (4); Bowling (3,4)

RALPH FRISSELL

Road Show (4); Student Control (4); Speakers' Bureau (4); Motor Club (4); Basketball (1,2); Football (2); Track (1,2,3); Boys' Senior Glee Club (2,3,4); Senior Play (4)



LENORE FORSELL

Girls' Rifle Team (1); Library Monitor (3,4); Student Control (2,3,4)

BETTY FRY

A Cappella Choir (2,3,4); Girls' Junior Glee Club (1); Girls' Senior Glee Club (2); Opera (2,3,4); Student Control (2,3); Motor Club (3,4); Skating Club (4); January Class Officer, Secretary (4)

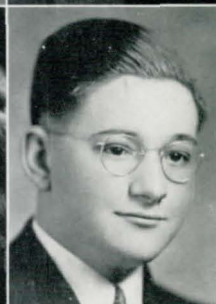
NELLIE FORREST GADEN

National Honor Society

O-Book Staff (4); Lininger Travel Club (1,2,3,4); Road Show (3,4); Junior Honor Society (1,2,3); Press Club (3); Spring Frolic (3); Student Control (3); Junior Red Cross (3,4); Pep Club (4); Girls' Junior Glee Club (1); Senior Play (4); Library Monitor (4)

**LEONARD GOLDSTEIN**

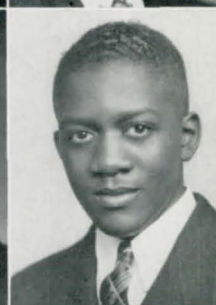
O-Book Staff (4); Register Staff (4); Quill and Scroll (4); State Press Convention (4); Tennis (3,4); Student Control (4); Stamp Club (1,2); Discussion Club (3); Junior Honor Society (1,2); Press Club (4); Library Monitor (4)

**VIRGINIA GALLUP**

Art Contest (4); Le Cercle Franca's (2,3,4); Motor Club (4); Road Show (3,4); Project Committee (2); French Play (2); Girls' Junior Glee Club (1); Spring Frolic (1); Senior Play (4)

HARRY E. GOODBINDER

Register Staff (4); Press Club (4); O-Book Staff (4); Motor Club (1,2,3); Project Committee (1,2,3); Stamp Club (2,3); Treasurer (3); Student Control (3,4); Junior Honor Society (1,2); Forensic Society (2,3,4); Vice President (4); Discussion Club (2,3,4); Sergeant at Arms (2); President (3); Debate Team (2,3); Captain (3); Debate Squad (2,3,4); Boys' Junior Glee Club (3); Central High Players (2,3); Central High Players Plays (3)

**FRANK GASS**

Orchestra (2,3,4); Opera (2,3,4); Regiment (1,2,3); Road Show (1,2,3,4); Stamp Club (2,3)

FOSTER S. GOODLETT JR.

A Cappella Choir (3,4); Boys' Senior Glee Club (2,3); Boys' Junior Glee Club (1); Track (2); Regiment (1,2,3); National Music Supervisors' Conference (3,4); Motor Club (2,3)

**RAY GILLIES**

Stamp Club (2,3,4); R.O.T.C. (4)

MARJORIE GOULD

Register Staff (3,4); Staff Secretary (4); O-Book Staff (4); Press Club (4); Library Monitor (4); Road Show (2,3,4); Student Control (3); Register Representative (1,4); Project Committee (1,2,3); Motor Club (3); Le Cercle Franca's (2,3); Girls' Junior Glee Club (1)

**MAX D. GODDEN**

Los Sabios (3,4); Motor Club (4); O-Club (4); Wrestling (3,4); Chess Club (3,4)

DORIS GRABOW

A Cappella Choir (3,4); Girls' Senior Glee Club (2); Girls' Junior Glee Club (1); Opera (3); Spring Frolic (1,2,3); Motor Club (4); Girl Reserves (1,2); Volleyball (1,2); Mathematics Society (3); Home Economics (4); German Club (1)



DOROTHY ANN GRAHAM

O-Book Staff (4); Student Control (4); Girls' Rifle Team (4); Central Colleens (4); L'Alliance Francais (4); Pep Club (4)

JOHN L. HARRISON JR.

Student Control (4); Track (4); Football (3)



EVELYN R. GREENBAUM

Student Control (3,4); Motor Club (3); Commercial Awards (3,4); Senior Play (4)

MARTHA HARRISON

National Honor Society

Register Staff (4); O-Book Staff (4); Press Club (3,4); Junior Honor Society (1,3); Girls' Junior Glee Club (1); Library Monitor (4); Lininger Travel Club (2,3,4); Central Colleens (2,3); Motor Club (2,3,4); Student Control (2,3,4)



JAMES H. GRIFFITH

O-Book Staff (4); O-Club (3,4), President (4); Track (1,2,3,4); Football (1,2,3,4); Library Monitor (4)

PHYLLIS HARRY

Girls' Senior Glee Club (2); Girls' Junior Glee Club (1); Speakers' Bureau (4); Latin Club (2,3)



JAMES HALL

O-Club (2,3,4), Sergeant at Arms (4); Baseball (2,3,4); Basketball (1,2,3,4); Football (1,2,3,4); Track (1,2,3,4); Boys' Junior Glee Club (1); Boys' Senior Glee Club (2); Commercial Awards (3,4); Motor Club (2,3,4); Regiment (1,2); Student Control (2,4)

AMELIA HARTMAN

National Honor Society

Register Staff (4); Quill and Scroll (4); Junior Honor Society (2,3); Student Control (2,3,4); Central Colleens (2); German Club (3,4)



DORIS HARBERG

A Cappella Choir (4); Opera (4); Road Show (4); Library Monitor (4); Central Colleens (4); Central High Players (4)

ALICE ANN HASCALL

Register Staff, Make-Up Editor (4); O-Book Staff (4); Press Club (3,4); State Press Convention (4); Girls' Junior Glee Club (1); Girls' Senior Glee Club (2); Road Show Program Committee (4); Project Committee (4); Central Colleens (1,2,3,4); Lininger Travel Club (2,3,4), Treasurer (4); Motor Club (2,3,4); Home Room Representative (4); Student Control (2,3,4); Junior Red Cross (3,4), Executive Council (3,4); Library Monitor (4); Senior Play (4); Riflery (4)

MARY FRANCES HASSLER

Register Staff (4); O-Book Staff, Senior Picture Committee Chairman (4); Press Club (4); Library Monitor (4); Lininger Travel Club (1,2,3,4); Central Colleens (1,2,3); Girl Reserves (1); Motor Club (2,3,4); Student Control (2,3,4); Junior Red Cross (3,4); Senior Play (4)



MYLDRED HELLERMANN

Central Colleens (1); Central High Players (4); German Club (3,4); Girls' Rifle Team (4); Motor Club (1,4); Project Committee (3); Senior Play (4); Skating Club (3,4); Student Control (2,3,4); Pep Club (4)

JAMES HAUGH

National Honor Society

R.O.T.C., Colonel (4); C.O.C. (4); Regiment (1,2,3); Engineers, Commander (4); Crack Squad (3); Junior Honor Society (1,2,3); Hi Y (2,3); President (3); Latin Club (2,3); President (3); Library Monitor (4); Monitors' Council (4); Mathematics Society (4); Motor Club, Vice President (3); Road Show (3,4); Young Citizens' Contest (4); O-Club (1,2,3,4); National Athletic Honor Society (2); Basketball (1); Golf (1,2,3,4); Captain (4); Nebraska State High School Golf Champion (2); Latin Awards (3); Register Representative (2); Student Control (2); Project Committee (1,2)

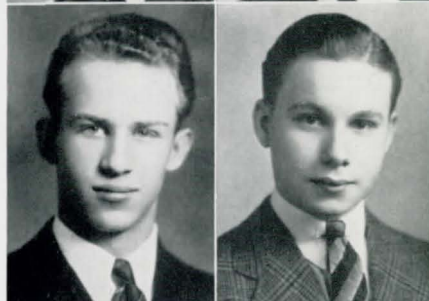


ROBERT HENDERSON

Central Committee (4); Speakers' Bureau (3,4); Motor Club (3); Hi Y (3); Gentlemen's French Club (2,3); Football (1); Basketball (1); Senior Play (4)

ROBERT R. HEFFLINGER

O-Club (2,3,4); Football (1,3,4); Track (2,3,4); Latin Club (3); Motor Club (1,2,3,4); Skating Club (3)

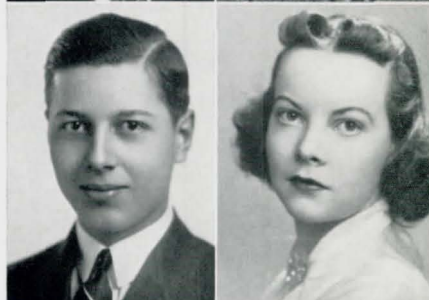


TOM HENSHAW

Regiment (1,2,3); Motor Club (3)

ROBERT F. HEIMROD

A Cappella Choir (2,3,4); Boys' Senior Glee Club (1); Boys' Junior Glee Club (1); Opera (2,3,4); Mathematics Society (4); Motor Club (2); Regiment (1,2); Senior Play (4)



MARY ELIZABETH HIGGINS

Latin Club (2); Central High Players (3); Motor Club (3)

NORMAN R. HELGREN

R.O.T.C., Captain (4); C.O.C. (4); Regiment (1,2,3); Crack Squad (3); A Cappella Choir (2); Boys' Junior Glee Club (1); Boys' Senior Glee Club (1); Opera (2); Central Committee (3,4); Hi Y (2,3,4); Latin Club (2); Library Monitor (4); Mathematics Society (3,4); Treasurer (4); Motor Club (2,3); Register Representative (1); Road Show (3,4); Junior Red Cross (4)



MARGUERITE HILL

Greenwich Villagers (4); Art Contest (4); Girls' Junior Glee Club (1); Motor Club (3,4)





ROBERT E. HINCHCLIFF

A Cappella Choir (3); Boys' Junior Glee Club (1); Boys' Senior Glee Club (2); Motor Club (3,4); Regiment (1,2); Skating Club (3); Speakers' Bureau (4); Student Control (3,4); Track (3)



MARGARET E. HOLMAN

Register Staff (4); Press Club (4); A Cappella Choir (3); Girls' Junior Glee Club (2); Greenwich Villagers (2,3); Library Monitor (4); Linger Travel Club (3,4); Mathematics Society (3); Motor Club (2,3); Opera (2,3); Road Show (1,2,3,4); Senior Home Room Officer (4); Spring Frolic (3,4); Student Control (3,4); Senior Play (4); Pep Club (4); Central Committee (4)



ELIZABETH HOFF

Senior Play (4)



DOLORES V. HOPEWOOD

Central High Players (3,4); Central High Players Plays (3); Commercial Awards (3); Senior Play (3); Student Control (4)



SHIRLEY HOFFMAN

National Honor Society

Senior Home Room Officer, Vice President (4); Junior Honor Society (2); Linger Travel Club (2,3,4), Sergeant at Arms (3), Vice President (4); Central Committee (2,3,4), Treasurer (3,4); Road Show (4); Spring Frolic (4); Student Control (4); Junior Red Cross (4); Motor Club (3); Pep Club (4)



BERNICE HOREIS

Library Monitor (4); Los Sabios (3); Central Colleens (1,2,3); Motor Club (3,4); Student Control (2,3,4); Junior Red Cross (3,4); Pep Club (4)



JOHN L. HOLLAND

Library Monitor (4); Latin Club (2,3,4), President (4)



HELEN HORNSTEIN

A Cappella Choir (3,4); Girls' Junior Glee Club (1); Girls' Senior Glee Club (2); Central Colleens (1,2,3); Central High Players Plays (4); Los Sabios (2,3); National Music Supervisors' Conference (4); Opera (3); Orchestra (3,4), Vice President (4); Road Show (3,4); State Music Contest (3); Student Control (4); Senior Play (4); District Music Contest (3)



DORIS HOLLCROFT

Library Monitor (4); Los Sabios (3); Motor Club (2,3,4); Student Control (3); Junior Red Cross (3)



TERRY HORTON

Library Monitor (4); Football (3,4); Motor Club (2,3,4); Project Committee (1); Skating Club (3); Track (3,4); Intramural Sports (2,3); Senior Play (4)

HOWARD R. HUMPHREYS

R.O.T.C., Captain (4); C.O.C. (4); Regiment (1,2,3); Crack Squad (3); Engineers (3); Library Monitor (4); Los Sabios (3); Hi Y (1,2,3,4); Motor Club (2,3); O-Club (2,3,4); Track (1,2,3,4); Wrestling (4); Basketball (1); Football, Captain (4); Road Show (3)

VIRGINIA B. JENSEN

Latin Club (3); Motor Club (2,4)

CLARK W. HYPSE

A Cappella Choir (3,4); Opera (2,3,4); Boys' Senior Glee Club (2); Boys' Junior Glee Club (1); Motor Club (2); Skating Club (3,4); Speakers' Bureau (2,3,4); Student Control (2,3,4); Football (2,4); Regiment (1,2,3); Chess Team (3)

BURTRON V. JOHNSON

Girls' Junior Glee Club (1); Baseball (1,2); Basketball (1,2); Hockey (1); Spring Frolic (1); Volleyball (1)

ROGER ILIFF

A Cappella Choir (3,4); Boys' Junior Glee Club (1); Boys' Senior Glee Club (2); Opera (2,3,4); Vice President, January Class (4); Track (1,2,3,4); Basketball (1,2)

D. L. JOHNS

Regiment (1,2); Boys' Junior Glee Club (4); Boys' Senior Glee Club (4); Library Monitor (4); Speakers' Bureau (3); Motor Club (4)

ANTHONY R. INSERRA

O-Club (2,3,4); Track (1); Football (1,2,3,4); Athletic Manager (2); Boys' Junior Glee Club (1); Library Monitor (3); Motor Club (3); Regiment (1,2); Register Representative (1); Sergeant at Arms, January Class (4)

JOYCE F. JOHNSON

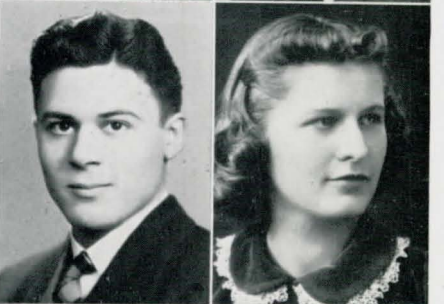
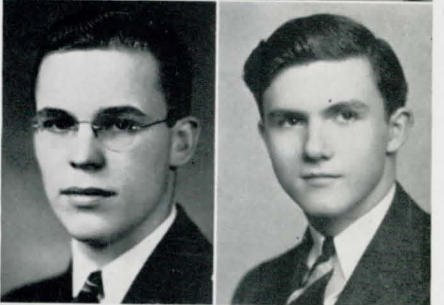
Library Monitor (4); Art Contest (4); Central Colleens (1,2); Pep Club (4); Motor Club (2,3,4); Student Control (4); Junior Red Cross (3); Senior Play (4)

DOROTHY THERESE JENSEN

Central Colleens (4); Los Sabios (4)

LESLIE JOHNSON

R.O.T.C., First Lieutenant (4); C.O.C. (4); Regiment (1,2,3); A Cappella Choir (2,4); Boys' Senior Glee Club (2); Boys' Junior Glee Club (1); Football (1,3,4); Opera (2,4); Road Show (3,4); Senior Home Room Officer, Sergeant at Arms (4); Mathematics Society (3,4); Motor Club (2,3,4); Register Representative (1); Library Monitor (4); Senior Play (4)





WARREN JOHNSON

National Honor Society
Regiment (1); O-Book Staff (4); Art Contest (4); Junior Honor Society (1)

MARJORIE KATZ

A Cappella Choir (2,3,4); Library Monitor (4); Student Control (1,2,3);
Central Colleens (2); Girls' Junior Glee Club (1); Girls' Senior Glee Club (1); Le Cercle Francais (2,3)



ELEANOR JOLLEY

Library Monitor (4); Girls' Junior Glee Club (2); Motor Club (2,3);
Student Control (4); Central Colleens (2)

DOROTHY S. KATZMAN

Central Colleens (1,2,3); Library Monitor (4); Student Control (3,4);
G.A.A. (1); Volleyball (1); Motor Club (4)



SALLY R. JONES

A Cappella Choir (4); Girls' Senior Glee Club (3); Girls' Junior Glee Club (2);
Costumes (3,4); Motor Club (3,4); National Music Supervisors' Conference (4); Student Control (1,2,3,4)

DORSEY KING

R.O.T.C., Second Lieutenant (4); C.O.C. (4); Regiment (1,2,3); Boys' Rifle Team (3); Motor Club (3,4)



HELEN M. JURGENS

Library Monitor (3,4); Student Control (3,4); Motor Club (2,3); German Club (3,4); Spring Frolic (4)

ROBERT KING

Central High Players (2,3,4); Gentlemen's French Club (3); Regiment (2,3); Senior Play (4); Skating Club (2,3,4)



ETHEL A. KADIS

Library Monitor (4); Central Colleens (2,3); Central High Players (2,3,4);
Student Control (2,3); Project Committee (1,2); Motor Club (2,3); Skating Club (3,4); Senior Play (4)

THOMAS L. KIZER

Library Monitor (4); Gentlemen's French Club (3,4); Hi Y (2,3,4);
Motor Club (2,3,4); O-Club (3,4); Road Show Advertising (1,2,3); Regiment (1,2,3); Track (3,4); Basketball (1,2)

LAWRENCE KLEIN

National Honor Society

Junior Honor Society (1,2,3); Library Monitor (4); Los Sabios (3,4); O-Club (4); Senior Home Room Officer, Chairman (4); Baseball (1,2,3,4); Basketball (1,2)

DAVID KRAUS

Register Representative (1); Speakers' Bureau (4); Student Control (2,3); Football (1,2,3,4); Latin Club (3); Motor Club (2,3); Track (2); Intramural Sports (2); Senior Play (4)

EUGENE KNOWLES

Register Staff (4); Golf (3,4); Latin Club (3); O-Club (3,4); Press Club (4); Speakers' Bureau (4); State Press Convention (4); Student Control (3,4); Gentlemen's French Club (3,4)

NORMAN KUKLIN

Student Control (3); Motor Club (2,3); Track (1,2,4); Wrestling (4); Baseball (3,4); Basketball (1,4); Football (1,2,3,4); Boys' Junior Glee Club (2)

JOHN R. KNUDSEN

Central High Players (1,2,3,4); Vice President (3); President (4); Central High Players Plays (2,3,4); Costumes (1); Discussion Club (3); French Play (2); Motor Club (2,3); National Thespians (3,4); Project Committee (2); Regiment (1,2); Register Representative (1); Road Show (2,3,4); Speakers' Bureau (2,3,4); Student Control (1,2,3,4); Boys' Junior Glee Club (1); Senior Play (4)

JOHN KUPPINGER

R.O.T.C., Second Lieutenant (4); C.O.C. (4); Regiment (1,2,3); O-Book Staff (4); German Club (4); Mathematics Society (4); Motor Club (2,3,4); Home Room Representative (4); Register Representative (3); Road Show (4); Road Show Advertising (1,2,3); Senior Play (4)

DOROTHY V. KOEHLER

Student Control (2,3,4); Mathematics Society (2); Motor Club (2,3); Library Monitor (4); Latin Club (2,3); German Club, Sergeant at Arms (4); Girls' Junior Glee Club (1,2); Girls' Senior Glee Club (2,3); Home Economics Club (3)

ERNA KURSAWE

A Cappella Choir (4); Girls' Junior Glee Club (1); Girls' Senior Glee Club (2,3); Opera (4); Junior Honor Society (3); Library Monitor (4); Student Control (2); Skating Club (3,4); German Club (3,4); Vice President (4)

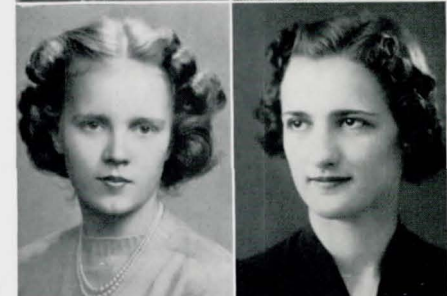
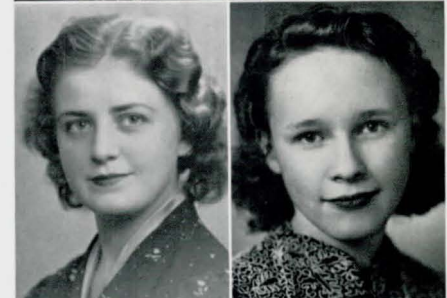
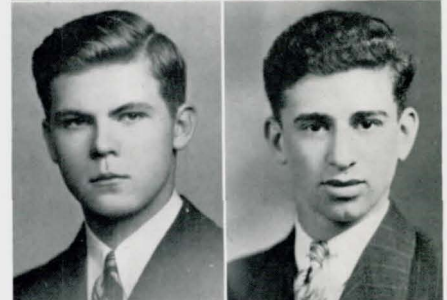
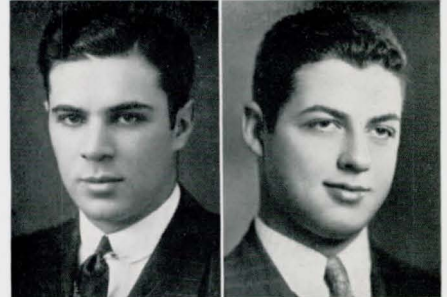
MARY JANE KOPPERUD

National Honor Society

Register Staff (4); Quill and Scroll (4); Junior Honor Society (1,2,3); Library Monitor (4); Central Colleens (2,3,4); Central Committee (2,3,4); Girls' Junior Glee Club (1,2); Girls' Senior Glee Club (2); Lininger Travel Club (2,3,4); Treasurer (3); President (4); Pep Club (4); Junior Red Cross (3,4); Secretary (4); Young Citizens' Contest (4); Student Control (4); State Press Convention (4); Spring Frolic (4); Senior Play (4); Senior Home Room Officer (4); Road Show (2,4); Press Club (3,4); Motor Club (3,4); Monitors' Council (4); Road Show Ticket Committee (4)

BARBARA LAHER

Library Monitor (4); Central High Players (3,4); Central High Players Plays (3); Central Colleens (4); Baseball (1); Basketball (1,2); Girls' Rifle Team (2,4); Hockey (1); Le Cercle Francais (2,3); Skating Club (3,4); Student Control (2,3,4); Volleyball (1); Senior Play (4)





JACK M. LARSEN

A Cappella Choir (2); Boys' Senior Glee Club (1); Boys' Junior Glee Club (1); Opera (2); R.O.T.C., First Lieutenant (4); C.O.C. (4); Regiment (1,2,3); Los Sabios (3); Road Show (4); Motor Club (2); Senior Play (4); Student Control (4); Wrestling (4); Chess Club (3,4)

JANET LIERK

Central Colleens (3); Pep Club (4); Girls' Junior Glee Club (2); Le Cercle Francais (3); Library Monitor (4); Spring Frolic (3); Student Control (4); Titians (1,2,3,4); Junior Red Cross (4); Senior Play (4)



WANDA LAWSON

Library Monitor (4); G.A.A. (1,2,3,4), Vice President (3), President (4); Student Control (4); Baseball (1,2,3,4); Basketball (1,2,3,4); Hockey (1,2); Motor Club (2,3); Tennis (2,3); Volleyball (1,2,3,4); Pep Club (4); Senior Play (4)

EVELYN LIIBBE

Los Sabios (3); Road Show (2,3,4); Student Control (2,3,4); Senior Play (4)



ADELE LEFFLER

O-Book Staff (4); Register Staff (4); State Press Convention (4); Girls' Junior Glee Club (2); Central Colleens (4); Latin Club (2); Motor Club (4); Press Club (4); Student Control (2,4); Student Control Convention (4); Senior Play (4)

HELEN LINCOLN

Central Colleens (1); Girls' Junior Glee Club (1); Register Representative (4); Student Control (2,3,4)



YETTA V. LERNER

National Honor Society

A Cappella Choir (2); Girls' Junior Glee Club (1); Junior Honor Society (1,2,3); Library Monitor (4); Discussion Club (4); Central Colleens (1,3,4); Central High Players (1,2,3); Motor Club (4); Skating Club (3,4); Stamp Club (2); Student Control (4); Swimming (2)

JAMES L. LIPSEY

National Honor Society

A Cappella Choir (2,4); Boys' Junior Glee Club (1); Boys' Senior Glee Club (1); Opera (2,4); Regiment (1,2); Discussion Club (3,4); Gentlemen's French Club (4); Junior Honor Society (3); Latin Club (2); Library Monitor (4); Mathematics Society (4); Register Representative (4); Speakers' Bureau (3,4); Tennis (4); Track (2)



DICK LEE

National Honor Society

R.O.T.C. (4); State Music Contest (3); Hi Y (3); Latin Club (3), President (3); Discussion Club (4); Library Monitor (4); Motor Club (2); Orchestra (1,2,3); Student Control (3); District Music Contest (4); Golf (3,4); Wrestling (4)

DOROTHY RAE LORENZEN

A Cappella Choir (3,4); Girls' Senior Glee Club (2); Girls' Junior Glee Club (1); Central Colleens (3); Central High Players (4); Los Sabios (3); Motor Club (2); Opera (3,4); Student Control (3,4); Home Economics (1)

BYRON R. LOWER

A Cappella Choir (2,3,4); Boys' Junior Glee Club (1); Boys' Senior Glee Club (1); State Music Contest (3); Opera (2,3,4); National Music Supervisors' Conference (3,4); Male Quartet (3); Madrigal Singers (4); Boys' Rifle Team (2); Junior Honor Society (2,3); Library Monitor (4); Los Sabios (3); Motor Club (3,4); Regiment (1,2,3); Stage Crew (1); Student Control (1,2,3,4); Road Show (2,3,4)

MORTON MARGOLIN

Register Staff (3,4); Press Club (3,4); Central High Players (3); Debate Squad (2,3,4); Discussion Club (4); Junior Honor Society (3); Latin Club (2); Library Monitor (3,4); Motor Club (2,3); Register Representative (2); Regiment (1,2,3); Chess Club (3)

CATHERINE LYNCH

Girls' Senior Glee Club (2); Girls' Junior Glee Club (1); Library Monitor (4); Lininger Travel Club (3,4); Motor Club (3); O-Book Staff (4); Opera (2); Road Show (2); Senior Play (4); Student Control (3); Pep Club (4); Junior Red Cross (3); Senior Announcement Committee (4); Le Cercle Francais (3); Central Colleens (3,4), Sergeant at Arms (4)

EUGENE L. MARSH

R.O.T.C., First Lieutenant (4); C.O.C. (4); Regiment (1,2,3); Hi Y (1,2,3,4); Latin Club (2); Motor Club (3,4); Senior Play (4)

IRVIN MADDOX**EVELYN MARSH**

Library Monitor (4); Le Cercle Francais (4); Latin Club (3); Girls' Junior Glee Club (3); Senior Play (4)

BETTY MALLO

Library Monitor (4); Monitors' Council (4); Lininger Travel Club (4); Road Show (3); Student Control (3,4); Spring Frolic (4); Girls' Junior Glee Club (3); Latin Club (2); Central Colleens (3,4); Senior Home Room Officer, Sergeant at Arms (4); Senior Play (4)

BOB MARTIN

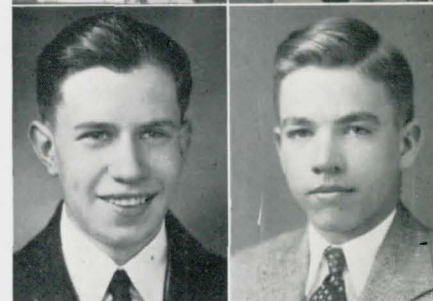
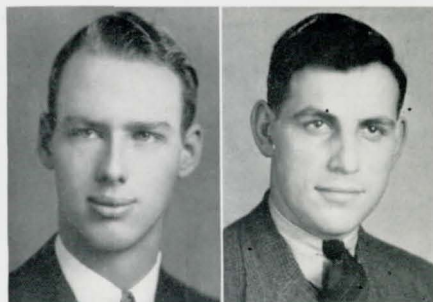
R.O.T.C., First Lieutenant (4); C.O.C. (4); Regiment (1,2,3); Engineers (3); Crack Squad (3); Register Staff (4); Quill and Scroll (4); Press Club (4); State Press Convention (4); Junior Honor Society (1); Library Monitor (4); Mathematics Society (2,3); Motor Club (2,3,4); Road Show (3,4); Basketball (1,2); Cheer Leader (4); Hi Y (2,3,4); Register Representative (1); Senior Play (4)

RICHARD MAPES

Senior Art (4); Student Control (2); Register Representative (3); Motor Club (2)

WILLIAM MARTIN

Speakers' Bureau (3,4); Student Control (2,3)





BERTON MAYER

Central High Players (4); Library Monitor (4); Make-Up (4); Student Control (4); Senior Play (4)

ROBERT C. McDANIEL

O-Club (4); Motor Club (3,4); Student Control (4); Track (3,4); Basketball (3,4); Hi Y (3,4)



JOHN R. MAYHER

Library Monitor (4); Monitors' Council (4); Motor Club (2,3,4); Football (3,4); Hi Y (3,4); Regiment (1,2,3); Senior Play (4)

JOSEPH P. McELLIOTT

Speakers' Bureau (4); O-Club (3,4); Motor Club (2,3,4); Student Control (2); Baseball (3,4); Football (2,3); Wrestling (3,4); Regiment (1,2)



EUGENE McADAMS

Library Monitor (4); Motor Club (3); Boys' Junior Glee Club (3); Boys' Senior Glee Club (4); Stamp Club (2); Student Control (4); Senior Play (4)

HELEN McGINNIS

Library Monitor (4); Junior Honor Society (1,2,3); Girls' Junior Glee Club (1,2); Girls' Senior Glee Club (3); Student Control (2,3,4); Pep Club (4)



PATRICIA McCAFFREY

Student Control (3); Titians (3,4)

WILLIAM C. McINTYRE

R.O.T.C. (4); Regiment (1,2,3); Hi Y (1,2,3,4); Library Monitor (4); Motor Club (3,4); Opera (1); Boys' Junior Glee Club (1); Latin Club (3); Register Representative (3); Road Show (1,4); Student Control (4); Hi Y Conference (4)



MARY JEAN McCARTHY

Register Staff (4); Press Club (3,4); State Press Convention (4); Student Control (4); Road Show Advertising (4); Road Show (4); Motor Club (3,4); Le Cercle Francais (4); Central High Players (3,4); Road Show Secretary (4); Pep Club (4); Senior Play (4)

LOUCILLA McNUTT

Library Monitor (4); Student Control (4); Central Colleens (2,4); Central High Players (2,3,4); Girls' Junior Glee Club (1); Girls' Senior Glee Club (2); Junior Honor Society (3); Girl Reserves (3); Senior Play (4)

GEULAH MEICHES

Library Monitor (4); Junior Honor Society (3); Latin Club (2,3); Commercial Awards (3,4); Central High Players (4); Central Colleens (1,4); Motor Club (3); Spring Frolic (4); Student Control (1,2,3,4); Senior Play (4)

MATTHEW MILLER

Library Monitor (4); German Club (3,4); Motor Club (1,2,3); Student Control (4)

VIRGINIA MENNING

Register Staff (4); O-Book Staff (4); Press Club (4); State Press Convention (4); Quill and Scroll (4); Central Colleens (4); Senior Play (4)

National Honor Society

STANTON MILLER

R.O.T.C., Lieutenant Colonel (4); C.O.C., Treasurer (4); Regiment (1,2,3); Crack Squad (2,3,4), Captain (4); Engineers (4); Central Committee (3,4); Mathematics Society (3); Motor Club (2,3,4); Road Show, Chairman of Ticket Sale (4); Senior Home Room Officer, Vice President (4)

ARDIS MERCHANT

A Cappella Choir (4); Girls' Junior Glee Club (2,3); Girls' Senior Glee Club (3); Library Monitor (4); Central High Players (1,2,3,4); Central Colleens (1); Motor Club (3); National Music Supervisors' Conference (4); Spring Frolic (3); Senior Play (4)

LEO MINARIK

O-Club, Vice President (4); Baseball (3,4); Basketball (3,4); Football (4)

JEAN MEREDITH

Register Staff (4); Library Monitor (4); Monitors' Council (4); G.A.A. (1,2,3,4), Sergeant at Arms (2); Basketball (1,2,3,4); Hockey (1,2,4); Tennis (3,4); Volleyball (1,2,3,4); Girls' Rifle Team (2)

IRENE B. MIROWITZ

Central Colleens (3,4); Central High Players (4); Make-Up (1,2,3); Motor Club (2,3); Press Club (4); Road Show (2,3); Student Control (2,3,4); Senior Play (4)

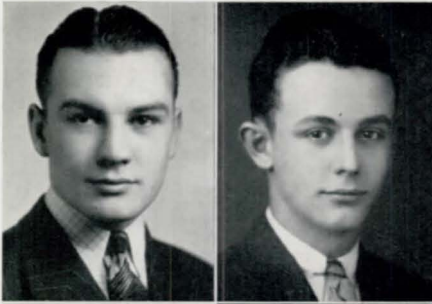
EDWIN G. MILDER

Speakers' Bureau (4); Motor Club (2,3); Regiment (1,2); Senior Play (4)

MILTON D. MOORE

Library Monitor (4); Motor Club (2,3,4); Student Control (4)





JACK MORAN

A Cappella Choir (2,3,4); Boys' Junior Glee Club (1); Boys' Senior Glee Club (1); Baseball (1,3); Basketball (1,3,4); Football (1,2,3,4); O-Club (2,3,4); Stage Crew (4)

JAMES E. MYERS

National Honor Society

A Cappella Choir (4); Boys' Junior Glee Club (4); Junior Honor Society (1,2,3); Library Monitor (3,4); Mathematics Society (3,4); Vice President (4); Motor Club (3); O-Book Staff (4); Road Show, Assistant Manager and Property Crew (4); Stamp Club (2,4); Student Control (3); Costumes (4); Senior Play, Property Crew (4)

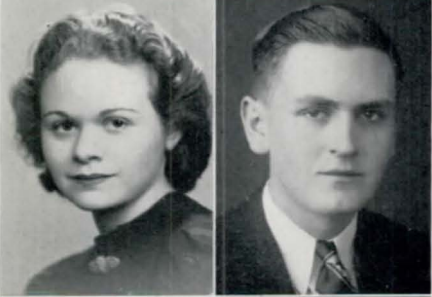


ELIZABETH MORRIS

Library Monitor (4); Los Sabios (3,4), Treasurer (4); Central High Players Plays (3,4); Central High Players (2,4); Central Colleens (3); Motor Club (3); Press Club, Secretary (4); Spring Frolic (3,4); Student Control (2,4); Senior Play (4)

LEONA NARDUCCI

Girl Reserves (4)



ESTHER HELEN MORRIS

Latin Club (2,3); Library Monitor (3,4); Student Control (1,2,3,4); Titians (1,2,3,4)

PAUL B. NEAFUS

A Cappella Choir (2,3,4); Boys' Senior Glee Club (1); Boys' Junior Glee Club (1); Opera (2,3,4); National Music Supervisors' Conference (4); Skating Club (3); Student Control (2,3); Latin Club (2); Hi Y (1); Football (3,4); Track (3,4)



EMILY E. MORTON

A Cappella Choir (3,4); Girls' Junior Glee Club (1,2); Girls' Senior Glee Club (3); Opera (3); Baseball (1,2,3,4); Basketball (1,2,3,4); G.A.A. (1,2,3,4); Girls' Rifle Team (3,4); Hockey (1,2,3); Volleyball (1,2,3,4); Student Control (2,3); Skating Club (3,4); Register Representative (2); Project Committee (1,2,4); Motor Club (2,3); Girl Reserves (1,2,3)

EYVIND S. NEBLE

Register Staff (4); O-Book Staff (4); Press Club (4); State Press Convention (4); O-Club, Secretary (4); Athletic Manager (4); Football (1); Tennis (4); Los Sabios (3); Speakers' Bureau (3); Senior Home Room Officer, Treasurer (4); Regiment (1,2); Senior Play (4)



DOROTHY E. MYERS

National Honor Society

A Cappella Choir (4); Girls' Junior Glee Club (2); Girls' Senior Glee Club (3); National Music Supervisors' Conference (4); Opera (4); Register Staff (4); Quill and Scroll (4); O-Book Staff (4); Press Club (3,4); State Press Convention (4); Central Colleens (1,3,4); German Club (4); Library Monitor (4); Skating Club (3); Spring Frolic (4); Student Control (4); Swimming (1); Motor Club (3)

DONNA NEELY

Register Staff (4); Quill and Scroll (4); O-Book Staff (4); Press Club (4); Library Monitor (4); Le Cercle Francais (4); Lining Travel Club (2,3,4); Central Committee (4); Central Colleens (3); Motor Club (3,4)

ALICE JAYNE NELSON

A Cappella Choir (3,4); Girls' Junior Glee Club (2); Girls' Senior Glee Club (3); Madrigal Singers (4); National Music Supervisors' Conference (4); Opera (4); Road Show (4); Student Control (4); Home Economics (2,3); Motor Club (3)



MELVIN S. NEWMAN

Discussion Club (3,4), Treasurer (4); Road Show (1,2,3,4); Stage Crew (1,2,3,4); Motor Club (2); Regiment (1,2,3)

GLORIA M. NELSEN

Student Control (4); Latin Club (3); Commercial Awards (3,4); Pep Club (4); Central Colleens (1,2); Motor Club (2,3,4); Senior Play (4)



EILEEN NISSEN

A Cappella Choir (4); Girls' Senior Glee Club (3); Girls' Junior Glee Club (2); Opera (3); Road Show (3); Library Monitor (4); Le Cercle Francais (4); Make-Up (3); Central High Players (2,3); Motor Club (2); National Music Supervisors' Conference (4); Senior Play (4)

JACK NELSON

Register Staff (4); O-Book Staff (4); Press Club (4); State Press Convention (4); Latin Club (2); Library Monitor (4); Motor Club (1,2,3,4); Speakers' Bureau (3,4); Student Control (2,3,4); O-Club (4); Track (4); Basketball (2,3); Football (1,3,4); Regiment (1,2); Intramural Sports (2)



EVALYN NIXON

Girls' Junior Glee Club (1); Spring Frolic (1); Student Control (2,4)

CHARLES NESTOR

R.O.T.C., Major (4); C.O.C. (4); Regiment (1,2,3); Engineers (4); Crack Squad (2,3); Boys' Senior Glee Club (2); Boys' Junior Glee Club (1); Central Committee (3,4); Hi Y (1,2,3,4); Vice President (4); Library Monitor (4); Mathematics Society (3,4); Motor Club (2,3); Road Show (2,3,4); Basketball (1); Senior Play (4); Hi Y Conference (3)



MARY NOBLE

Junior Honor Society (1,2); Library Monitor (4); Lininger Travel Club (1,2,3,4); Secretary (4); Central Colleens (3,4); Le Cercle Francais (2); Girls' Junior Glee Club (1); Junior Red Cross (3); Student Control (2,3); Motor Club (1,2,3); L'Alliance Francais (3); Spring Frolic (4); Art Contest (3); Pep Club (4)

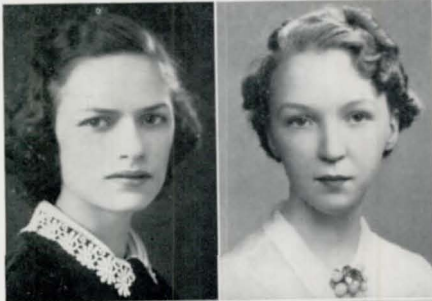
MARY ELLEN NEWMAN

Road Show (3); Opera, Property Chairman (4); Student Control (3,4)



MARY HELEN NORTH

Library Monitor (4); Spring Frolic (4); Road Show (2,3); Lininger Travel Club (4); Pep Club (4); Student Control (4); Latin Club (1,2); Central Colleens (1,2); Motor Club (3,4); State Press Convention (4)



IRMA NOTHNAGEL

Le Cercle Francais (4); German Club (3,4), President (4); Commercial Awards (3); Central Colleens (3); Student Control (2,3,4); Make-Up (4); Home Economics Club (1,2), Treasurer (2); Motor Club (3,4); Spring Frolic (4); Senior Play (4)

ROBERTA O'HARRA

National Honor Society

Junior Honor Society (3); O-Book Staff (4); Le Cercle Francais (4); Library Monitor (4); Pep Club (4); Art Contest (4); Greenwich Villagers (2,3,4); Student Control (2,3,4); Central Colleens (2); Senior Art (4)



DOROTHY M. NYGAARD

Library Monitor (4); Student Control (2,3,4)

MARIE HELEN O'KEEFE

Student Control (3,4); Make-Up (3)



WILLIAM J. O'BRIEN

Basketball (1,2,3,4); O-Club (4); German Club (3,4); Orchestra (1,2,3); Senior Home Room Officer, Sergeant at Arms (4); Student Control (4); Track (4)

ELDYNE OLMSTEAD

Library Monitor (4); Le Cercle Francais (4); Skating Club (4); Student Control (2,3,4); Latin Club (3); Girls' Junior Glee Club (3); G.A.A. (1)



GLORIA ODORISIO

National Honor Society

A Cappella Choir (2,3,4); Girls' Junior Glee Club (1); Opera (2,3,4); Madrigal Singers (4); National Music Supervisors' Conference (3,4); Junior Honor Society (1,2,3); Library Monitor (4); Titians (1,2,3,4); Vice President (4); O-Book Staff (4); Road Show (3,4); Student Control (1,2,3,4); Latin Club (2,3); Commercial Awards (3); Pep Club (4); Spring Frolic (4)

RALPH OPPIDO

Library Monitor (4); Student Control (4); Motor Club (1,2); Regiment (1)



PATRICIA O'HANLON

Library Monitor (4); Student Control (4); Register Representative (4); Le Cercle Francais (2,3); Central Colleens (1); Titians (1); Motor Club (2); French Play (2); Junior Red Cross (3,4); Senior Play (4)

DON OSBORN

National Honor Society

R.O.T.C., First Lieutenant (4); C.O.C. (4); Regiment (1,2,3); Engineers (3); Junior Honor Society (3); Library Monitor (4); Senior Home Room Officer, Vice President (4); Junior Red Cross (4); Boys' Junior Glee Club (1); Boys' Senior Glee Club (1); Latin Club (1); Motor Club (2); O-Club (4); Football (3,4); Hi Y (1,2,3,4), President (4)

HERBERT L. OSBORNE

R.O.T.C., Captain (4); C.O.C. (4); Regiment (1,2,3); Crack Squad (3); Boys' Junior Glee Club (1); Boys' Senior Glee Club (2); O-Book Staff (4); Press Club (3); Register Representative (1,2,3); Road Show (1,3,4); Gentlemen's French Club (2,3); Latin Club (1,2); Sergeant at Arms (1); Mathematics Society (3,4); Motor Club (2,3,4); Junior Red Cross (4); Loquax Staff (2); Hi Y (1,2,3,4); Secretary (2); Tennis (4); Track (3); Senior Play (4)

EVELYN PAEPER

National Honor Society

A Cappella Choir (3,4); Girls' Senior Glee Club (2); Girls' Junior Glee Club (2); Opera (3); Road Show (3); Junior Honor Society (1,2,3); National Music Supervisors' Conference (3); Register Staff (4); O-Book Staff (4); Press Club (3,4); Central Colleens (3,4); Secretary (4); Greenwich Villagers (2,3,4); President (4); Art Contest (2,4); Senior Art (4); Spring Frolic (4); G.A.A. (1); Library Monitor (4); Student Control (4); Motor Club (3,4); Central High Players (4); Senior Play (4)

FRANCES OSOFF

O-Book Staff (4); Register Staff, Advertising Manager (4); State Press Convention (4); Press Club (3,4); Library Monitor (4); Spring Frolic (4); Motor Club (4); Central Colleens (1,2,3); Commercial Awards (3); Girls' Junior Glee Club (1); Student Control (1,2,3); Junior Red Cross (4); Senior Play (4)

WILLIAM PANGLE

R.O.T.C., First Lieutenant (4); Regiment (1,2,3); Engineers (3); Press Club (3,4); A Cappella Choir (2,3,4); Boys' Junior Glee Club (1); Opera (2,3); Road Show (1,2,3); Latin Club (3); Senior Home Room Officer (4); Basketball (1); Football (1,2,3,4); Track (1); O-Club (2,3,4); Library Monitor (4); Motor Club (3); Senior Play (4); C.O.C. (4)

HENRY OTTO

R.O.T.C. (4); Regiment (1,2,3); German Club (3,4)

HENRY PATTON

Register Staff (4); A Cappella Choir (2,3,4); Boys' Junior Glee Club (1); Boys' Senior Glee Club (1,2); Opera (2,3); Central High Players (4); Central High Players Plays (4); Los Sabios (2); Regiment (1,2); Road Show (1,4); Speakers' Bureau (4); Track (1); Wrestling (4); Football (1,2,3); Senior Play (4); O-Club (2,3,4)

ROD OVERHOLT

R.O.T.C., Second Lieutenant (4); C.O.C. (4); Regiment (1,2,3); Register Staff (4); Press Club (4); Hi Y (4); Bowling (4); Latin Club (3); Student Control (4)

JANE PAUL

Library Monitor (4); Motor Club (4); Basketball (1,2,3); G.A.A. (1,2); Volleyball (1,2,3); Student Control (3)

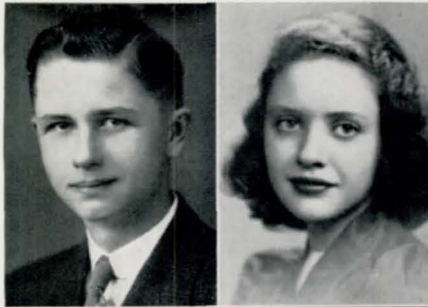
ALICE NAOMI OVINGTON

A Cappella Choir (3,4); Girls' Senior Glee Club (2); Girls' Junior Glee Club (1); Opera (3,4); Central Colleens (3,4); Central High Players (1, 4); Latin Club (2); Library Monitor (4); Mathematics Society (3); Motor Club (4); Student Control (3); G.A.A. (1)

FRED PEGLER

Central High Players (4); Central High Players Play (4); Debate Team (4); Orchestra (3); Speakers' Bureau (4); Student Control (4); Regiment (1,2); Senior Play (4)



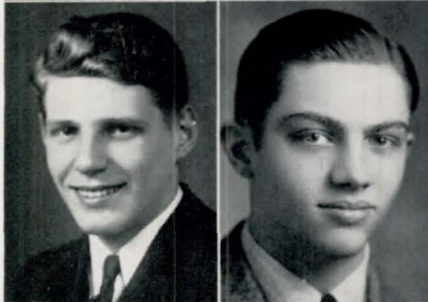


JOHN W. PETERSON

Library Monitor (4); Motor Club (3); Register Representative (2); Junior Honor Society (1); Project Committee (1,2), President (1,2); Student Control (1,2,3)

MARY MARGARET PIPER

O-Book Staff (4); Central Colleens (3,4), Sergeant at Arms (4); Greenwich Villagers (2,3,4), Vice President (3); Senior Play (4); Speakers' Bureau (4); Spring Frolic (4); Student Control (3,4); Red Cross (4); Motor Club (4); Art Contest (4)

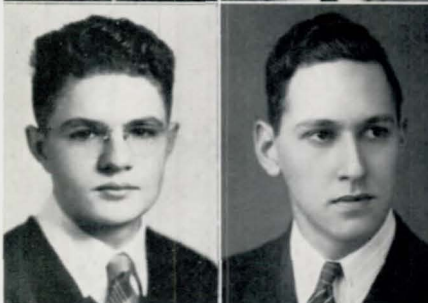


ERNEST C. PETERSON

National Honor Society
Junior Honor Society (1,2,3); Latin Club (3); Library Monitor (4); Motor Club (3); Register Representative (2); Student Control (3); Track (3,4); Basketball (3)

TOM R. PORTER

Register Staff (3); Press Club (3); Central High Players (3,4); Central High Players Plays (3,4); Hi Y (1); Make-Up (4); Motor Club (4); National Thespians (3,4); Opera (2); Boys' Junior Glee Club (2); Boys' Senior Glee Club (2); Register Representative (4); Stage Crew (3,4); Stamp Club (3); Senior Play (4); Project Committee (2)



WILLIAM A. PETTENGILL

Central High Players (3,4); Central High Players Plays (3); Los Sabios (2,3); Motor Club (3); Regiment (1,2); Student Control (4); Senior Play (4)

DAVID R. POSLEY

Boys' Junior Glee Club (1); Boys' Senior Glee Club (2); Opera (2); Regiment (1,2); Student Control (1,2)



MARGARET PICKERING

Register Staff (4); Press Club (4); State Press Convention (4); Student Control (4); Le Cercle Francais (4)

PEYTON T. PRATT

National Honor Society
Central Committee (2,3,4); Junior Honor Society (1,2,3); Library Monitor (4); Latin Club (2); Hi Y (1,2); Mathematics Society (2); Motor Club, Representative (4); Regiment (1,2); O-Club (4); Bowling (4); Football (1); Golf (3,4)



PATRICIA SUZANNE PICOTTE

Baseball (1,2,3,4); Basketball (1,2,3,4); Volleyball (1,2,3,4); G.A.A. (1,2,3,4); Hockey (1,2,3); Student Control (2,4); Motor Club (3); Pep Club (4); Central High Players (1); Girls' Rifle Team (1,4)

LOIS PRIESMAN

Central Colleens (4); Library Monitor (4); Student Control (3,4); Pep Club (4); Skating Club (3,4)

JACK QUINN

Library Monitor (4); O-Club (4); Track (3); Football (1,3,4); Latin Club (2); Motor Club (3,4); Student Control (2); Register Representative (3)

ROBERT B. RIMMERMAN

Regiment (1,2,3); Student Control (2,3,4); Motor Club (2,3)

MARY LOUISE RAAPKE

O-Book Staff (4); Road Show Advertising (3,4); Central Colleens (4); Art Contest (2)

CLIFFORD RING

Road Show Advertising (3,4); Senior Art (4); Library Monitor (4); Register Representative (3); Student Control (3); Motor Club (4)

BILL RANDALL

Mathematics Society (2,3); Motor Club (4); Road Show (2,3); Stamp Club (1); Student Control (1); Latin Club (2,3); Hi Y (2,3); German Club (4); Forensic Society (3); Debate Team (2,3); Debate Squad (2,3); Boys' Rifle Team (2,3); Baseball (2,3); Junior Honor Society (1); Tennis (3); Track (2)

National Honor Society

BERNICE ROBINSON

A Cappella Choir (3,4); National Music Supervisors' Conference (3); Girls' Senior Glee Club (2); Girls' Junior Glee Club (1); Opera (3); Le Cercle Francais (4); Student Control Convention (4); Student Control (1,2,3,4); Titians (1,2,3,4); President (4); Library Monitor (4); Central Colleens (1,2); Pep Club (4); Spring Frolic (3,4)

RICHARD K. REED

O-Book Staff (4); Register Staff (4); State Press Convention (4); Senior Play (4); Library Monitor (4); Regiment (1,2); French Play (1); Gentlemen's French Club (1,2,3); Motor Club (2,3,4); Register Representative (1); Hi Y (1,2,3); Vice President (2); Junior Red Cross (3); Basketball (3); Press Club (4); Intramural Sports (2); Bowling (4)

GERTRUDE ROCCAFORTE

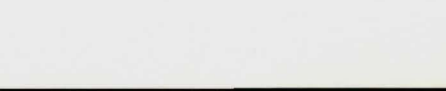
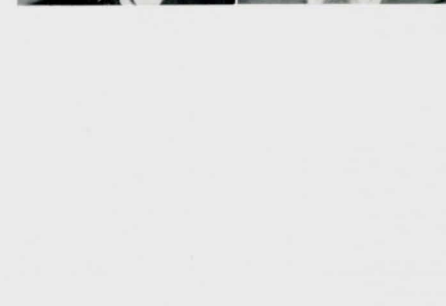
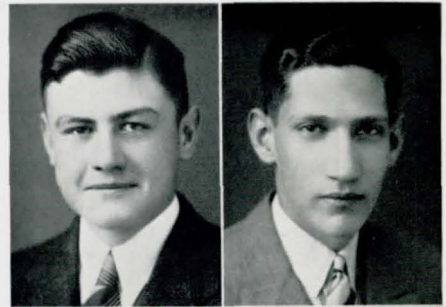
A Cappella Choir (3); Girls' Senior Glee Club (2); Girls' Junior Glee Club (1); Student Control (3,4); Central Colleens (1); Motor Club (4)

JAMES R. RICHARDSON

R.O.T.C., First Lieutenant (4); C.O.C. (4); Regiment (1,2,3); Junior Honor Society (3); Library Monitor (4); Mathematics Society (3); Senior Announcement Committee (4); Senior Play (4); Motor Club (3); Intramural Sports (3); Hi Y (3); Track (3,4)

HOMER ROGERS

R.O.T.C., Second Lieutenant (4); C.O.C. (4); Regiment (1,2,3); Register Staff (4); O-Book Staff (4); State Press Convention (4); Road Show (3); Crack Squad (3); Los Sabios (3); Road Show Advertising (2); Speakers' Bureau (2,3); Central Committee (3,4); Motor Club (2,3,4); Register Representative (3,4); Hi Y (1,2,3,4); Cheer Leader (4); Senior Play (4)





JOSEPH A. ROGERS

Regiment (1,2); Project Committee (2); Register Representative (3); Motor Club (3); Central High Players (1)

MIRIAM RUBNITZ

O-Book Staff (4); Register Staff (4); Press Club (3,4); Motor Club (4); Library Monitor (4); Student Control (3); Le Cercle Francais (3,4); Central Colleens (1,2,3,4); Red Cross (4); Girls' Junior Glee Club (1,2); Latin Club (2); Junior Honor Society (1); Pep Club (4); Senior Play (4)



WILLIAM ROHAN

O-Club (4); Track (3,4); Football (2)

RUSSEL N. RUDD

Track (4); Regiment (1,2); Motor Club (2,3)



EUGENE A. ROSE

R.O.T.C., First Lieutenant and Adjutant (4); C.O.C. (4); Regiment (1,2,3); Road Show Advertising (1,2,3); Library Monitor (4); Mathematics Society (3,4); Motor Club (2,3,4); Hi Y (2,3,4); Central Committee (4)

LORETTA RYCHLY

O-Book Staff (4); Central Colleens (1,2,3,4); Art Contest (4); Greenwich Villagers (2,3,4), Treasurer (4); Library Monitor (4); Monitors' Council (4); Pep Club (4); Student Control (2); Girl Reserves (1)

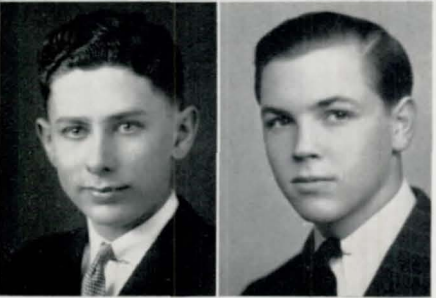


HOWARD ROSENBLUM

National Honor Society
R.O.T.C., Second Lieutenant and Staff (4); C.O.C. (4); Regiment (1,2,3); Junior Honor Society (1,2,3); Regional Music Contest (4); O-Book Staff (4); Chairman Senior Announcement Committee (4); Senior Play, Business Manager (4); Road Show (1,3,4); Central High Players (3,4); Central High Players Plays (3,4); Speakers' Bureau (4); Motor Club (2,3,4); Orchestra (1); Hi Y (4); Senior Play (4)

HARRIET L. SALZMAN

Student Control (4); Spring Frolic (4); Motor Club (3,4); Senior Play (4)



RALPH J. RUBENSTEIN

Los Sabios (4); Latin Club (3); Skating Club (3,4); Student Control (3); Motor Club (2,3); Speakers' Bureau (4); Hi Y (4); Golf (4); Bowling League (4)

WILLIAM SAMPLE

Central Committee (2,3,4); French Play (2,3); Gentlemen's French Club (2,3,4); Hi Y (1,2,3,4); Motor Club (3,4); Regiment (1,2); Track (3)

HENRY J. SANDERS

Boys' Junior Glee Club (3); Football (1,2); Hi Y (1,2,3); Motor Club (2,3); Track (2,3); Intramural Sports (2,3)

RHEA SCHNEIDER

Student Control (2); Skating Club (3); Los Sabios (3); Girls' Junior Glee Club (1); Girls' Senior Glee Club (2); Girl Reserves (1,2,3); Motor Club (3)

BETTE SATRAPA

Register Staff (4); Press Club (4); O-Book Staff (4); State Press Convention (4); Register Representative (4); Lininger Travel Club (4); Latin Club (2); Central Colleens (4); Senior Play (4); Motor Club (4)

BETTY SCHOLDER

Library Monitor (4); Lininger Travel Club (3,4); Skating Club (4); Student Control (2,3,4); Costumes (2); Girls' Junior Glee Club (1); Girls' Senior Glee Club (2)

LOUISE M. SAYLAN

Spring Frolic (1); Student Control (1); Motor Club (1,2,3); G.A.A. (1,2); Girls' Junior Glee Club (1); Home Economics (3,4); Library Monitor (4)

HOWARD P. SCOTT

Football (2,3,4); O-Club, Treasurer (4); Central High Players (3); Latin Club (2); Motor Club (3,4); Press Club (3); Register Representative (3); Library Monitor (4); Senior Play (4); Speakers' Bureau (4)

MELCHORA L. SCARPELLO

Los Sabios (3); Motor Club (1)

RICHARD SELBY

R.O.T.C., First Lieutenant, Battalion Quartermaster (4); C.O.C. (4); Regiment (1,2,3); Register Staff (4); Register Representative (2); Press Club (4); State Press Convention (4); Library Monitor (4); French Play (1); Gentlemen's French Club (1,2,3); Hi Y (1,2,3); Treasurer (2); O-Book Staff (4); Motor Club (2,3,4); Project Committee (1); Road Show (4); Senior Home Room Officer (4); Senior Play (4); Student Control (4); Road Show Advertising (1,2,3); Boule (1)

PAUL E. SCHAPIRO

Central High Players (1,2); Stamp Club (2); Student Control (2,3,4); Senior Play (4)

JOSEPHINE A. SGROI

Orchestra (1,2,3); Motor Club (3); Student Control (1,4); Volleyball (1,2,3,4); Hockey (1,2,3); Girls' Rifle Team (2,4); G.A.A. (1,2,3,4)





ESTHER R. SHAPIRO

Student Control (4); Make-Up (2,3); Junior Honor Society (3); Greenwich Villagers (3,4); Central Colleens (2,3)

DIXIE HELEN SINGLETON

Girl Reserves (3,4); Motor Club (3); Student Control (2); Senior Play (4)



MORRIS J. SHAPIRO

R.O.T.C. (4); Regiment (1,2,3); Student Control (3,4); Basketball (2); Football (1); Latin Club (2); Motor Club (2,3); Project Committee (1); Stamp Club (2); Boule Club (1); Senior Play (4)

ROBERT A. SLABAUGH

A Cappella Choir (3); Boys' Junior Glee Club (1); Boys' Senior Glee Club (2); Hi Y (1,2,3); President (3); Motor Club (2,3); Regiment (1,2); Speakers' Bureau (3,4)



ANABEL SHOTWELL

Press Club (4); Register Staff (4); Road Show (2,3,4); Le Cercle Francais (2,3,4); President (4); Senior Play (4); Central High Players (4); Central High Players Play (4); Motor Club (2,3,4)

GEORGE H. SLEDD

Basketball (1); Football (1); Track (1,3); Speakers' Bureau (3); Motor Club (3,4); Boys' Junior Glee Club (2)

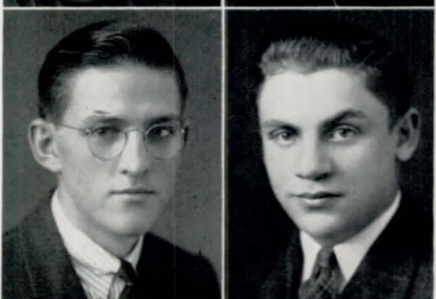


HARRIET SIMS

Senior Play (4)

BETTY ANN SLOBOTH

Register Staff (4); Press Club (3); Register Representative (3); Library Monitor (4); Central High Players (4); Discussion Club (4); Girl Reserves (4); Latin Club (3); Make-Up (4); Skating Club (3,4); Stamp Club (4); Student Control (4); Senior Play (4)



GILBERT SINDELAR

Commercial Awards (3)

HAROLD W. SLOSBURG

National Honor Society
 Register Staff (3,4); Editor-in-Chief (4); Junior Honor Society (1,2,3); Quill and Scroll (3,4); Press Club (3,4); O-Book Staff (4); State Press Convention (3,4); Register Representative (2,3); Monitors' Council, Chairman (4); Central High Players (2,3); Sergeant at Arms (3); Central High Players Plays (3,4); Gentlemen's French Club (1,2,3); Secretary (2); Sergeant at Arms (3); Wrestling (2,3); Track (2); Central Committee (2,3,4); Library Monitor (4); Red Cross Inter-City Council (2,3); Speakers' Bureau (2,3); French Play (1); Mathematics Society (4); Motor Club (3,4); Commercial Awards (3,4)

GERALDINE SMITH

Girls' Junior Glee Club (3); Library Monitor (4); Motor Club (3,4);
Speakers' Bureau (4); Student Control (4)

RALPH STACEY

Motor Club (1,2,3)

ETTA SOIREF

National Honor Society

Spring Frolic (4); Student Control (1,2,3,4); Pep Club (4); Library Mon-
itor (4); Latin Club (2,3,4); Latin Awards (3); Junior Honor Society
(1,2,3); Commercial Awards (3,4); Central Colleens (1,4)

JOSEPH STANDEVEN

R.O.T.C., Second Lieutenant (4); C.O.C. (4); Regiment (1,2,3); Library
Monitor (4); Latin Club (3); Boys' Junior Glee Club (1); Boys' Senior
Glee Club (2); Road Show (2,4); Motor Club (2)

ARLENE SOLOMON

Register Staff (3,4); Press Club (3,4); Quill and Scroll (3,4); O-Book
Staff (4); Senior Play (4); Speakers' Bureau (3); Make-Up (3); Motor
Club (2,3,4); Library Monitor (4); Discussion Club (4); Central Colleens
(2,3); Central High Players (1,2,3,4); Central High Players Play (4);
Road Show (4)

ROSALIND H. STAVE

Student Control (2,3,4); Titians (2,3,4)

RUTH SOMBERG

Student Control (3); Motor Club (2,3); Red Cross (4); Home Economics
Club (1); Central Colleens (1,2,3,4)

ARNOLD STEFFEN

A Cappella Choir (2); Boys' Junior Glee Club (1); German Club (3);
Opera (2); Skating Club (3); Register Representative (2)

SHIRLEY SPAR

Register Representative (4); Skating Club (3); Student Control (3,4);
Library Monitor (4); Le Cercle Francais (4); Home Economics Club (3)

GENEVIEVE STEIN

Register Staff (4); Press Club (3,4); Student Control (3); Motor Club
(2,3); Library Monitor (4); Le Cercle Francais (2,3); Commercial
Awards (3); Pep Club (4); Central Colleens (1,2); Red Cross (4)





RUTH S. STEIN

Central Colleens (1,3); Central High Players (1,2,3); Library Monitor (4); Skating Club (3,4); Stamp Club (2); Swimming (1)

ESTHER PATRICIA STORIE

A Cappella Choir (4); Girls' Senior Glee Club (3); National Music Supervisors' Conference (4); Central Colleens (4); Central High Players (3); Le Cercle Francais (4)



JUNE ELLEN STEINERT

National Honor Society
A Cappella Choir (3,4); National Music Supervisors' Conference (4); Opera (3,4); O-Book Staff (4); Central Colleens (3); Girls' Junior Glee Club (1); Girls' Senior Glee Club (2); Junior Honor Society (1,2,3); Latin Club (2); Le Cercle Francais (4); Library Monitor (4); Lininger Travel Club (3,4); Make-Up (3,4); Motor Club (2,3); L'Alliance Francais (3); Student Control (2); Red Cross (3); Senior Play (4)

ROLAND STRUCK

Library Monitor (4); Los Sabios (3); Stamp Club (3)



ROBERT STELZER

R.O.T.C., Captain (4); C.O.C. (4); Regiment (1,2,3); Crack Squad (3); Library Monitor (4); O-Book Staff (4); Central Committee (3,4); Cheer Leader (4); Hi Y (2,3,4); Los Sabios (2); Road Show (3,4); Road Show Advertising (1,2,3); Junior Red Cross (3,4); Sergeant at Arms (4); Red Cross Council (4); Motor Club (2,3,4)

VIRGINIA STUHT

Register Staff (4); Press Club (3,4); O-Book Staff (4); State Press Convention (4); Student Control (2,3); Motor Club (2,3,4); Le Cercle Francais (3,4); Lininger Travel Club (2,3); Central Committee (4)



LUCILLE STEPANEK

National Honor Society
Register Staff (4); Quill and Scroll (4); Central Colleens (2,3); Commercial Awards (3); Home Economics Club (2); Junior Honor Society (1); Latin Club (3); Library Monitor (4); Make-Up (4); Motor Club (3,4); Press Club (4); Senior Play (4); Student Control (3,4)

ARTHUR STURGES

Skating Club (4); Chess Club (3)



EFFIE LORRAINE STOCKMAN

National Honor Society
Register Staff (4); Quill and Scroll (4); Press Club (3,4); O-Book Staff (4); Senior Play (4); State Press Convention (4); Student Control (2,3,4); Spring Frolic (3,4); Motor Club (3,4); Make-Up (2); Central Colleens (3,4); Central High Players (2); Junior Honor Society (1,2); Library Monitor (4); Lininger Travel Club (3,4); Pep Club (4)

PAULINE SWENGIL

Student Control (1,2,3,4); Skating Club (1,2); Spring Frolic (4)

MELVIN TANNENBAUM

R.O.T.C., First Lieutenant (4); C.O.C. (4); Regiment (1,2,3); Library Monitor (4); Gentlemen's French Club (2); Hi Y (3); Motor Club (1,2,3); Project Committee (1,2); Road Show (4); Stamp Club (1,2,3,4); Treasurer (3); President (4); Student Control (3,4); Junior Red Cross (3)

DICK TOBIAS

A Cappella Choir (4); Boys' Senior Glee Club (4); Opera (4); Student Control (4)

WALTER B. TAYLOR JR.

R.O.T.C., First Lieutenant (4); C.O.C. (4); Regiment (1,2,3); A Cappella Choir (2,3,4); Boys' Senior Glee Club (2); Boys' Junior Glee Club (1); Opera (2,3,4); National Music Supervisors' Conference (3); Motor Club (4); Boys' Rifle Team (3,4)

JANET TRAUB

O-Book Staff (4); Junior Honor Society (2,3); Library Monitor (4); Le Cercle Francais (4); Greenwich Villagers (3,4); Junior Red Cross (3,4); Central Colleens (2,3,4); Art Contest (4); Girls' Junior Glee Club (1); Girls' Senior Glee Club (2); Motor Club (2,3,4); Student Control (2,3,4); Senior Play (4);

ANN THOMAS

Library Monitor (4); Lininger Travel Club (2,3,4); Pep Club (4); Central Committee (2,3,4); Motor Club (3); Student Control (4); Road Show (2,4)

MARY LOU TROUGHTON

Register Staff (4); Quill and Scroll (4); O-Book Staff (4); Press Club (4); State Press Convention (4); National Press Convention (4); Motor Club (2,3,4); Student Control (4); Tennis (2,4); Volleyball (2); Hockey (2); Baseball (2); Basketball (2); Senior Play (4)

RUTH MARIE THORUP

A Cappella Choir (3,4); Girls' Senior Glee Club (2); Girls' Junior Glee Club (1); Opera (3); Junior Honor Society (3); Library Monitor (4); German Club (3,4); Latin Club (2); Motor Club (3); Student Control (3,4)

CATHERINE TUNISON

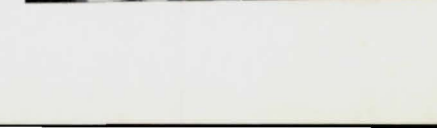
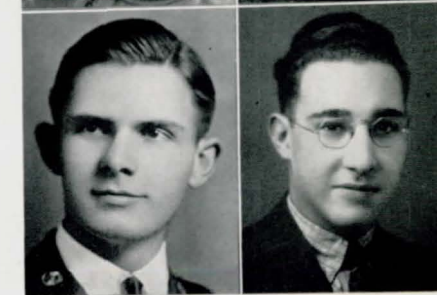
National Honor Society
A Cappella Choir (2,3,4); Girls' Senior Glee Club (1); Girls' Junior Glee Club (1); Opera (3,4); National Music Supervisors' Conference (3,4); Madrigal Singers (4); State Music Contest (3); Central Committee (4); German Club (4); Library Monitor (4); Lininger Travel Club (3); Road Show (3,4); Spring Frolic (1,2,3); Student Control (2,3)

GEORGE A. TOBIAS

R.O.T.C., First Lieutenant (4); C.O.C. (4); Regiment (1,2,3); Library Monitor (4); Mathematics Society (4); Stamp Club (4); Latin Club (3); Senior Play (4)

STANLEY TURKEL

Register Staff (3); Press Club (3,4); Register Representative (3); Library Monitor (4); Discussion Club (4); Orchestra (1,2,3,4); Vice President (4); State Music Contest (3); Chess Club (4); Motor Club (2); Latin Club (2,3); Sergeant at Arms (3); Gentlemen's French Club (3)



**HOWARD G. TURNER**

National Honor Society
 R.O.T.C., Captain and Personnel Adjutant (4); C.O.C. (4); Regiment (1, 2,3); Register Staff (3,4), Make-Up Editor (3), Managing Editor (4); Press Club (3,4), Treasurer (3); State Press Convention (4); Quill and Scroll (3,4); National Press Convention (4); Junior Honor Society (1,3); Library Monitor (4); Mathematics Society (3,4), Vice President (4); Boys' Rifle Team (3); Hi Y (1); O-Book Circulation (3); Senior Play (4); Road Show Program Committee (4); Senior Play Program and Publicity Chairman (4)

RUTH VASKO

Library Monitor (4); Le Cercle Francais (3); Road Show (3); Student Control (3,4); Senior Play (4)

**FRANK TWISS**

R.O.T.C., Sergeant (4); Regiment (1,2,3); A Cappella Choir (2,3,4); Boys' Senior Glee Club (1); Boys' Junior Glee Club (1); Opera (2,3,4); Regional Music Contest (3); Motor Club (3); Hi Y (3,4)

LYLE WADDLE

Baseball (2,3); Basketball (2)

**BETTY JEAN TYLER**

Library Monitor (3,4); Junior Honor Society (2,3); Motor Club (3); G.A. A. (1,2); Baseball (1,2); Basketball (1); Volleyball (1)

LORNA WAGNER**TOM UREN**

R.O.T.C., Second Lieutenant (4); C.O.C. (4); Regiment (1,2,3); Library Monitor (4); Road Show (4); Speakers' Bureau (4); Motor Club (4); Mathematics Society (3); O-Club (3,4); Golf (3,4), Captain (4); Hi Y (3,4), Treasurer (3,4); Football (1); Basketball (1)

JAMES R. WALDIE

O-Book Staff (4); Library Monitor (4); Speakers' Bureau (4); Stamp Club (3); Latin Club (2,3), Sergeant at Arms (3); Regiment (1,2); Register Representative (2); Motor Club (3)

**BETTE ANNE URQUHART**

Library Monitor (4); Le Cercle Francais (4); Los Sabios (3); Motor Club (3,4); Student Control (3,4); Senior Play (4)

EVELYN WALDMAN

Library Monitor (4); Motor Club (4); Skating Club (4); Commercial Awards (4); Student Control (2,3,4); Latin Club (2); Orchestra (2); Central Colleens (1); G.A.A. (1); Senior Play (4); Swimming (1,2)

GEORGE L. WALES JR.

National Honor Society
R.O.T.C., Major (4); C.O.C. (4); Regiment (1,2,3); Crack Squad (3);
Engineers (4); Junior Honor Society (1,2,3); Library Monitor (4); Mon-
itors' Council (4); Road Show (4); Speakers' Bureau (4); Young Citizens'
Contest (4); Mathematics Society (3,4); Motor Club (3); Cheer Leader
(4); Basketball (1); Senior Home Room Chairman (4); Senior Play (4)

CHARLES WEISS

Basketball (1,2); Football (1,2); Hi Y (1); Motor Club (2,3,4); Register
Representative (1); Stamp Club (3); Track (1); Intramural
Sports (1,2)

JANE M. WALRATH

Motor Club (4)

DOROTHY WHEELER

National Honor Society
Junior Honor Society (3); Library Monitor (4); Los Sabios (3,4), Secre-
tary (4); Register Representative (3,4); Student Control (3,4); Le
Cercle Francais (4); Pep Club (4); Spanish Paper, Editor (4)

CATHERINE WEAKLAND

Library Monitor (4); Motor Club (4)

SYLVIA WHITE

Central Colleens (1,2,3); Discussion Club (4); Junior Red Cross (4);
Home Economics Club (3,4); Le Cercle Francais (1,2); French Play (1);
Student Control (3)

ANNE WEAVER

A Cappella Choir (2); Girls' Senior Glee Club (1); Girls' Junior Glee Club
(1); Opera (2); Road Show (2,4); Le Cercle Francais (4); Lininger Travel
Club (2); Motor Club (4); Student Control (4); Junior Red Cross (4);
Senior Play (4)

GEORGE R. WHITNEY

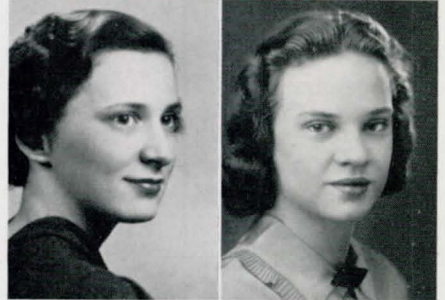
R.O.T.C., First Lieutenant (4); C.O.C. (4); Regiment (1,2,3); A Cappella
Choir (3,4); Boys' Senior Glee Club (2); Boys' Junior Glee Club (1);
Opera (4); State Music Contest (3,4); Orchestra (1,3,4); Latin Club
(2)

LILIAN WEINER

Junior Honor Society (3); Library Monitor (4); Central High Players (2,
3,4); Student Control (2,3,4); G.A.A. (1); Orchestra (1); Swimming
(1); Motor Club (3); Senior Play (4)

HAROLD WIESMAN

R.O.T.C. (4); Regiment (1,2,3); Boys' Junior Glee Club (2); Latin Club
(2,3); Motor Club (3); Register Representative (2,3,4); Student Control
(2,3); Project Committee (1,2)





MARY H. WIGGINS

Library Monitor (4); Student Control (4); Girls' Senior Glee Club (2); Girls' Junior Glee Club (1)

PHILIP T. WILSON

A Cappella Choir (3,4); Boys' Senior Glee Club (2); Boys' Junior Glee Club (1); Opera (1,3,4); Motor Club (2,3,4); Regiment (1,2); Football (3,4)



PATRICIA WIGHTMAN

G.A.A. (1,2,3,4); Baseball (2,3); Basketball (2,3); Hockey (2,3); Volleyball (1,2,3,4); Student Control (2,3,4)

ROBERT J. WILSON

R.O.T.C., Major and Regimental Supply Officer (4); C.O.C. (4); Regiment (1,2,3); Engineers (3,4); Library Monitor (4); Hi Y (1,2,3,4); President (2,4); Secretary (3); Mathematics Society (2,3,4); Motor Club (2,3); Road Show Advertising (3); Track (4)



PHYLLIS H. WILLARD

Register Staff (4); Library Monitor (4); Junior Honor Society (2); Tennis (4); Volleyball (1,2,4); Hockey (1,2); G.A.A. (1,2,3,4); Basketball (1,2,3,4); Baseball (1,2,4)

BYRON L. WINSTON

Football (1,2,3,4); Track (1,2,3,4)



DOROTHY ANN WILLRODT

Library Monitor (4); German Club (3,4); Vice President (4); Treasurer (4); Student Control (2,3,4); Pep Club (4); Motor Club (3); Girls' Rifle Team (1); Swimming (1); Commercial Awards (3,4); Senior Play (4)

LOUISE WINTROUB

Central Colleens (2,3,4); Discussion Club (4); G.A.A. (1); Home Economics Club (1,2); Los Sabios (2,3); Motor Club (3); Student Control (2,3,4)



V. ALBERT WILSON

Register Staff (4); O-Book Staff (4); Boys' Senior Glee Club (2); Boys' Junior Glee Club (1); Central High Players (3,4); Library Monitor (4); Student Control (3,4); Motor Club (1); Loquax (2); Spanish Paper (3)

SAMUEL "BUD" WINTROUB

National Honor Society

Register Staff (3,4); News Editor (4); O-Book Staff (4); Press Club (3,4); Quill and Scroll (3,4); State Press Convention (4); Junior Honor Society (3); Discussion Club (3); Library Monitor (4); Monitors' Council (4); Motor Club (2); Junior Red Cross (4); Delegate, National Press Convention (4); Senior Play (4)

SENIORS WHOSE PICTURES DO NOT APPEAR

ROSALIE BADALAMENTI
HARVEY BREIT
RACHEL COVINGTON
GILBERT DANAY

JENNIE DI BINARDO
EILEEN SONRISA ELARTH
NORMAN R. GRAY
RUTHGAYLE GRIFFIN

JOHN HAMMELEF
ALBERT JOHNSON JR.
FRANK WOODROW JONES
JAMES JOYCE

MAY KING
IDA LAFERLA
HASKELL LAZERE
LADISLAVA LUDACKA

GERTRUDE WOLF

National Honor Society
 Register Staff, Exchange Editor (4); Quill and Scroll (4); O-Book Staff (4); Press Club (3,4); Road Show (4); State Press Convention (4); Library Monitor (4); Le Cercle Francais (4); Lininger Travel Club (4); Central Committee (4); Central Colleens (2,3); German Club (3); Girls' Rifle Team (3); Motor Club (2,3,4); Student Control (2,3,4); Tennis (3,4); Junior Red Cross (3,4); Road Show Ticket Committee (4); Senior Play (4)

LENA ZOLLTUCHEN

Girls' Junior Glee Club (1); G.A.A. (1,2); Sergeant at Arms (2); Commercial Awards (2,3); Home Economics Club (3); Secretary (3); Library Monitor (3); Motor Club (1,2); Student Control (2,3,4); Volleyball (1)

MARGERY WOOD

Library Monitor (4); Central High Players (3,4); Greenwich Villagers (2); Make-Up (3); Motor Club (2); Student Control (3,4)

TOM McGRATH**JANELLE WORRELL**

A Cappella Choir (2,3,4); Girls' Senior Glee Club (1); Girls' Junior Glee Club (1); Latin Club (2); Speakers' Bureau (2,4); Student Control (1,2,3)

LELAND MEYER

R.O.T.C. (4); Regiment (1,2,3); Gentlemen's French Club (4); Discussion Club (3); Register Representative (4); Stamp Club (2); Tennis (4)

MARY WYRICK

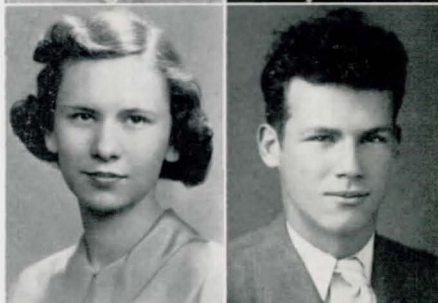
National Honor Society
 Register Staff (3,4); Assistant News Editor (4); Quill and Scroll (3,4); Press Club (3,4); State Press Convention (4); Library Monitor (4); Art Contest (3,4); Greenwich Villagers (3,4); Secretary (4); Junior Honor Society (1,2,3); Mathematics Society (2); Motor Club (2,3); Orchestra (1,2,3,4); President (4); Road Show (1,2,3,4); State Music Contest (3); District Music Contest (3,4); Regional Music Contest (4); Concert Band (4); Senior Art (4)

N. JULIAN RIPS

Register Staff (4); Road Show Advertising (4); Speakers' Bureau (2,3,4); Motor Club (3,4); Register Representative (1); Football (1)

EUGENE E. YOUNG

Register Staff (4); Press Club (4); Register Representative (3,4); Library Monitor (4); Motor Club (4); Skating Club (4); Student Control (4); Football (1,2); Wrestling (1,2,3,4); Captain (4); Football Manager (3); O-Club (2,3,4); Central High Players (1); Central High Players Plays (1)

JULIA SANFORD**SENIORS WHOSE PICTURES DO NOT APPEAR**

KATHLEEN MAHURAN
 CAMILLA MURRAY
 ANGELO NIGRO

FRANK PIRRUCCELLO
 EDWARD PROHASKA
 ELDA SMALLEY

ORRIN SHELTON
 MARVIN DONALD TAXMAN
 LYLE WILSON

ALINE WILTEN
 JOSIE WOODS
 BETTY YERGEY



Tops



E.J. SMITH
M. WYRICK
E.M. PARPER



NATIONAL HONOR SOCIETY

Wales, Buncce, Brown, Peterson, Johnson, Cockle, Otis, Crampton, McDonald, Lipsey, J. Myers, Ford, Wirttroub, Lee
 Stosburg, Pratt, Hough, Olson, Cattin, Dyball, Rosenblum, Beck, Sorrell, Carson, D. Myers, Harrison, Cohen
 Morris, Klein, Osborn, Chamberlain, Randall, Buchanan, Turner, Smith, O'Hara, Clarke, Steiner, Beerman, Lehner
 Hartman, Menning, N. Myers, Stockman, Wheeler, Wolf, Tunison, Godes, Paepfer, Westering, Kopperud, Bliss, Williams, Hoffman
 Not in picture: Odoriso, Rosenbaum, Stepanek, Wyrick

NATIONAL HONOR SOCIETY

Fifty-eight seniors, twenty-eight girls and thirty boys, gained the greatest honor Central High can confer upon its students. Ranking in the upper fourth of their class in scholastic achievement, these students were chosen for character, service to the school, and initiative. A faculty committee under the chairmanship of Principal J. G. Masters made the selections. The committee included Assistant Principals Fred Hill and Jessie Towne, and Miss Nell Bridenbaugh, Miss Mary Elliott, Mrs. Bernice Engle, O. J. Franklin, J. J. Guenther, Mrs. Irene Jensen, Miss Myrna Jones, F. Y. Knapple, Mrs. Augusta Turpin, Miss Helen Lane, Miss Bertha Neale, Mrs. Anne Savidge, J. G. Schmidt, Miss Chloe Stockard, Miss Sara Vore Taylor, and Mrs. Margarita Rosemont.

Belonging to the National Honor society bestows the same dignity upon a high school student that membership in Phi Beta Kappa does upon a college student. It is a proof of superiority in academic work, support of school activities, and real service to Central High. Trustworthiness, leadership, and good sportsmanship are the character traits especially considered in the appointment of students to the honorary fraternity. We of Central High have a special reason for being proud of this organization, as it was Principal Masters who founded it in 1921. He believed that high schools should give some form of recognition to students of marked ability and school spirit. Now nation-wide in its scope, the society has over two thousand chapters throughout the United States. Including the fifty-eight seniors elected this year, 802 students have been admitted to membership in the Central High chapter of the society in the eighteen years of its existence.

The Reverend Robert Sheridan Miller of the First Unitarian church announced the names of Central's eighteenth honor group at an all-school assembly on April 22. Miss Taylor, head of the English department, greeted the students as they came to the platform. In his address, Reverend Miller said, "Schools are now bringing the more talented people to the foreground by discovering their abilities. The world today is ahead of the past in honoring its talented, but many still go to their graves without the world realizing their abilities."

By achieving these remarkable records, students are not only improving and benefiting themselves, but are helping keep up Central's outstanding ranking in educational circles of the United States. Central is widely recognized for its notable body of teachers and officials, but always the final test of an educational institution lies in the quality of students it sends out into the world. National Honor society membership will be recognized throughout the country. This distinction is one reward for meritorious work during high school.



Wilson, Klein, Osborn, Seemann, Johnson, O'Brien, Olson, Macalister, Ford, Neble
Hoffman, Pangle, Crampton, Selby, Otis, Myers, Mallo, Holman, Lagman, Williams, Wales
Pilling, Knott, Burns, Roush, Schmidt, Guenther, Carlson, Low, Kopperud, Bliss

SENIOR OFFICERS AND SPONSORS

Officers for the graduating class of June, 1938, were chosen early in the semester to facilitate management of senior enterprises. Ray Low was elected president. Other officers were Orville Olson, vice president; Jayne Williams, secretary; and Bruce Macalister, treasurer. The boys' and girls' sergeants at arms were Lee Seemann and Mary Maenner, respectively. Roger Crampton was class parliamentarian, and class reporter was Elaine Lagman.

Popular and helpful, Miss Julia Carlson was the executive sponsor of the class and was mainly responsible for the organization of senior activities. Other faculty sponsors were Mrs. Grace Knott, Miss Maybel Burns, J. J. Guenther, Mrs. Florence Roush, Miss Ruth Pilling, and J. G. Schmidt.

Each of the three senior home rooms elected its own presiding officers. Chairman of Home Room 325 was George Wales; vice chairman, Don Osborn; secretary, Harry Otis; treasurer, Bill Pangle; sergeants at arms, Lyle Wilson and Margaret Holman. In the new auditorium, Lawrence Klein was chairman; Shirley Hoffman, vice chairman; Philip Ford, secretary; Eyvind Neble, treasurer; girls' sergeant at arms, Betty Mallo; and boys' sergeant at arms, Leslie Johnson. Officers in 215 were: Chairman, Norma Rose Myers; vice chairman, Stanton Miller; secretary, Mary Jane Kopperud; treasurer, Dick Selby; sergeants at arms, June Bliss and Bill O'Brien. On Tuesdays and Thursdays the three groups met in joint session in the new auditorium. The seniors attended their assigned home rooms the remainder of the week.

The January graduates chose John Mossman as class president. Roger Iliff was selected vice president and Betty Fry, secretary. Marie Mauro was treasurer, Jennie DiBinardo, girls' sergeant at arms and Anthony Inserra, boys' sergeant at arms. Miss Dorothy Anderson was faculty sponsor.



Tannenbaum, White, Macalister, Rosenblum, Otis, Slosburg, Kirshenbaum
Hoffman, Hassler, Beerman, Paeper, Westering, Mallo, F. Morris

SENIOR COMMITTEE CHAIRMEN

In order to aid the senior sponsors in making plans and in organizing the activities of the graduating class of 1938, the senior committee chairmen, a group of outstanding members of the class, were chosen.

"The College Chump," the senior play, was handled successfully under the able management of ticket chairman Howard Rosenblum, assisted by Bruce Macalister, Fannie Firestone, Eugene Marsh, James Waldie, Phillip Ford, Howard Scott, Helen Coyne, John Catlin, George Dyball, and Mary Jean McCarthy. Howard Turner was in charge of publicity for the play. Members of his committee were Mary Jane Kopperud, Walter Anderson, Virginia Menning, Mary Piper, Walter Taylor, and Tom Porter.

The popularity contest committee, headed by Shirley Hoffman, consisted of Harry Otis, Mary Lou Ball, Bernice Horeis, Robert Stelzer, Homer Rogers, Ann Weaver, and James McDonald.

Betty Jeanne Clarke was chairman of the committee which selected the commencement announcements to be used by the senior class. Other members of the committee were James Clapper, Barbara Beerman, Howard Rosenblum, Catherine Lynch, James Richardson, and Phillip Ford.

Plans for the social affairs including the senior banquet and dance at the Fontenelle hotel were under the chairmanships of Mary Maenner, Evelyn Paeper, Melvin Tannenbaum, Buster Slosburg, and Arlene Solomon. Assisting them were Betty Mallo, Stanton Miller, Tom Uren, Donna Neely, Virginia Gallup, Dorothy Chait, and Nellie Forrest Gaden.



LIBRARY MONITORS

Salerno, Lower, Childe, Reed, Clapper, Mayer, Otis, Oppido, Tannenbaum, Miller, Acker, Cozette, Griffith, Carey, Uren, Olson
 Kizer, Peterson, Klein, Joyce, Alperson, Engler, Archibald, Quinn, Goldsmith, E. Morris, F. Morris, Kursawe, Wolf, Merchant, Clayman, Margolin
 Bloom, Pangle, Alevezos, Selby, Cockle, Myers, Johns, Kirshenbaum, Stepanek, Wilson, N. Myers, Gould, Crowley, B. Bates, E. Morris
 Eyer, Enos, Forsell, Harrison, Hascall, Bliss, Williams, Neely, Jolley, O'Harra, Thorup, White, Urquhart, Soiref, Katz, O'Hanlon, Willrodt
 Carson, Lynch, Noble, Spar, Lerner, Kadis, Weiner, Robinson, Rubnitz, Block, Meredith, Meiches, Rychly, Koehler, Altman, Ovington, Nygaard
 Beerman, W. Bates, Hassler, Steinert, Odorisio, Harberg, Flint, Boien, Lahr, Lierk, Dustin, Thomas, Scholder, Brown, D. Myers, Lagman, Tyler, Vasko

MONITORS' COUNCIL

An increase in the number of seats in the library this term has made it possible for one hundred and eighteen students to work in the library each hour — a total of nine hundred and forty-four during the day.

There are twenty-one monitors in the library each hour. Each monitor is in charge of one table and is responsible for keeping order at his table. Each semester the monitors elect a council composed of one monitor from each hour. The council for this semester consisted of John Mayher, James McDonald, James Haugh, John Chamberlain, Norma Rose Myers, Samuel Wintroub, Loretta Rychly, and Jean Meredith.

The library has added approximately two hundred volumes, not including pay collection books, to its shelves this term. The addition of many of the more recent books to the pay collection enables students to become acquainted with and to read the latest and most popular publications. The library subscribes to thirty magazines, one daily paper, and one Sunday paper.

About forty students, including NYA workers, post graduates, and student control members, assist in the library each term. These students aid in mending, cataloging, and circulating books; registering students; and taking care of the book shelves.

The library staff is composed of Mrs. Hazel Stewart, head librarian; Mrs. Catherine Blanchard, and Miss Margaret Weymuller, assistant librarians.



LIBRARY MONITORS

Wales, Martin, Rose, Helgren, Stelzer, Osborn, Nestor, Turner, Wilson, Macalister, Bunce, Tobias, Humphreys, Anderson
 Low, Haugh, McIntyre, Nelson, Chamberlain, Broad, Seemann, Goldstein, Dyball, Brown, Pratt, Scott, McDonald
 McAdams, Abrahams, Gariss, King, Jones, Barger, Johnson, Lipsey, Richardson, Beecroft, Lee, Holland, Struck, Young, Waldie
 Cherniss, Combs, Priesman, Traub, Horeis, Westering, Dworak, Wood, Smith, Chait, Friedel, Mallo, North, Slosburg, Stein, Moore, Decker, Cohen
 Marsh, McNutt, B. M. Clarke, Jurgens, McGinnis, B. J. Clarke, Born, Lawson, Stockman, Johnson, Willardt, Willard, Holman, Adams, Hollcroft, Epstein
 Piccolo, Sloboth, Katzman, Waldman, Brauch, Berkowitz, Osoff, Stein, Solomon, Tunison, Birk, Paeper, Gaden, Fee, Ball, Wyrick, Kopperud, De Wald



MONITORS' COUNCIL

Slosburg, Chamberlain, Alevezos, McDonald, Mayer, Haugh
 Williams, Kopperud, Rychly, Mallo, Myers, Meredith, Wales



Martin, Mayher, Kuppinger, Marsh, Ford, Richardson, Milder, Taxman, Knudsen, D. Anderson, Reed, Mayer, Heimrod, McAdams, Pettingill, Macalister, Rosenblum, Wales, Cohen Chamberlain, Bradner, Engel, Foulks, Selby, Turner, Johnson, Osborne, Nestor, Duda, Pegler, Myers, Wintroub, Brown, Caniglia, Singleton, Vasko Pangle, Scott, McDonald, Alpers, Fagan, Chait, Rubnitz, Cruise, O'Hanlon, Cobry, Piper, De Wald, Stepanek, Nothnagel, Larson, M. Shapiro, P. Shapiro, Beerman, Marsh Nelsen, Willrodt, Nissen, Hascall, Carson, Gaden, Friedel, Osoff, Meiches, Clayman, Stockman, Harrison, Clarke, Kopperud, Lynch, McCarthy, Lagman, Greenbaum, Williams, Anderson, Hassler Sloboth, Brauch, Steinert, Lierk, Altman, Cherniss, Weiner, Merchant, Johnson, Weaver, E. Morris, F. Morris, Dworak, Helleman, Lahr, Dustin, Ovington, McNutt, Menning, Sims, Hoff, Neble, Jones, Mirowitz Waldman, Berkowitz, Traub, Wolf, Kadis, Fitch, Low, Shotwell, Buchanan, Bliss, Barber, Otis, Patton, Paepfer, Satrapa, Leffler, Troughton, Solomon, Block, Salzman

SENIOR PLAY

With over one hundred and fifteen seniors participating, the senior play of the class of 1938 was presented under the able direction of Miss Myrna Jones. The play, "The College Chump," is a comedy of abundant youth and is based on the amusing way a victim of an inferiority complex rises above his handicap.

The cast was mainly composed of experienced players, most of whom had participated in various other plays during their high school career. Robert W. Buchanan played the part of John Miller, "our hero" with the inferiority complex; June Bliss, the part of Marjorie Blake, a smart young college lass; Anabel Shotwell, the part of Julia Winters, a vain, sophisticated Iowa coed; Charles Barber, the part of "Spike" Hoyt, captain of the Iowa track team; and Ray Low, the part of "Magpie" Welch, the peppy cheer leader.

Henrietta Backlund was assistant director; Frances Morris, student director; Arlene Solomon, prompter; Elaine Lagman and Mary Lou Troughton, costume mistresses. Make-up was under the direction of Miss Frances McChesney.

Howard Rosenblum was business manager; Bruce Macalister, ticket manager; Frank M. Rice, stage manager. Howard Turner was in charge of the publicity.

The orchestra was under the direction of Henry G. Cox. Ushers were the non-commissioned R. O. T. C. officers.



O-BOOK STAFF

Lawson, Cole, Kuppinger, McDonald, Griffith, Anderson, Rosenblum, J. Myers, Neble, Wilson, Piper, De Wald,
 Wyrick, Raapke, Berkowitz, Hill
 Steinert, Bates, Gaden, Waldie, Nelson, Reed, Selby, Gould, Solomon, Menning, Leffler, Satrapa, Carson,
 Lynch, Harrison, Barish
 Myers, Lagman, Brown, Friedel, Osoff, Meredith, Neely, Dworak, O'Harra, Paeper, Johnson, Rubnitz, Rychly,
 Wolf, Traub, Troughton, Odorisio
 Kirshenbaum, Otis, Hassler, Graham, Westering, Myers, White, Smith, Stuht, Chait, Morris, Beerman, Bliss,
 Hartman, Adams



O-BOOK CIRCULATION

McDonald, Otis, Filkins, Stelzer, Osborne, Selby, Reed, Buchanan, King, Nimmo, Goodbinder,
 Goldstein, Clow, Wintroub, Kulakofsky, Kirshenbaum, White, Gould, Satrapa, Morris, Wilkinson, Wales,
 Wainwright, Holman, Maenner, Knox, Myers, Neely, Stockman, Clarke, North, Ball, Piper, Holman, Dwyer,
 Ellsworth, Pratt, Slosburg, Low, Martin, Wait, Bliss, Stuht, Myers, Gates, Fee, Epstein



JUNIOR HONOR SOCIETY . . . EPSILON CHAPTER

Munger, Segall, Margolin, Miller, Davis, Burkett, R. Anderson, Klopp, Ginn, McCague, Maddox, Sherman,
 Huxtable
 Cooper, Flowers, McAvin, Nepomnick, Chamberlain, Durham, Henske, Rubnitz, Gerber, Auguston, Reichstadt,
 Humlicek, Brown, Smith, Grimes, Williams
 London, Savidge, Stepanek, Everett, Ensor, Peycke, Meredith, Neuhaus, Rapp, Sellers, Maenner, Loomis,
 Hagen, Gaden, De Lacy, Brown, Bradley
 Morgan, Thomas, Smails, Newbranch, Blankschein, Larson, Johnson, Lyle, Challman, Foote, Mackley, Young,
 Kulhanek, Bordy, Moore, Shields



JUNIOR HONOR SOCIETY . . . DELTA CHAPTER

Goldsmith, Graham, Berman, Schwartz, Jacobs, Freyman, Singer, Kulesh, Spier, J. Hickey, McBride
 Gatzmeyer, Tirro, Burstein, Smith, Steinert, Silverman, Weinstein, Burke, Kolnick, Knott
 Richards, Lewis, Peery, Johnson, Carlberg, Griffith, Smith, McCampbell, Harden, Wertheimer, Noble
 Blumkin, Rimerman, Marchant, Carlton, McIntyre, Randall, Greenberg, Burton, Catlin, Burns, Macchietto,
 Robinson
 Brandt, Bailard, A. Klein, Feeken, Woodhouse, Pegler, Tetard, Tatelman, Palmquist, P. Klein, Rundell, Wolfson



JUNIOR HONOR SOCIETY . . . GAMMA CHAPTER

Serrentino, Le Mar, Waxenberg, Hertzberg, Gariss, Baldrige, Rees, Knudsen, Bremers, Trachtenberg, Crouse, Nacita, Firestone, Saylan
 Dethlefs, Robertson, Krimlofski, Bernstein, Frohardt, Yohe, Morgenstern, Wolfson, Nesselson, Antos, Kulakofsky, Zimmerman
 Bachelder, Buchanan, Phelps, Christie, Bishop, Lake, Boukal, Trotter, Rice, Keller, Anderson, Jensen, M. Han- son, Goldstein, Rosen
 Lahr, Kaiser, Richman, Kopperud, Piper, Knox, York, Carroll, Barton, Forrest, Azorin, Katzman, Wiese, McMartin, Vogel
 Brown, F. Hanson, James, Landstrom, Maxwell, Rivett, Willrodt, McQuade, Woolverton, Finlayson, Wilkinson, Worrell, Teale, Blacker, Rosenblum

JUNIOR HONOR SOCIETY

Membership in the Junior Honor society is the highest distinction under- classmen can achieve. Founded in 1923 by Principal J. G. Masters, the fraternity proposes to recognize in underclassmen those qualities on which the National Honor society bases its choice of seniors.

Superiority in character, conduct, and scholarship is requisite for election to the Junior Honor society. Juniors chosen must show real service to the school and participation in Central's activities. Scholastic requirements are at least two A's and no grade lower than B, unless the student is carrying five credits; in that case one C is allowed. The organization consists of three chapters: Epsilon for Freshmen, Delta for Sophomores, and Gamma for Juniors. The two hundred students elected this year were chosen by a com- mittee of seventeen teachers under the chairmanship of Miss Amanda An- derson. Active membership ceases at the end of one year. Graduates who have belonged are considered honorary members.

Announcement of the election was made in Central High auditorium on May 2. Mr. Frank Rice called to the platform the Juniors elected to the Gamma chapter; Miss Irma Costello announced the Delta chapter; and Miss Josephine Frisbie introduced the Epsilon chapter. Dr. H. A. Senter, former head of the chemistry department and dean of faculty at Central, delivered the charge. He warned the students to "remember to be builders, not wreck- ers, when they assume responsibilities."



REGISTER STAFF . . . FIRST SEMESTER

Anderson, Pangle, Kirshenbaum, Wintroub, Beck, Low, Martin, Rosenbaum, E. Morris, F. Morris, Goodbinder, Cohen, Wilson, Kopperud, Shotwell, Stockman, Lagman, Neely, Paeper, Gould, Beerman, Harrison, Willard, De Wald, Hassler, Hartman, Sloboth, Bliss, Ball, Dustin, Stein, Rubnitz, Wolf, Chait, Westering, Osoff, Clarke, Hascall, Williams, D. Myers, Carson, McCarthy, Wyrick, Brown, Meredith, Stuht, N. Myers, Slosburg, Turner, Selby, Otis, McDonald, Macalister, Ford

PUBLICATIONS

THE CENTRAL HIGH REGISTER, founded in 1886, is published weekly by the journalism department under the direction of Mrs. Anne Savidge. In recognition of its journalistic merit, the paper has been awarded the All-American rating again this year by the National Scholastic association. This honor was also conferred upon the Register for the years 1927-1932 and 1936-1937.

Membership in Quill and Scroll, international honor society for outstanding high school journalists, was awarded to twenty-five students this year. These members bring Central's chapter membership to a total of 424.

The National Scholastic Press association convention, held at Des Moines, was attended by Harold Slosburg, Howard Turner, Samuel Wintroub, Frances Osoff, Mary Lou Troughton, Miriam Rubnitz, and Elizabeth Kulakofsky. Another highlight of the year was the Nebraska High School Press association in Omaha, which most of the journalism students attended.

The Central High Press club was organized in 1936 so that members of the journalism department might meet to make suggestions and criticisms of the content, make-up, and other phases of the paper. Officers for this year are Bruce Macalister, president; Harry Otis, vice president; Elizabeth Morris, secretary; June Bliss, treasurer; Frances Osoff and Joe Kirshenbaum, sergeants at arms.

The O-Book, annual publication of the senior class, was published by a staff composed of members of the Register department headed by editors appointed from the senior class.



REGISTER STAFF . . . SECOND SEMESTER

Young, Low, Martin, King, Nelson, Reed, Goldstein, Bremers, Filkins, Margolin, Cohen
 Wintroub, Kirshenbaum, Kulakofsky, F. Morris, Stepanek, White, Merritt, Koll, Piper, Zimmerman, Solomon,
 Reynolds, Osheroff, Hartman
 Anderson, Kopperud, Lagman, Stockman, Neely, Wilkinson, Gould, Knox, Beerman, Worrell, Bliss, Holman,
 Short, Landstrom, Wyrick
 Satrapa, Leffler, Menning, Friedel, Stein, Schonberger, Goulds, Wolf, Westering, Osoff, Clarke, Hascall,
 Williams, Carson, Myers, McCarthy
 Troughton, Ball, Stuht, N. Myers, Slosburg, Mrs. Savidge, Turner, Otis, Selby, Clow, McDonald, Ford, Macalister

REGISTER STAFF

| First Semester | | Second Semester |
|--|---------------------------------------|--|
| Howard G. Turner | Managing Editor | Howard G. Turner |
| Harold W. Slosburg | Editor in Chief | Harold W. Slosburg |
| Samuel Z. Wintroub | News Editor | Samuel Z. Wintroub |
| Mary Wyrick | Assistant News Editors | Elaine Lagman |
| Harry Otis Bruce Macalister Alice Ann Hascall Walt Anderson Jayne Williams Mary Jane Kopperud | } Make-Up Editors | Harry Otis Bruce Macalister Alice Ann Hascall Walt Anderson Jayne Williams Mary Jane Kopperud |
| Haskell Cohen | | Sports Editor |
| Joe Kirshenbaum | Assistant Sports Editor | Joe Kirshenbaum |
| James McDonald | Business Manager | James McDonald |
| Frances Osoff | Advertising Manager | Frances Osoff |
| Ray C. Low | Circulation Manager | Ray C. Low |
| Norma Rose Myers } Barbara Beerman } | } Copy Readers | Barbara Beerman Norma Rose Myers Beth Kulakofsky |
| Gertrude Wolf | | Exchange Manager |
| Marjorie Gould | Staff Secretary | Marjorie Gould |
| Mary Wyrick | World-Herald Correspondent | Mary Wyrick |



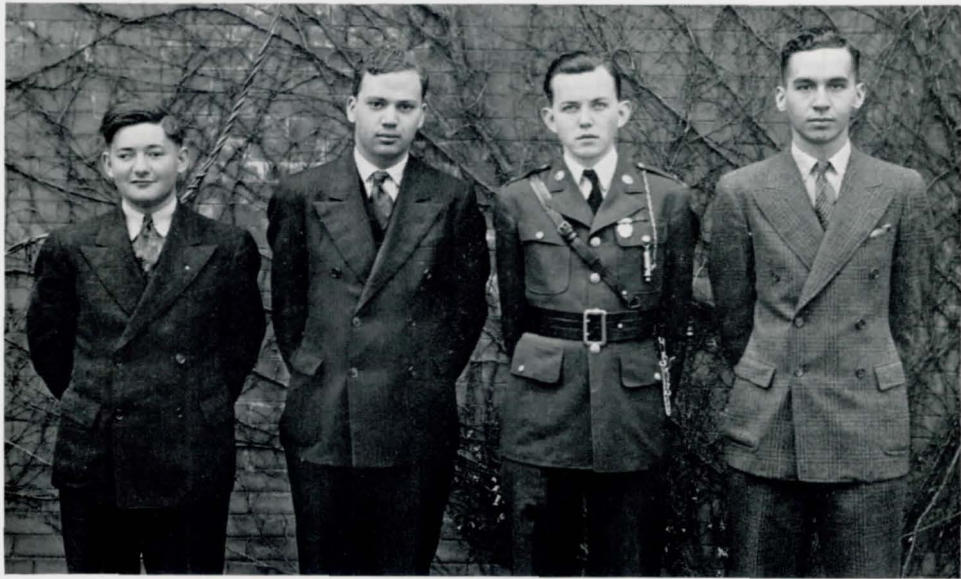
PRESS CLUB

Young, Low, Martin, King, Nelson, Reed, Bremers, Filkins, Goldstein, Cohen, Goodbinder, Epstein, Mirowitz, Sloboth
 Wintroub, Kirshenbaum, Kulakofsky, F. Morris, E. Morris, Stepanek, White, Merritt, Koll, Piper, Zimmerman, Solomon, Osherooff, Dustin, Barish, Richman
 Satrapa, Leffler, Menning, Lagman, Stockman, Neely, Wilkinson, Gould, Knox, Beerman, Worrell, Holman, Short, Wyrick, Brown, Fiedler
 Anderson, Pangle, Shotwell, Friedel, Stein, Schonberger, Foulks, Wolf, Westering, Osoff, Clarke, Hascall, Williams, Carson, Myers, De Wald
 Kopperud, Troughton, Rubnitz, Ball, Slosburg, Stuht, Myers, Otis, Bliss, Macalister, Turner, Selby, Clow, McDonald, McCarthy



QUILL AND SCROLL

Wyrick, Beerman, Wolf, Morris, Solomon, Goldstein, Wintroub, Ford, Martin, Cohen
 Hartman, D. Myers, Troughton, Clarke, Carson, Menning, N. Myers, Kopperud, Williams, Bliss
 Lagman, Friedel, Slosburg, McDonald, Turner, Otis, White, Neely, Westering



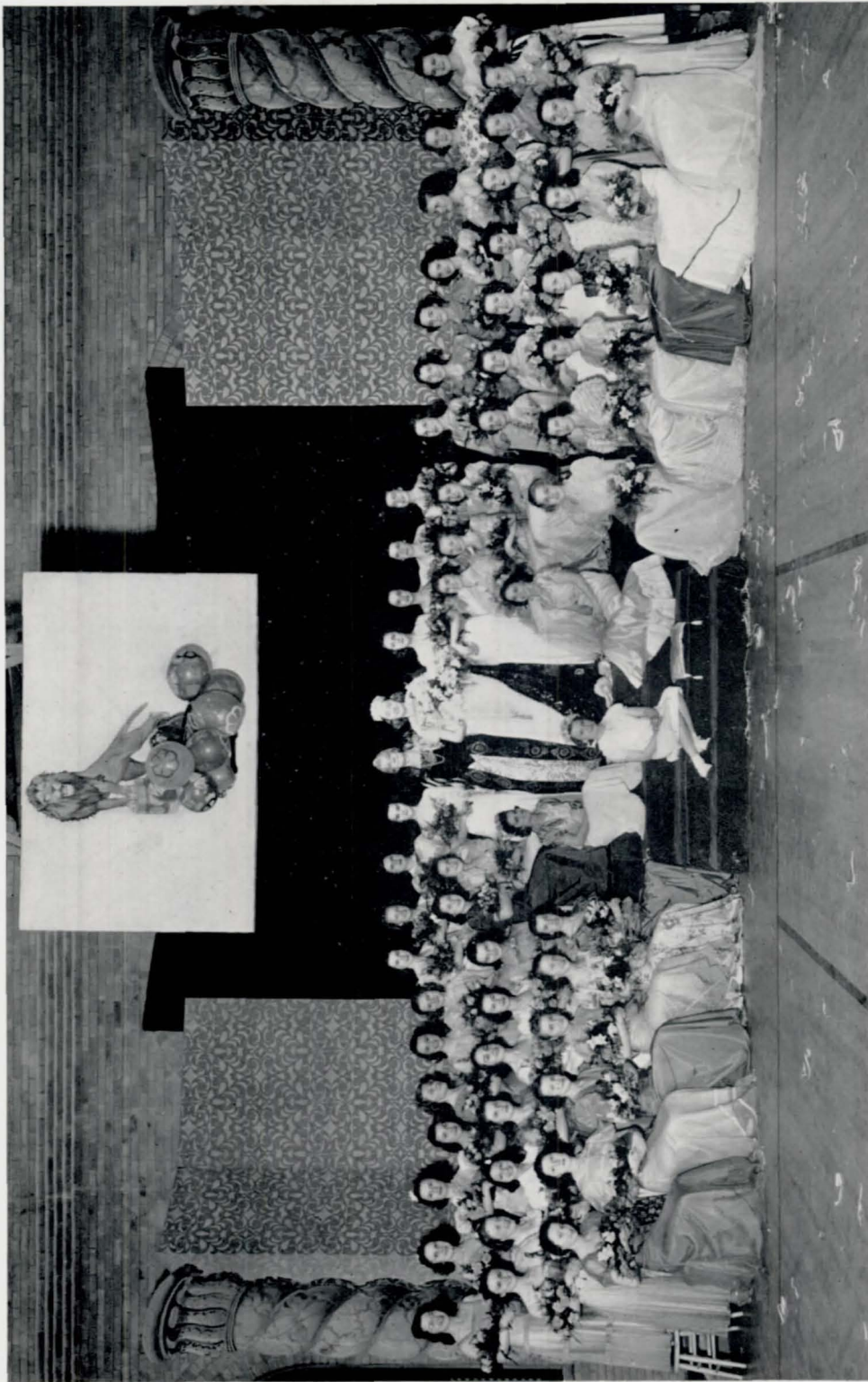
DEBATE TEAM

Goodbinder, Rosenbaum, Crampton, Crandell

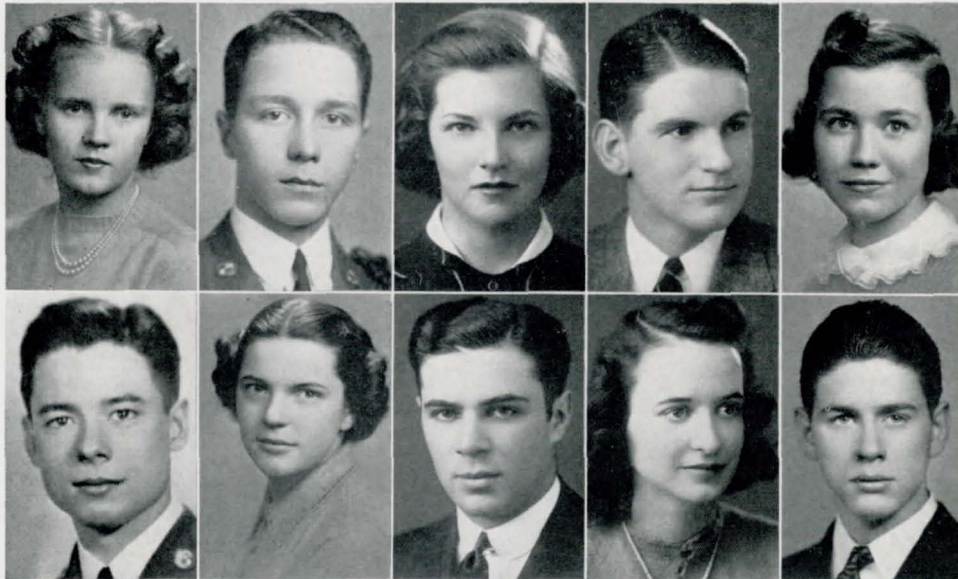


DEBATE SQUAD

Klaiman, Margolin, Lazere, Arceri, Crouse, Morgenstern, Wolfson
 Burstein, Richards, Lewis, Pinkowitz, Nesselson, Simons, Parr
 Rosenbaum, Crampton, Mortensen, Crandell, Pegler, Rundell, White



CIRCUS BALL
Frances Morris chosen Miss Central IV at an all-school girls' party sponsored by Student Control



Kopperud
Haugh

Olson
Myers

Carson
Klein

Low
Holman

Hoffman
Osborne

SENIOR POPULARITY CONTEST

GIRLS

Ideal Central Girl
MARY JANE KOPPERUD
Most Likely to Succeed
NORMA ROSE MYERS
Most Popular
MARGARET HOLMAN
Prettiest
BETTY CONDON
Best Student
GWEN CARSON
Best Nature¹
HELEN COYNE
Peppiest
JAYNE WILLIAMS

Best Actress
JUNE BLISS
Most Sophisticated
ANN WEAVER
Best Athlete
WANDA LAWSON
Best Line
ANABEL SHOTWELL
Best Artist
EVELYN PAEPER
Best Musician
MARY WYRICK

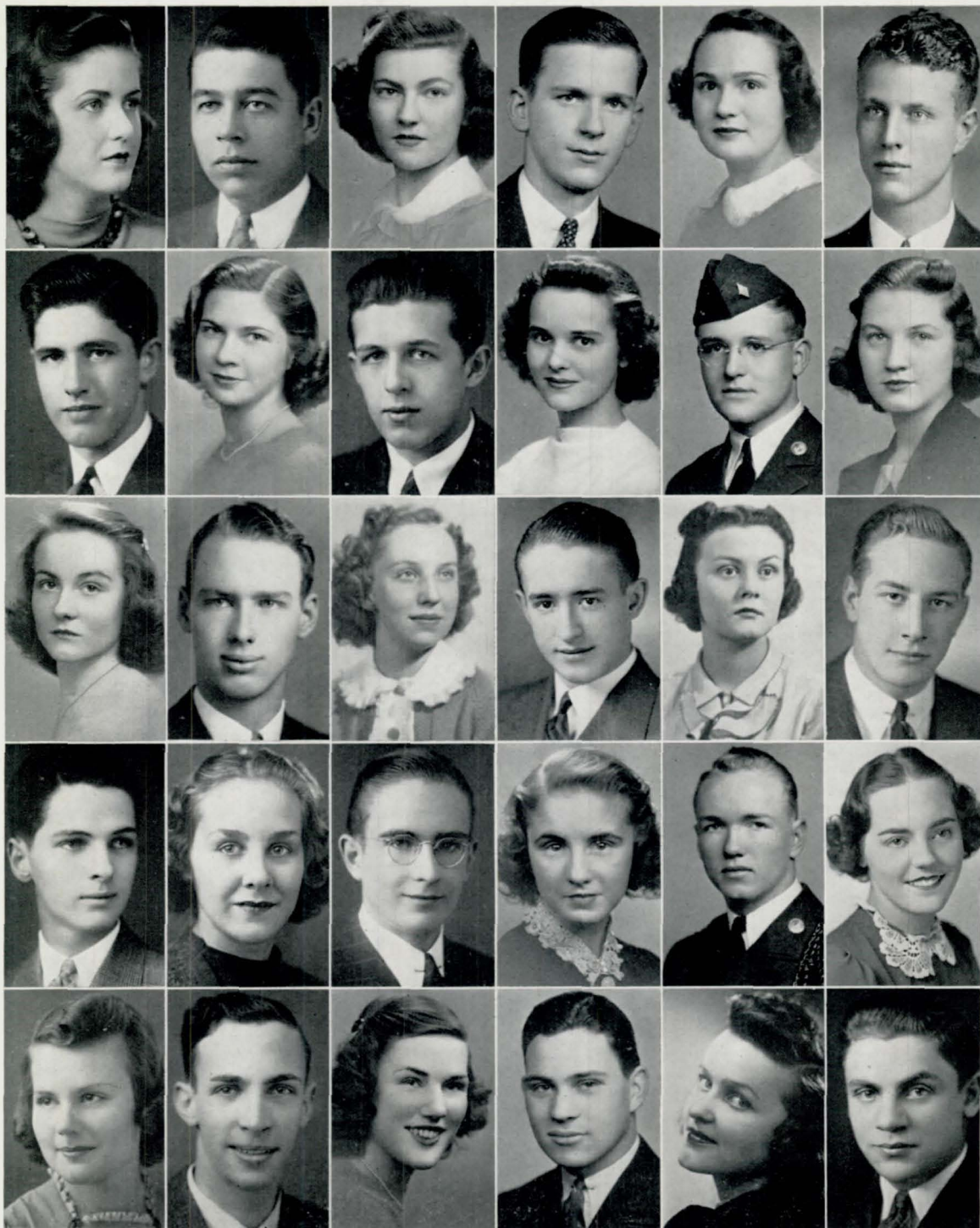
Best Dressed
NELLIE FORREST GADEN
Best Dancer
MARY HELEN NORTH
Best Voice
CATHERINE TUNISON
Most Personality
SHIRLEY HOFFMAN
Wittiest
VIRGINIA GALLUP
Most Romantic
ANN THOMAS
Sweetest
MARY JEAN MCCARTHY

BOYS

Ideal Central Boy
JIM HAUGH
Most Likely to Succeed
ORVILLE OLSON
Most Popular
RAY LOW
Best Looking
BOB STELZER
Best Student
LAWRENCE KLEIN
Man About Town
HOMER ROGERS
Biggest Bluffer
BRUCE BRIGHTMAN

Best Actor
JOHN KNUDSEN
Worst Woman Hater
GEORGE DYBALL
Best Athlete
LEE SEEMANN
Best Line
BOB SLABAUGH
Best Artist
WARREN JOHNSON
Best Musician
RAY CLEVINGER

Best Dressed
BILL CAREY
Best Dancer
BILL MCINTYRE
Best Voice
BYRON LOWER
Most Personality
HERBERT OSBORNE
Wittiest
HAROLD SLOSBURG
Best Caveman
HOWARD HUMPHREYS
Best Mannered
DON OSBORN



Condon
Stelzer
Shotwell
Slabaugh
Wyrick

Rogers
Wililams
Lower
Tunison
Clevenger

Bliss
Knudsen
Gaden
Carey
Paeper

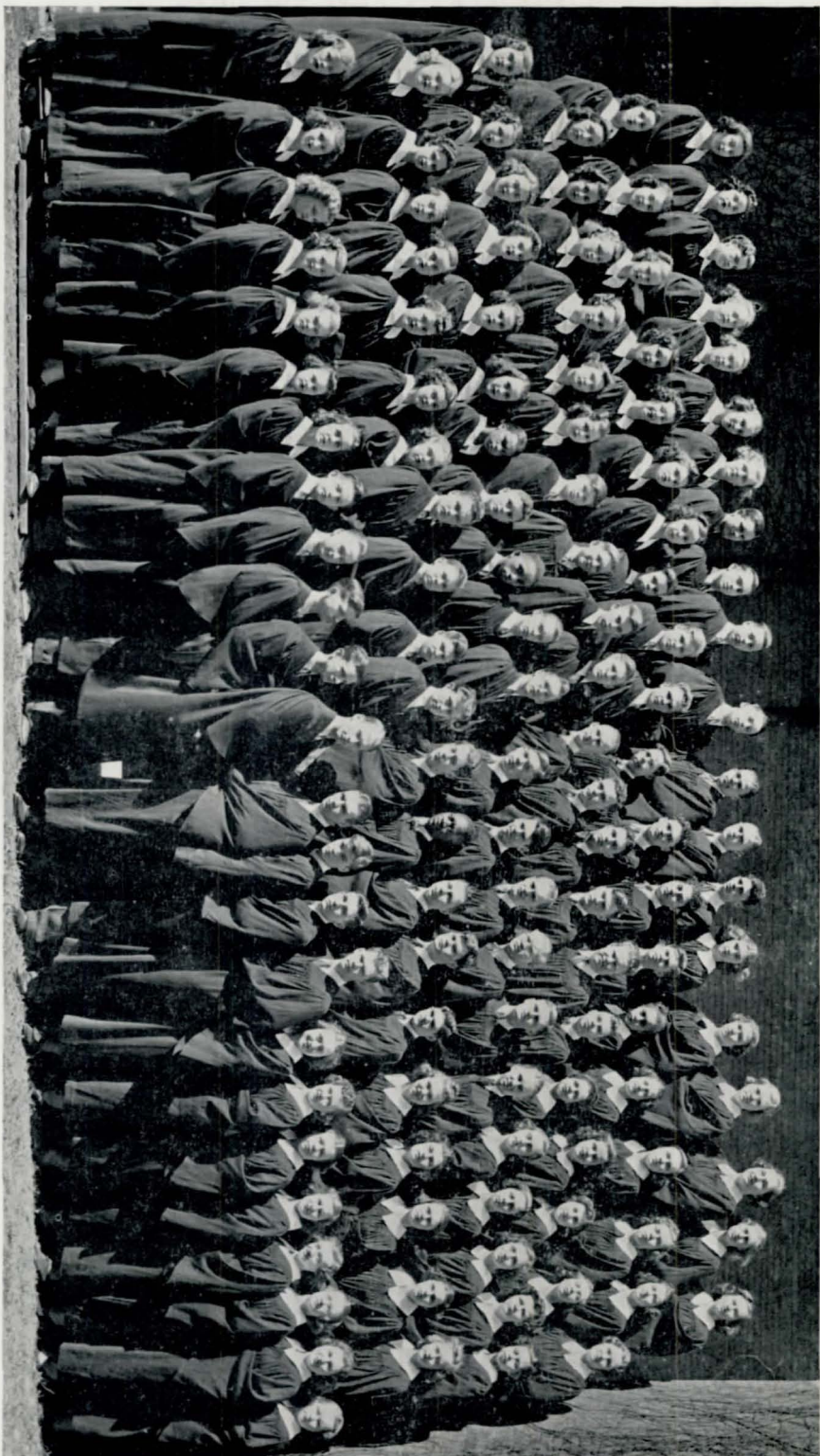
McIntyre
North
Osborn
McCarthy
Johnson

Thomas
Dyball
Weaver
Humphreys
Gallup

Brightman
Coyne
Seemann
Lawson
Slosburg

Extra Stuff





A CAPPELLA CHOIR

Sommer, Crowley, Ladvard, Emery, Maxwell, D. Nelson, Yates, Lippert, Pangle, Heimrod, Sohn, Beck, Andrews, Mercer, Wait, Catlin, Thorup, A. White, Jensen, Rose
 Soyland, Brown, Kirkpatrick, Griest, Thompson, Koll, Merchant, Blomton, Dirnig, Wells, Gerhardt, Goodwin, Koory, Cooper, Chue, Worrell, M. Meyers, Morton, Hoeman
 Hornstein, Griffith, Kursawe, Waldron, Smith, Storie, Anderson, McBride, Chudda, Salstrand, E. Swoboda, J. Myers, Bernstein, Catlin, Willson, Taylor, James, Tareimon, Belmont,
 Maerner, McDonough, Hanford, Harris, Buchanan, Harberg, Forrest, L. Neofus, Mason, Hill, Peterson, Tobias, Richter, Yohe, Johnson, P. Neofus, R. Swoboda, Boien, Marks,
 V. White, Speck, Wagensteller, Slabaugh, B. Nelson, C. Smith, Pitts, Wahlstrom, Kessler, Twiss, Wallace, Forehead, Goodlett, Olson, Goodsell, Veneziano, Wilkinson, Katz,
 Fee, Grabow, Bruett, Greenspan, Nielson, Holman, Tunison, Berman, Hyper, Thomas, Robertson, Lower, Moran, Armstrong, Allardyce, L. Johnson, Odoriso, Lorenzen, A. Nelson,
 Steinerl, Rihd, Nissen, Robinson, McMarrin

MUSIC DEPARTMENT

Under the direction of Carol Marhoff Pitts, Elsie Howe Swanson, Irene Haskins Jensen, and the accompanist, Lylyan Wick, the vocal department has completed the year 1938 with distinctive accomplishments.

The junior and senior glee clubs and the a cappella choir, organized for the development, inspiration, and enjoyment of the students, have fulfilled their goal by reading great music and by giving various worth while programs.

Outstanding in the a cappella choir's repertoire was a suite, "From Grief to Glory," written by Dr. F. Melius Christiansen of the famous St. Olaf's choir and dedicated to Central's choir. This work is considered one of Dr. Christiansen's finest compositions.

Two one-act operas were given December 9, 10, and 11 by the choir. "Trial by Jury," a farce on a breach of promise suit, and "The Sleeping Queen," an eighteenth century romance, combined laughs and love lyrics into the program. The presentation marked the date of the first program offering two operas.

Sixty members of the choir won a "highly superior" rating at the National Music Supervisors' conference at St. Louis, March 30 to April 2, and was one of only two placing first in both concert and sight-reading. Our choir was honored by being chosen the echo choir in the "Echo Song," sung by the great national chorus directed by Noble Cain of Chicago. Other laurels were the choir's broadcast on a national radio hookup, three demonstrations and a concert before the conference. Catherine Tunison received superior rating in the soprano solo contest of the conference.

For the fourth successive year, the choir was invited to Tekamah, April 22, to give a concert. As a result of these concerts, Tekamah has now a full time music supervisor.

In the regional contest, May 12, 13, and 14, in Omaha, the choir entered the large group division receiving the coveted I rating, and Gloria Odorisio and Byron Lower entered the soloist division receiving I ratings.

Reorganized this year, the madrigal group consisted of Catherine Tunison, Gloria Odorisio, Betty Mae Nelson, Alice Jayne Nelson, Byron Lower, Orville Olson, Melvin Roberts, and Donald Beck. They sang at many functions during the year including a city-wide program, on which outstanding groups in Omaha schools participated, and the national program at St. Louis. Madrigals, the most difficult form of vocal music, originated in the home and in small social functions where groups sang together for their own entertainment.



Graham, Hertzberg, Shestak, Wyrick, Bakewell, Nelson, McKimney, G. Lippert, Thompson
 Sahn, Manske, J. Davis, Ostrand, Grasso, Swanson, Clevenger, A. Lippert
 Durham, Eastlack, Reznichak, Hahn, Britton, Vacanti, Srb, Thompson, Ruback
 Bishop, Riha, M. Griffith, Duff, Simon, Feldman, Manshik, Dworak
 Whitney, Still, Ledyard, Merritt, J. Griffith, Veneziano, Turkel, Pomodoro, Soland

CONCERT BAND

Through all his years at Central High school, Henry G. Cox, band and orchestra director, has worked diligently in an attempt to promote a concert band. With Superintendent Anderson's encouraging stand in the field of the grade school bands and orchestras, a concert band has at last been organized at Central with a membership of fifty students.

Mr. Cox is very pleased with the enthusiastic spirit and with the rapid progress which has been made in the short time since the completion of an adequate band and orchestra room.

As a reward for the band's hard work in organizing, and their diligent training, the Concert Band participated in the second annual National School Music Competition festival, which was held in Omaha, May 12, 13, 14. Dressed in their purple and white uniforms, the band played four numbers, two of which were sight-reading, and won a good rating which was most inspiring for a young pioneer organization. Several members of the band won high individual ratings in the competition. A highly superior rating was awarded to Mary Wyrick and Betty Mae Nelson for their viola and violin solos, and also to Mary Wyrick, Betty Mae Nelson, and Jane Griffith for their string trio. Central is justly proud of this musical attainment and is hoping for continuation of this fine work.

The newly-elected officers who officiated for the semester were: Mary Merritt, president; Dwight Brigham, first vice president; Frank Grasso, second vice president; Tony Veneziano, third vice president; Jane Griffith, secretary; Alice Ledyard and William Sahn, sergeants at arms.



SENIOR ORCHESTRA

Ostrand, Poore, Fuller, Weisman, Durham, Whitney, Lippert, Andrla, Graham, Simon, Thompson
 Larsen, Turkel, Sahn, Swanson, Gass, Pomodoro, Vacanti, Schantz, Veneziano, Grasso, Miller
 Young, Chamberlain, Hornstein, Manske, Glasshof, Thomas, M. Griffith, Still, Britton, Sing, Lippert
 Higgins, Nelson, Riha, Ledyard, Wyrick, Kulhanek, J. Griffith, Humlicek, Huxtable, Rosen, Duff



JUNIOR ORCHESTRA

Bailey, Merritt, Johnson, Nachman, Ruback, Grimes, Srb
 Jirovec, Reznicek, Graham, Krimlofski, Vacanti, Schalnick, Menshik
 Whitney, Shestak, Loss, Ledyard, Pomodoro, Sing, Lippert



Margolin, Scott, Waldie, Martin, Gariss, Hertzberg, Barber, Jones, Gilmore, Rossitto
 Parr, Devereaux, R. Nelson, Polyzois, Hoffman, Alevezos, Frissell, Beck, Mayper
 Hyspe, Krecek, Freymann, Allardyce, Bremers, Hinchcliff, Ferryman, Moon, Rogers, Milder
 Foulks, Lipsey, Knudsen, J. Nelson, Anderson, Burns, Rosenblum, Ford, Pearson, Low
 Worrell, Clark, Dwyer, Fitch, Piper, De Wald, Baysdorfer, O'Neill, Smith, Hickey, Nimmo

SPEAKERS' BUREAU

Because the school needed more interesting and convincing speakers, the Speakers' Bureau was organized in September, 1921, under the direction of the expression and debate departments.

The aim of the Speakers' Bureau is to bring in closer contact the student body and the activities of the school. Formerly, membership in the organization was not limited to students in the public speaking classes, but all students were required to try out with a sample speech before being admitted to the Bureau. A special home room called "Speakers' Bureau home room" was maintained.

At the present time only those who are members of the public speaking and debate classes are eligible to membership. In this manner the speech material can be organized and developed as part of the regular class work.

The Bureau desires to take care of all speeches to help create an interest in any school activity. When a faculty member has a special announcement he wishes to be emphasized to all students in school, he notifies Miss Myrna V. Jones, the sponsor of the Bureau. The students then make speeches in all of the home rooms on a specified date.

About fifty students belong to the organization each semester. Activity credit is given to the members for the time which they devote to making announcements.

This Bureau has been a valuable aid to many school activities such as plays, musical productions, S. A. ticket drives, and athletic contests.



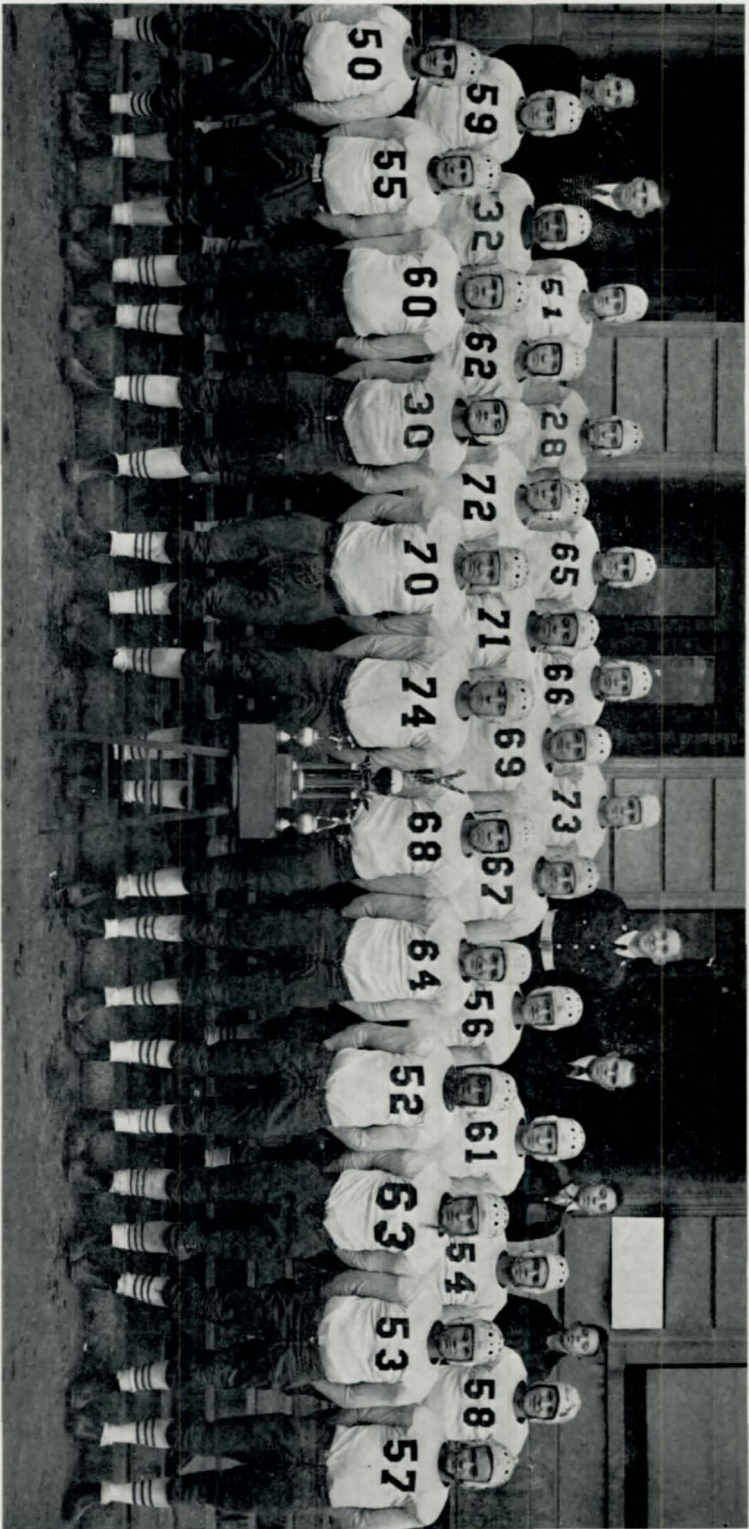
Rosenblum, Porter, Swoboda, Rasmussen, Goodwin, Mayer, Pettengill, Jones, Pegler, Osborne, Sinclair, Barish, Crawford, Greenberg, Griffith, Thompson, Green, Carp, Mitchell, Melum, Nimmo, Buchanan, Rogers, Souder, Gilmore, E. Wolk, G. Wolk, Wilson, Robinson, Frank, Whitehead, Shafton, McCormick, Williams, Bihler, Walton, Mangiameli, Wiggins, Dawson, Dwyer, Emmert, Waite, Wertheimer, Feekin, Beasley, Sklarr, Simon, Bergman, Noble, Blankschein, Meiches, Harberg, Nielson, White, Kadis, Weiner, Firestone, Mirowitz, Epstein, Koll, Kvetensky, Brauch, De Wald, Burke, Klein, Swarr, Azorin, McNutt, Lorenzen, F. Morris, E. Morris, Milder, Bliss, Dolly, Fitzpatrick, Richardson, Ovington, Sloboth, Rosen, Kollnick, Loss, Backlund, Hellermann, Lahr, Miss McChesney, Knudsen, Madison, Miss Jones, Travis, Wood, Maenner, Wagenseller, Griess, Evans

CENTRAL HIGH PLAYERS

Whether the setting has been the open-air amphitheatres of ancient Greece, the crude stage of the Middle Ages, the cobbled innyards of Elizabethan England, the showboats on the Mississippi, or the ornate theatres of today, the footlights have always had a peculiar fascination. Realizing this appeal, a group of ambitious individuals, desiring to offer an opportunity to students to participate in stage activities, banded themselves together in 1926 and organized the Central High Players. Since then, the club has progressed rapidly, and at the present time, under the sponsorship of Miss Frances McChesney, has a membership of approximately one hundred.

The highlight of the year in the Central High Players' activities was the annual fall play, "Seven Keys to Baldpate," which proved to be one of their outstanding dramatic successes. This thrilling melodrama, written by the ingenious George M. Cohan, took place in a quaint old inn on Baldpate mountain, where mystery and comedy went hand in hand to leave the audience breathless at the climax. The play drew an enthusiastic crowd.

Other activities of the year included a puppet show, a Christmas party, and short plays and impromptu entertainment at the monthly meetings. The election of officers at the beginning of the year resulted as follows: John Knudsen, president; Dallas Madison, vice president; Helen Travers, secretary; Fannie Firestone, treasurer; Blaine Carp, sergeant at arms; Mildred Nielsen, historian.



FOOTBALL TEAM

Noble, Coach Knapp, Panole, Gargano, Caniglia, Moran, Hronek, Mactier, Coach Morrison, M. Evans, Evans
 Osborn, Winston, Humphreys, Goodsell, McDonald, Westering, Pomodoro, Fogan, Hefflinger, Wells, Johnson
 Vecchio, Weekes, Griffith, Quinn, Wilson, Seemann, Nelson, Schonberger, Hall, Minarik, Sundberg, Scott

ATHLETICS

FOOTBALL — Starting the season with only four veterans, Central's football team was given little chance to win the Intercity grid crown, but Coaches Knappe and Morrison upset the predictions by putting a winning team on the field. This season was the Purples' best since winning the city title in 1934. They completed their schedule with five wins, one loss, and one tie.

The opening game of the year was with South. Central went into the game as the underdog, but came out on top at the final gun. Next came the annual, much-publicized Tech conflict. A hard-fighting Purple eleven, with the never-give-up spirit, came from behind to win, 12 to 6.

Central's gridders went into the Abraham Lincoln game feeling sure of victory. The Lynx put up a terrific fight and almost played the mighty Eagles to a standstill. An intercepted pass for a touchdown crushed A. L.'s hopes for a tie. North held the Purple running attack for three quarters, but finally, weakened by the constant battering of the Purple backs, also went down in defeat.

Powerful Lincoln High was considered three touchdowns better than Central, but the courageous Purple team put up a gallant fight to hold the Links to one score. This game was the Eagles' only loss of the season.

The Intercity football championship was at stake in the Benson fray. The Bunnies were pre-game favorites, but the Eagles scored twice to Benson's once, and won, 12 to 6. Fremont was the last game on the schedule. Central completely outplayed the Tigers, but was held to a 6 to 6 tie.

Central's coaching staff under Knappe and Morrison should be commended for their hard work and tireless efforts in producing a championship team.

BASKETBALL — The cagers under the tutelage of Coach Knappe won five out of fifteen games, but this season was the best for the Purple hoopsters for a number of years.

The highlights of the season came when Central twice knocked off the state titleholders, South, and when they soundly trounced the well-organized Benson Bunnies, 59-32. Other teams defeated by the Purples were Sioux City East and Sioux City Central.

WRESTLING — With the return of six lettermen, and the appearance of a new coach, Allie Morrison, a former Olympic champion, the prospects for a successful wrestling season appeared good. Although the grapplers did not win the championship, they displayed fine sportsmanship and did their best at all times.

TRACK, BASEBALL, GOLF, AND TENNIS — All these spring sports have gone through their schedules with satisfactory results. The trackmen under the able coaching eye of "Papa" Schmidt have shown fine all-around work. The baseball team, coached by F. Y. Knappe, has always proceeded with the same intrepid form regardless of wins and losses. The golfers, playing under a new coach, L. W. Busing, finished another successful season.



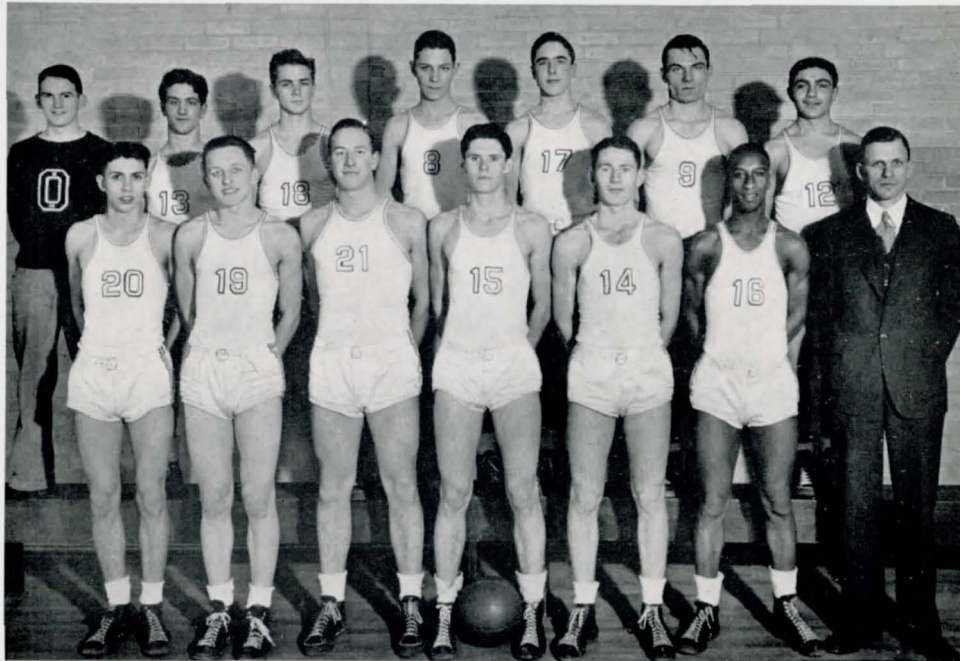
O-CLUB

Manzitto, Wells, Bramson, Bohan, Johnson, Uren, Wilson, Osborn, Haugh, Distefano, Low
 Pangie, Petersen, Weekes, Knowles, Archibald, Duffy, Pratt, Castro, Patton, Young, Nebie
 Evans, Gadden, Scott, Baltzer, Hefflinger, J. Moran, Seemann, Dyball, Klein, Hallaway,
 Vecchio, McElligott, Minarik, Brood, Pomodoro, Wilson, O'Brien, Humphreys, Werner, Goodsell, Garrotto
 B. Moran, Hall, McDaniel, Winston, Griffith, Quinn, Westering, Nelson, Rodwell, Kizer, Pommerenk



WRESTLING SQUAD

Sanders, Cockle, Parker, Caniglia
 Chilesi, Milke, Malashock, Seb Campagna, Latenser, Patton, Walsh, Ostrand
 Jorgensen, Keuchel, Farho, Hronek, Moran, Abboud, Godden, Bachman, Grimes, Campbell
 Pomodoro, Humphreys, Weekes, Sam Campagna, McElligott, Coach Morrison, Young, Garrotto, Evans, Slyter



BASKETBALL

Low, Vecchio, Wells, Bramson, Pommerenk, Minarik, Nocita
 MacDaniel, Kriss, Seemann, O'Brien, Wilson, Hall, Coach Knapple



Hombrae, H. Plechas, J. Plechas, Chrisinger, Bruce, Griffith, Thomas, Bakewell, Eyer, J. Sgroi Piccolo, Palmer, Lahr, Stevenson, Nellor, Lawson, Meredith, Brawner, Combs, Friend, Stewart A. Sgro, Morocco, Richards, Bergman, Virailletti, Miller, Yates, Rowan, Born, Dustin, Willard Paterno, Hammang, Peterson, Rossel, Moore, Beers, Barish, Morton, Hinckley, Vermillion, Pattavina

GIRLS' ATHLETIC ASSOCIATION

The purpose of the Girls' Athletic association is to promote interest in girls' sports, to encourage high ideals of sportsmanship, and to give every girl an opportunity to participate in sports according to her interests and abilities. Any girl interested in athletic activities may join, and over fifty girls belonged to the organization this term.

A great variety of sports is offered for girls both in G. A. A. and in the sports department. They have a chance to participate in soccer, field hockey, basketball, baseball, archery, tennis, table tennis, riflery, tumbling, and any form of dancing. Play days, in which the girls are invited to participate, are usually sponsored by various schools.

The aim of every member of the G. A. A. is to win at least one of four awards offered. The first is an emblem C with a class numeral; the second, a letter O; next, the triangular state award; and last, the six-point state award. In order to qualify for any award the girl must have earned ten units for work carried on under supervision and five units for activities carried on outside of school. The girls must also obey certain training rules; wear proper shoes to school; pass heart, teeth, and posture examinations; and receive passing grades in at least three school subjects for the current semester.

Wanda Lawson was president of the association this term. Other officers were: Mary Kay Brawner, vice president; Doris Vermillion, secretary; Betty Nellor, treasurer; La Juana Paterno and Betty Hammang, sergeants at arms.



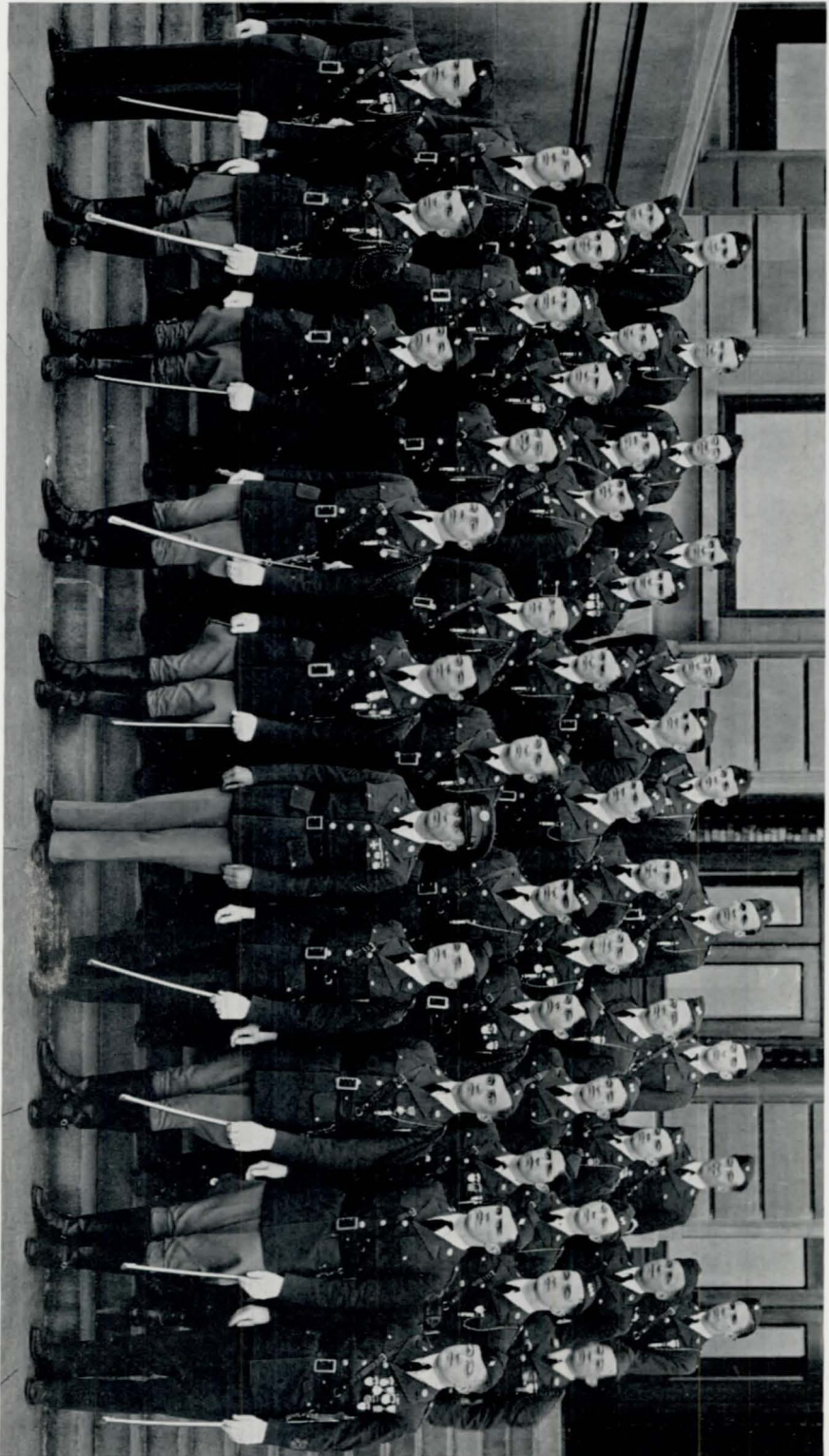
DISCUSSION CLUB

Margolin, Pinkowitz, Pound, Lipsey, Bernstein, Morgenstern, Wolfson, Devereux, Berman, Hahn, Burstein,
 Arceri, Kennedy, Bruington
 Richards, Lewis, Bailey, Guss, Goodbinder, Burton, Blacker, Simon, Lefitz, Miller, Rosen, Kolnick, Katzman,
 Goldstein
 Cooper, White, Gershater, Janoff, Simon, Dethlefs, Azorin, Gogola, Rundell, Osheroff, Abrahamson, Lerner,
 White, Goldstein
 Frank, Arbitman, Sloboth, Linda, McDonough, Brauch, Morgenstern, Singer, Crouse, Griffith, Wintroub,
 Civin, Finer



STAMP CLUB

Hendricks, Pound, Dewell, Tobias, Bremers, Myers, Bailey, Sargent
 Kuppinger, Merritt, Tannenbaum, Morton, Mactier, Henderson, Scott, Brauch, Sloboth



CADET OFFICERS' CLUB

- Alevezos, Whitney, Rosenblum, Kuppinge, Ford, Crampyton, Clevenger, Child, Chamberlain, Burns
- King, Marsh, Pangle, Richardson, Selby, Tannenbaum, Tobias, Taylor, Uren
- Larson, Bunch, Broad, Catlin, Johnson, Otis, Osborn, Rose, Martin
- Seemann, Osborne, Helgren, Humphreys, Macalister, Brigham, Buchanan, Stelzer, Turner
- Brown, Anderson, Wales, Olson, Haugh, Sergeant Wyatt, Miller, Nestor, Wilson, Dyball



JAMES C. HAUGH
Colonel,
Commanding Cadet Regiment

SHIRLEY HOFFMAN
Honorary Colonel



STANTON MILLER
Lieutenant Colonel,
Executive Officer

CADET OFFICERS' CLUB

Major, Regimental Adjutant
GEORGE WALES

Major, Regimental Supply Officer
ROBERT WILSON

Major, Plans and Training Officer
GEORGE DYBALL

Major, Ordnance Officer
CHARLES NESTOR

Captain, Personnel Adjutant
HOWARD TURNER

Captain, Staff
ROBERT STELZER

First Lieutenant,
Regimental Quartermaster
JOHN CATLIN

Second Lieutenant, Staff Bugler
HOWARD ROSENBLUM

Second Lieutenant, Records Officer
ROGER CRAMPTON

FIRST BATTALION

Major,
Commanding First Battalion
ORVILLE A. OLSON

First Lieutenant,
Battalion Adjutant
EUGENE ROSE

First Lieutenant,
Battalion Quartermaster
RICHARD SELBY

Captain, Commanding Company A
LEE SEEMANN

Second Lieutenants, Company A
ROBERT BURNS
JOHN CHAMBERLAIN
TOM UREN

Captain, Commanding Company B
HERBERT OSBORNE

First Lieutenants, Company B
WILLIAM BUNCE
LESLIE JOHNSON

Second Lieutenant, Company B
HOMER ROGERS

Captain, Commanding Company C
NORMAN HELGREN

First Lieutenant, Company C
HARRY OTIS

Second Lieutenants, Company C
JAMES CHILDE
GEORGE ALEVEZOS

SECOND BATTALION

Major,
Commanding Second Battalion
WALTER ANDERSON

Captain, Battalion Adjutant
ROBERT BUCHANAN

Second Lieutenant,
Battalion Quartermaster
DORSEY KING

Captain, Commanding Company D
HOWARD HUMPHREYS

First Lieutenants, Company D
PETER BROAD
WILLIAM PANGLE
JAMES RICHARDSON

Captain,
Commanding Flag Company E
BRUCE MACALISTER

First Lieutenants, Company E
EUGENE MARSH
ROBERT MARTIN

Second Lieutenants, Company E
PHILIP FORD
JACK FAGAN

THIRD BATTALION

Major,
Commanding Third Battalion
LOY BROWN

First Lieutenant,
Battalion Adjutant
DON OSBORN

Second Lieutenant,
Battalion Quartermaster
JOHN KUPPINGER

First Lieutenant, Commanding
Freshman Company Number 1
WALTER TAYLOR

First Lieutenant,
Freshman Company Number 1
MELVIN TANNENBAUM

First Lieutenant, Commanding
Freshman Company Number 2
GEORGE TOBIAS

First Lieutenant,
Freshman Company Number 2
JACK LARSON

CADET BAND

Captain,
Commanding Cadet Band
DWIGHT BRIGHAM

First Lieutenant,
Cadet Band
GEORGE WHITNEY

Second Lieutenants,
Cadet Band
RAY CLEVINGER
JOE STANDEVEN



CRACK SQUAD

Grimes
 King Clow
 Dow Jettors
 Rodwell Thomas
 Devereux Barakat
 Stuht Porter
 Ashton Daugherty
 Westering Nimmo
 Alevezos



RIFLE TEAM

Sergeant Wyatt, Freyman, Graham, Craft, Taylor, Steel, Eyre, Williams, R. Peterson
 Barakat, Howe, Steinert, Duffy, M. Peterson, Werner, Dyball, Broad



R. O. T. C. BAND

Lippert, Forehead, Pomodoro, Thompson, McKimmes, Soland, Graham
 Hertzberg, Feldman, Still, Krejci, Vacanti, Grasso
 J. Davis, Veneziano, Lippert, Taylor, Burford, Sahn
 H. Larsen, Bishop, McNutt, Sheridan, Hahn, Lagman
 Dworak, Thompson, B. Davis, Eastlack, Johnson, Ruback
 Turkel, Rosenblum, Whitney, Brigham, Clevenger, Johnson



ENGINEERS

Burstein, Barakat, Dow, Milek, Westering, Mactier, Wahlstrom, Peters, G. Johnson, Baker, Amberson
 Wales, Anderson, Brown, Dyball, Haugh, Miller, Olson, Nestor, Wilson



Hronek, Silverman, McConnell, Bernstein, Knudsen, Tobias, Nestor, Archibald, Cohn, Eisenstatt, G. Johnson, E. Malashock
 Slosburg, Anderson, Rose, Haugh, Carey, Arthur, Engler, Bradner, Le Mar, Heimrod, Trachtenbarg, Lipsey, Morgenstern, Weinstein
 Martin, Helgren, non-member, Osborne, Carroll, L. Johnson, Turner, Chamberlain, Eyre, Jacobs, I. Malashock, Garrotto, Gershater
 Richman, Barnett, Zimmerman, Phelps, Nordstrom, Lee, Greenberg, Flint, Harris, Myers, Bunce, Beck, Brown, Hickey

MATHEMATICS SOCIETY

The Mathematics society was organized in 1922 for the purpose of stimulating and encouraging interest in the history and study of mathematics. This departmental club, under the sponsorship of Miss Amanda Anderson, is the only organization at Central based on scholarship.

Officers for the first semester were: George Wales, president; Howard Turner, vice president; Loy Brown, secretary; Leslie Johnson, program chairman; Edith Harris and William Bunce, sergeants at arms. The second semester the following officiated: Loy Brown, president; James Myers, vice president; William Bunce, secretary; Donald Beck, treasurer; Ephraim Gershater, program chairman; Virginia Lee and Walter Anderson, sergeants at arms.

Outstanding among the club's activities were fascinating projects in the various fields of mathematics, including geometry as applied to artistic design and architecture, the Hampton Court maze in landscaping, and Kepler's Laws dealing with astronomy; conic sections were shown as curved intersections of a plan and a cone and as straight lines when drawn on logarithmic graph paper. Along with its various activities, the Mathematics society invited the members of the school to hear the illustrated lecture on the construction and future benefits of Boulder dam.

The society's successful year was climaxed by the annual presentation of cash awards to the three highest ranking of the nine seniors who maintained an average grade of "A" throughout eight semesters of academic mathematics. George Wales and James Haugh tied for the first and John Catlin received the third award.



Lynch, Carson, Nelson, Pratt, Young, Challman, Scholder, L. Gaden, Busch, Payne, Knott, Harrison, Mackley, Bruett, Hawkins
 Hassler, Slater, Satrapa, Leffler, Clarke, Noble, N. Gaden, Neuhaus, Finlayson, Smith, Splawn, Bates, Kirkpatrick, Thomas
 Voss, Goldstein, Arbitman, Beerman, Blacker, Stockman, Merritt, Mallo, North, Neely, Rosenstock, Milder, S. Hoffman, Coyne, Adams
 York, Bishop, Carney, Williams, Bliss, Hascall, Myers, Griffith, Frazee, Fuhrer, D. Kopperud, Porter, Johnson, Buchanan, McMartin
 Steinert, Lewis, Knox, Kulakofsky, Westering, Wolfe, M. Holman, M. J. Kopperud, Dickenson, Catlin, Thomas, P. Hoffman, K. Holman, Hosman

LININGER TRAVEL CLUB

For the purpose of gathering information about the customs of other countries, inspiring a friendly interest in foreign affairs, and realizing the possibilities and value of world peace, the Lininger Travel club was organized for girls at Central in 1903. The club, which is the oldest organization at Central, was named after Henry Lininger, a noted traveler and explorer who lived in Omaha.

The officers for this term were: Mary Jane Kopperud, president; Shirley Hoffman, vice president; Mary Noble, secretary; Alice Ann Hascall, treasurer; Della Kopperud and Frances Fuhrer, sergeants at arms. The sponsors of the organization are Miss Mary Parker, Mrs. Grace Knott, and Miss Margaret Mueller.

The main activities of the year included a tea for prospective members given by Mary Jane and Della Kopperud; a tea at the home of Jane Young, at which she displayed her collection of dolls; and talks by Mrs. Kenneth Finlayson, Mrs. E. M. Sunderland, Mrs. Florence Stack, Principal J. G. Masters, and Jean Short on their various travels.

Thanksgiving and Easter baskets were presented to a needy family under the supervision of Mrs. Grace Knott and Martha Harrison.

A former member anonymously sent a gift of money in appreciation of what the club had done for her. The sum was turned over to the scholarship fund by vote of the club.



L'ALLIANCE FRANCAIS

Thompson, Williams, Spier, Lawson, Joyce, Carey, Rodwell, Cockle, Morton, King, Henske, Le Mar, Lipsey, Ralston, Hendricks, Twiss, Nimmo
 Wheeler, Kulakofsky, Westering, Greenberg, Wolf, V. Robinson, Osborne, Brightman, Baldrige, Urquhart, Dworak, O'Hara, Nellor, Woolverton, Harris, Wilkinson, Griffith,
 Rapp, Frazer, Dimond, Graham, King, Carmory, Hanford, Woodbridge, Bennett, Freyger, Sturt, Fortune, Moerner, Newman, Rowen, B. Robinson, Piccolo, Crowley, Dansky
 Rimmerman, Buchanan, Nelson, Smith, Rogers, Marsh, Smith, Splawn, Christie, Nordstrom, Allan, Kennedy, Conley, Billings, Wertheimer, Traub, Brockman, Borby, Lee, Leaser
 Ellsworth, Dwyer, Thornton, Roddy, Steinert, Haggerty, Greenspan, Pitts, Nissen, Pickering, Klein, Kaiser, Lahr, M. Robinson, Albert, Wright, Meyer, Hopkins
 A. Rosen, Bates, Davis, Dailard, Baugh, Brunnington, Gordon, Kolnick, Nothnagel, Ma honey, Shotwell, Bozell, Pilling, Wahnier, Drahnard, Olmstead, R. Rosen, Hanson

L'ALLIANCE FRANCAISE

To increase the cultural interest and background of the French students, the French department has this year done away with the two separate clubs, Le Cercle Francais for girls and the Gentlemen's French club for boys, and in their place has organized the Junior Alliance Francaise. L'Alliance Francaise is an international organization started for the purpose of furthering the French language throughout the world, and has its international headquarters in Paris.

The membership of this club is open to all students of French, and this year there are about 150 members. Due to this large number, the Omaha Alliance has been able to present more French lectures and movies than usual. The French department is proud that it has been able to contribute so much to the intellectual and artistic life of the city.

Some of the special programs offered the members of the Junior Alliance were five French movies, six or seven lectures, and the weekly Alliance luncheons held at the Fontenelle hotel. The first movie, "Carnival in Flanders," with the lovely French comedienne, Francoise Rosay, was voted by the Academy of Motion Pictures the best foreign comedy of the year. This gave to Omaha students and lovers of French a rare opportunity to witness the finest in the French movie industry. Madame Suzanne Silvercruis, a Belgian sculptress, and Arthur Gibbons Bovee of the University of Chicago, were a few of the interesting speakers who addressed the group.

From the practical point of view, the department feels that these lectures in French have greatly helped the student in becoming familiar with the various accents and tone inflections.

The French choir, composed of thirty-five members of l'Alliance, met during the winter at the studio of the French consul, Mr. August Borglum, and became very proficient in singing the old world folk songs. The establishment of a French library in Room 339 is another activity of the club.

"La Grande Pomme" or the Big Apple was the name of the year's dance, and it was held on March 11. The club's president and only officer this year is Anabel Shotwell, and the sponsors are Miss Bess Bozell, Miss Ruth Pilling, Miss May Mahoney, and Mr. Webster Porter.



Lefitz, Hellermann, Beck, Nelson, Melum, Sturges, Kursawe, Griffith, Zimmerman, Sherman, Slabaugh
 Mynatt, Steffan, Alpersen, Acker, R. Miller, R. Stein, Bates, Hoeldobler, M. Slater, Mann
 Stewart, Brauch, Friedman, Brown, Carlburg, Priesman, M. Smith, M. Griffith, Stecher, Sinclair, Rice, Paulson,
 Firestone
 Hypse, Krimlofski, Beecroft, Fagan, Dudley, Miss Anderson, Findley, Bailey, Fee, Rivett, Morton

ROLLER SKATING CLUB

The Roller Skating club, which was organized in January, 1937, was started to encourage social gatherings among the students and to provide for a few well-supervised hours of recreation. The club has a business meeting once a month, and every other Friday evening, after school, it sponsors a roller skating party at the 40th and Farnam skating rink.

The club was organized at the suggestion of Bertram Else and Randall Nelson. Miss Dorothy Anderson, sponsor of the group, helped the two boys formulate the original plans. Loren Bailey and Randall Nelson were last year's president and secretary, respectively. The membership in this organization totals forty-seven.

Jack Fagan is this year's president and Loren Bailey, first vice president. The following are also vice presidents, each serving as chairman of some committee: Jayne Fee, publicity; Richard Krimlofski, courtesy; Clark Hypse, tickets; and Max Delrogh, entertainment. Marjorie Rivett is secretary, Jay Beecroft, treasurer; Emily Morton and Reva Mann, girl sergeants at arms, and Jack Dudley and Bob Findley, boy sergeants at arms.

The dues of the club are ten cents a year, but each member pays twenty cents per party. All guests are cordially invited to the parties, where various games, such as Omaha Steal, Bagdad, and Ladies' Choice, are played.

The club is open to members of the freshman, sophomore, junior, and senior classes alike, and all skating enthusiasts are welcome to join.



CENTRAL COMMITTEE

Low, Henderson, Nestor, Osborne, Buchanan, King
 Kopperud, P. Hoffman, Barish, Pratt, Stelzer, Helgren, Rose, Slosburg
 M. Buchanan, Frazee, Neely, Coyne, Boien, Clarke, Moore, K. Holman, S. Hoffman
 Traub, M. Holman, Wolf, Tunison, Griffin, Stuht, Myers, M. J. Kopperud



GREENWICH VILLAGERS

Brightman, Traub, Piper, Dimond, Carney, Smith, O'Neill, Piccolo, Lake, Maystrick
 Klein, Humpert, McIntosh, Metcalf, Griffith, Palmquist, Shapiro, Leeser, Batt
 Hill, Beck, Rogers, Dvorak, Smith, O'Harra, Rychly, Paeper, Berkowitz, Wyrick



Loomis, Castro, Kulesh, Koory, Freyman, Deal, J. Holland, Agee
 Friedman, Ireland, Carson, (not a member), Bremers, Grasso, Decker, Dunham
 Luken, Kulhaneck, Heimrod, Herzberg, Burton, Carlberg, Bahula, Carlton, Anderson, Kalmansohn
 London, Linda, Kaiser, Christie, Ensor, Katzman, Brown, Belmont, Hanson

LATIN CLUB

The Latin club was organized in January, 1930, by a group of enthusiastic freshmen who had presented a Latin play, "Medicus," at Central High and at North High, under the direction of Mrs. Bessie Rathbun. The original aim of the club was to familiarize students with spoken Latin. In accordance with this purpose, dramatic sketches have been written and presented yearly. At the annual banquet on February 23, "The Roman Wedding," an adaptation of a play by Miss Susan Paxson, and a Roman style show were presented.

Starting with about thirty members, the organization has more than tripled its number. Any person who has completed one year of Latin is eligible to the club. Mrs. Rathbun and Mrs. Bernice Engle are the faculty sponsors. Though the custom is to elect the officers each semester, only one group was chosen this shortened year: Jack Holland, president; Sylvia Katzman, vice president; Harriet Maxwell, secretary; David Carson, treasurer; Betty Brown, Frank Grasso, Harold Bremers, and Jean Christie, sergeants at arms. The officers selected for next year are president, Betty Brown; vice president, Jacqueline Woodhouse; secretary, Jean Marvin; treasurer, Oliver Deal; sergeants at arms, Robert Silverman, Janet Randall, Gerald Anderson, and Marjorie McIntyre.

A lecture by an outside professor is an annual feature of the programs. Professor Wirth of Creighton University spoke, December 14, on the subject of "Augustus." Last year's lecturer was Professor Spencer of Grinnell, whose topic was "Stones Used in the Decoration and Construction of Ancient Rome." Other activities of the club have been the sponsorship of the Latin department paper "Loquax" and the presentation of the marionette shows, "The Three Bears" and "Punch and Judy."



LATIN CLUB

Simon, Tirro, Swoboda, Mercer, Randall, Rice, Merritt, Petersen, Soiref
 Slater, Traub, McIntyre, Martin, Silverman, Woodhouse, Yale, Marvin, Marchant
 Pheelan, Maxwell, Wilkinson, Tatelman, Waldron, Sargent, Pegler, Pratzman



SPANISH CLUB

Godden, Berman, Schwartz, Singer, Herdzina, Raznick, Altsular
 Crouse, Fox, Clark, Weise, Carter, Baum, Landstrom
 Nesselson, Maisel, Hein, Anderson, Hertzberg, Klein



COLLEENS

Stepanek, Slater, Kulhanek, Heimrod, Jensen, Sargent, Griffith, Hinricks, Holkstra, Barnett, Kursawe, Paulsen,
 Bates, Harris, Brightman
 McCampbell, Palmquist, Herzberg, Keller, Bruhn, Shaughnessy, Sellers, Rothkop, Rice, Gaden, Walton,
 Newbranch, Hawkins, London
 Shurtz, Crouse, Katz, Wohlner, Thompson, Rosenstock, Marvin, Morris, Hascall, Kopperud, Tatelman,
 Bergman, Dohse, Buzbee, Epstein, Carter
 Soukup, Burke, S. Noble, Bliss, Maddox, M. Noble, Paeper, Carson, Williams, Clark, Lynch, Short, Piper,
 Nordstrom, Swarr



COLLEENS

Nelson, Kickinson, Larson, Armintraut, McCague, Johnson, Scott, Walton, Teale, Menning, Epstein
 Epstein, Rimmerman, Christie, Christie, Tetard, Burton, Pommerenk, Woodbridge, Miller, Lefitz, Lerner
 Goldstein, Castro, Orso, Colomba, Greenspan, Dansky, Fiedler, Leeser, Mirowitz, Wiggins, Bernstein
 Linda, Nielsen, Harberg, Burns, Lagman, Traub, Stockman, Soiref, Harden, Reed, Beasley, Guenther



COLLEENS

Satrapa, Leffler, Scott, Dawson, Katzman, Rothschild, Carlberg, Travers, Eloise Carney, Elaine Carney,
 Rosenstock, Fox, Rychly, Milder
 McDonald, Maxwell, Thorndike, Gaden, Boien, A. White, Boukal, Beck, Finlayson, Baum, Fee, Rottnez,
 Wolfson, Brown
 Foster, Ensor, Carter, Feeken, Wiese, McQuade, Westering, Greenberg, Lahr, Lee, Friedel, Piper, Myers,
 Friedman, McMartin, Kirkpatrick
 Shields, Borton, A. Firestone, Brauch, F. Firestone, V. White, Mallo, Kulakofsky, Civin, Greenberg, Meyer,
 Rosenblum, Rosen, Wright, Saylan



COLLEENS

Kozial, Newman, Somberg, Loomis, Anderson, Sinclair, Anderson, Raapke, Myers, Beerman, Knott
 Thomas, Sklar, Thornton, McKenna, Wrenn, Davis, Hanford, Lindevall, Meiches, Stecher, Storie, Nelson, Seabury
 Macchietto, Bordy, Raduziner, Fox, McNutt, Larese, Johnson, Fishberg, Finer, Enos
 Robinson, Cooperman, Willmarth, Smails, Fingeret, Rychly, Bates, Geifman, Slaterry, Satrapa, Harrison



GERMAN CLUB

A. Pommerenk, Steffan, Frohardt, Bailey, Krimlofsky, Sahn, Acker, Frohman, Clapper, Kuppinger, Hartman, Jensen, Myers, Randall, Miller, Yohe, Thorup, Anderson, Jurgens, Hellermann, D. Willrodt, Glasshof, R. Willrodt, Koehler, Pommerenk, Nothnagel, West, Keller, Kursawe, Rice, Rivett, Tunison



TITIANS

Davis, Vermillion, Lupo, Williams, Whetstone, Emery, Tyler, Morris, Bergman, Mott, Slater, Odoriso, Stave, Carlberg, Smith, Lierk, Hamilton, Cherniss, Vogel, McCaffrey, Brandt, A. Smith, Fingeret, Geifman, Robinson, Jensen, Burke, O'Neill, Combs, Rosenthal



GIRL RESERVES

Salanitro, Graves, H. Plechas, Calvert, Larsen, Petersen, J. Plechas, Wenninghoff, Quinze, Hanson, Caniglia
 Souder, McMahon, Lupo, Parise, Narducci, Gemma, Manganaro, Minarik, Longo, Paletto
 Wrenn, Wiesman, Meredith, Moore, Singleton, Speck, Pearson, Loss, Morton, Enos
 Sloboth, Brandt, Bakewell, Brauch, Davis, Ellison, Tauchen, Johnson, Poole, Harris, Gogola



PROJECT COMMITTEE

Nesselson, Tannenbaum, Krimlofsky, Randall, Hanford, Weisman, Chamberlain, Grossman
 Kulhanek, Rimerman, Marvin, Woodhouse, Clark, Caniglia, Whetstone, Brown
 Ruma, Anderson, Crowley, Piper, Hascall, Morton, White, Greenspan



Printing — DOUGLAS PRINTING COMPANY
Engraving — BAKER ENGRAVING COMPANY
Plastic Binding (U. S. Patent No. 1970285)
TRADE RULING COMPANY